

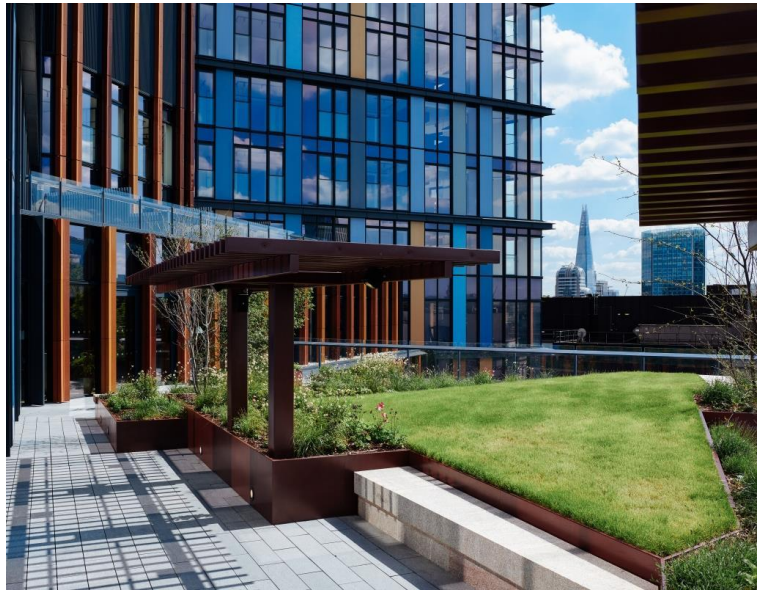
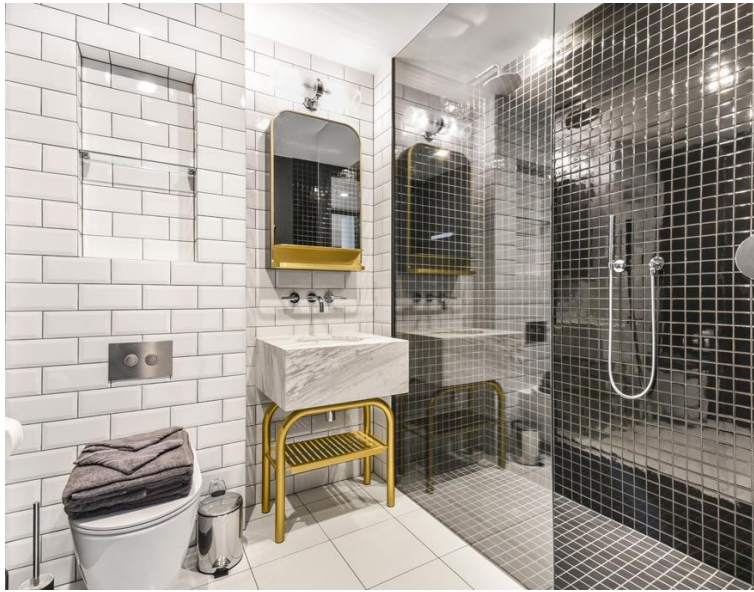


Sun Street, London EC2A

Price £795 per week - Furnished







Description

A stunning 1 bedroom apartment in the sought after and iconic One Crown Place, EC2, situated in the City of London.

This luxury 1 bedroom apartment is situated on the 13th floor and a reception room with winter garden offering an Easterly aspect, fully fitted kitchen, double bedroom with large fitted wardrobes and oak herringbone flooring.

One Crown boasts a fantastic location, a stone's throw from Liverpool Street Station (approximately 0.3 miles) and Moorgate Station (approximately 0.3 miles). The development has a high specification with comfort cooling and benefits from fantastic on site amenities which include 24 hour concierge residents' lounge, screening room, workhub, gym, private dining room, treatment room and communal terrace.

As well as paying the rent, you may also be required to make some additional permitted payments. If your tenancy does not qualify as an AST, additional fees may apply. Please visit jll.co.uk/fees for details of fees which may be payable when renting a property.

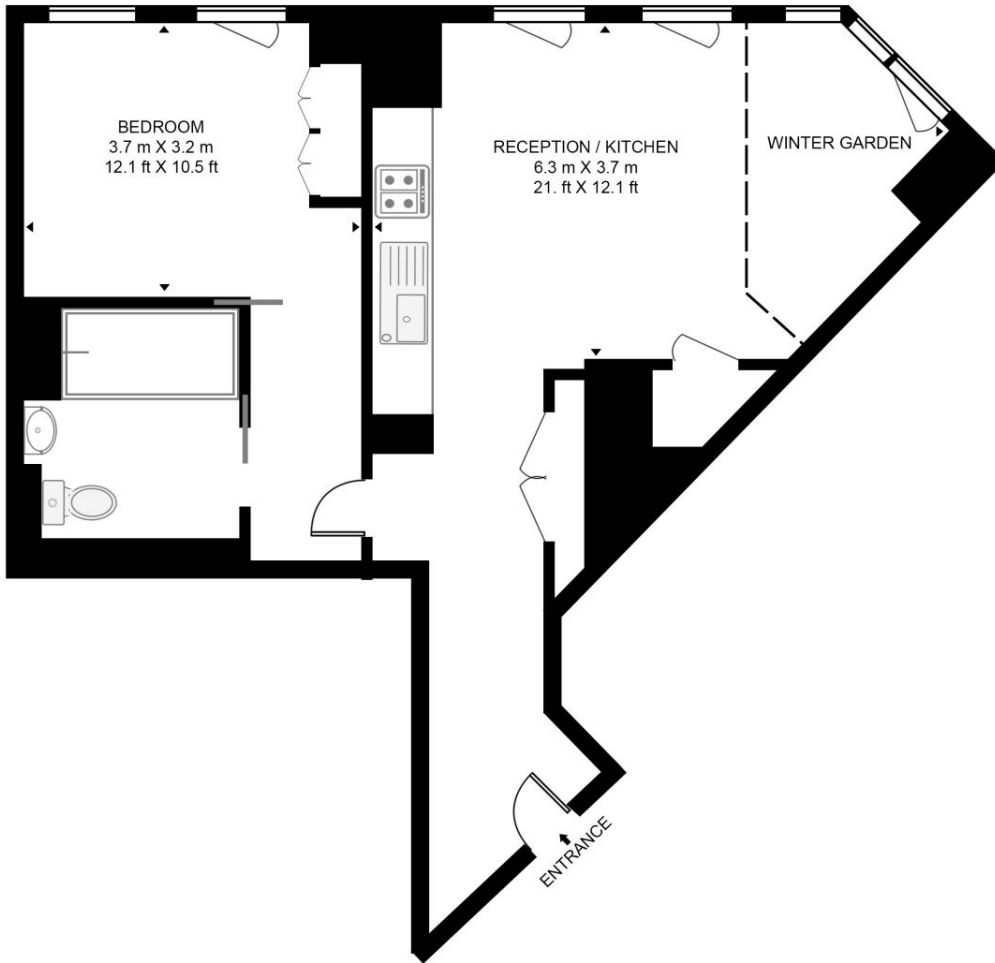
- 1 Bedroom
- 1 Bathroom
- 13th Floor
- Winter Garden
- 24 hour concierge
- On-site leisure facilities including gym, resident's lounge and screening room
- 0.3 miles from Liverpool Street Station
- Approx. 616 sq ft (57.2 sq m)
- Furnished
- EPC: B

Floorplan

616 sq ft | 57 sq m

ONE CROWN PLACE, 19 SUN STREET

APPROXIMATE GROSS INTERNAL FLOOR AREA 616 SQ.FT (57.2 SQ.M)



THIRTEENTH FLOOR

HDVA

This floor plan has been defined by the RICS Code of Measurement. This floor plan and all others are for approximate representative purposes only and upon usage is agreed to as such by the client.

WWW: hdvirtualart.com | TEL: 0203.974.1567 | EMAIL: info@hdvirtualart.com

City
25 Walbrook The Walbrook
Building,
London EC4N 8AF
+4420 7337 4000

Urban living, your way.

jll.co.uk/residential

© 2019 Jones Lang LaSalle IP, Inc. All rights reserved. All information contained herein is from sources deemed reliable; however, no representation or warranty is made to the accuracy thereof.

