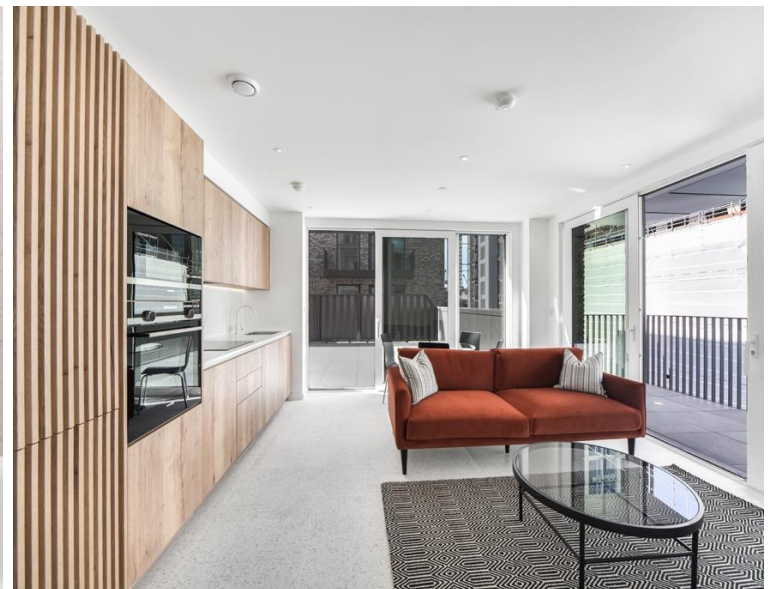
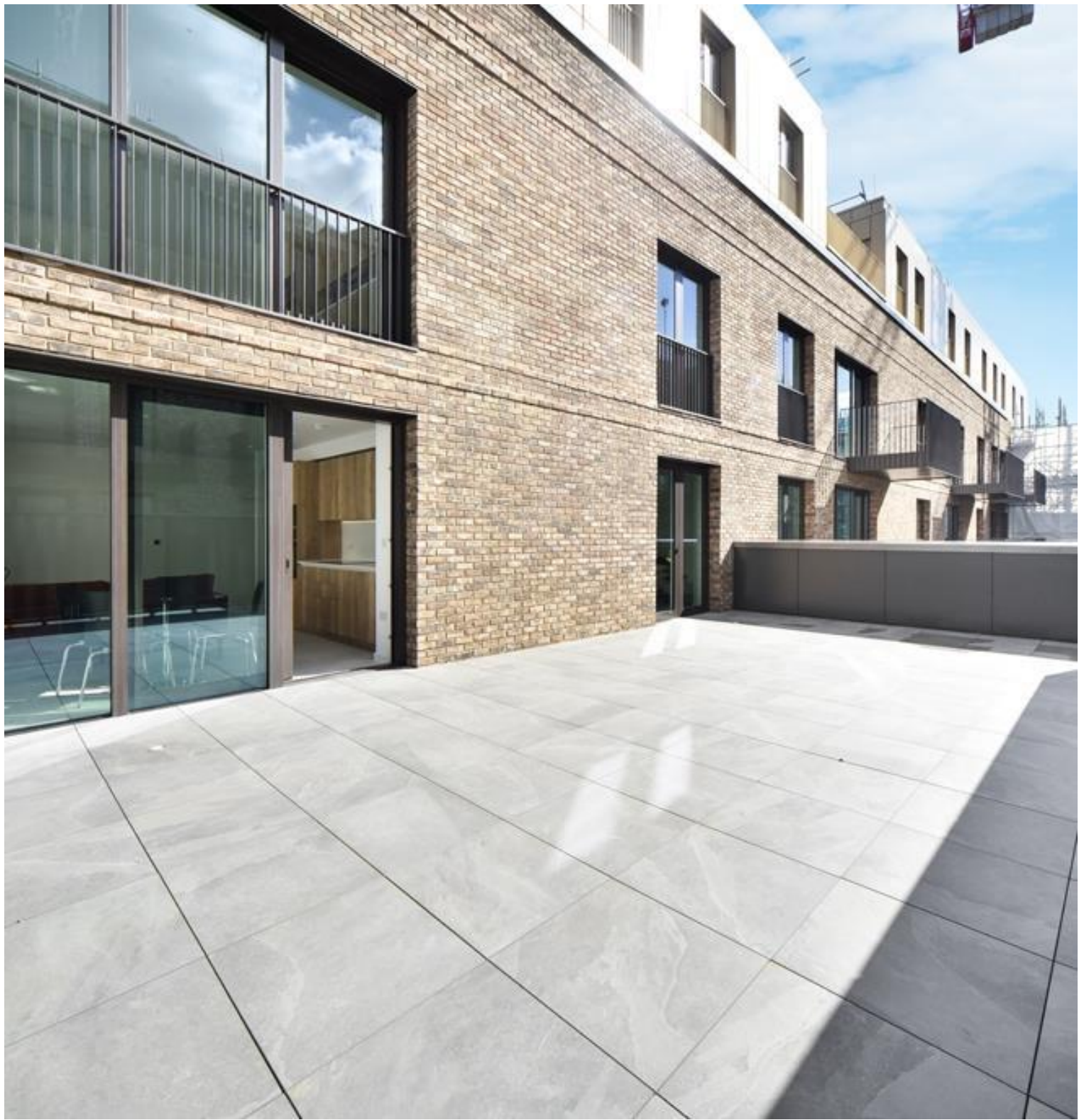




Sidney Street, London E1

Price £555 per week - Furnished







Description

A stunning 1 bedroom apartment with amazing outside terrace space, available within Georgette Apartments, the Silk District, which boasts fantastic amenities with 24 hour concierge, on site gym, cinema room resident's lounge and rooftop gardens.

Situated on the 4th floor, this well presented 1 bedroom apartment is offered fully furnished and comprises an open plan living / dining area, capacious private terrace area plus additional balcony, double bedroom with large fitted wardrobes, luxury bathroom, fully fitted kitchen with Oak effect finish, tiled flooring and excellent storage space.

The Silk District is a development from Mount Anvil and offers residents fantastic amenities which include 24 hour concierge, on site gym, cinema room, rooftop gardens and resident's lounge. The development is within easy reach of the City of London and in the heart of the Whitechapel regeneration area, approximately 0.3 miles from Whitechapel Underground / Crossrail station.

As well as paying the rent, you may also be required to make some additional permitted payments. If your tenancy does not qualify as an AST, additional fees may apply.

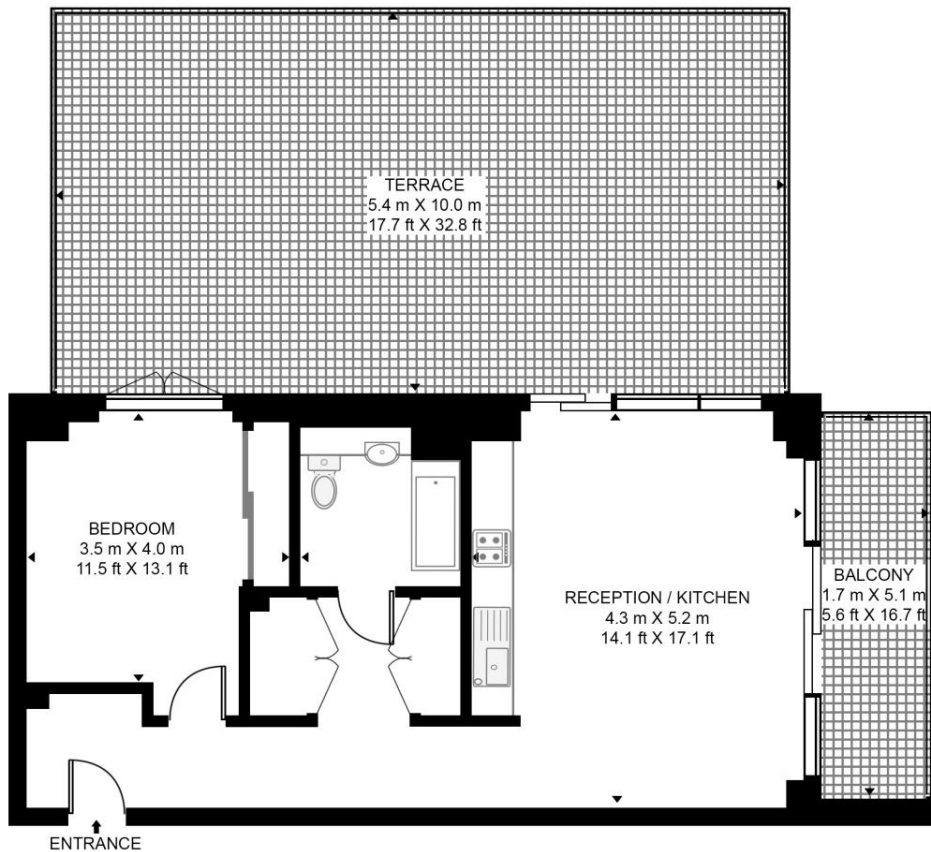
- 1 Bedroom
- 1 Bathroom
- 4th Floor
- Private Terrace plus additional Balcony
- On-site amenities including cinema, gym and resident's lounge
- 24 hour concierge
- 0.3 miles from Whitechapel Station
- Approx. 565 sq ft (52.5 sq m)
- Furnished
- EPC: B

Floorplan

565 sq ft | 53 sq m

GEORGETTE APARTMENTS, SILK DISTRICT

APPROXIMATE GROSS INTERNAL FLOOR AREA 565 SQ.FT (52.5 SQ.M)



HDVA

This floor plan has been defined by the RICS Code of Measurement. This floor plan and all others are for approximate representative purposes only and upon usage is agreed to as such by the client.

WWW: hdvirtualart.com | TEL: 0203.974.1567 | EMAIL: info@hdvirtualart.com

City
25 Walbrook The Walbrook
Building,
London EC4N 8AF
+4420 7337 4000

Urban living, your way.

jll.co.uk/residential

© 2019 Jones Lang LaSalle IP, Inc. All rights reserved. All information contained herein is from sources deemed reliable; however, no representation or warranty is made to the accuracy thereof.

