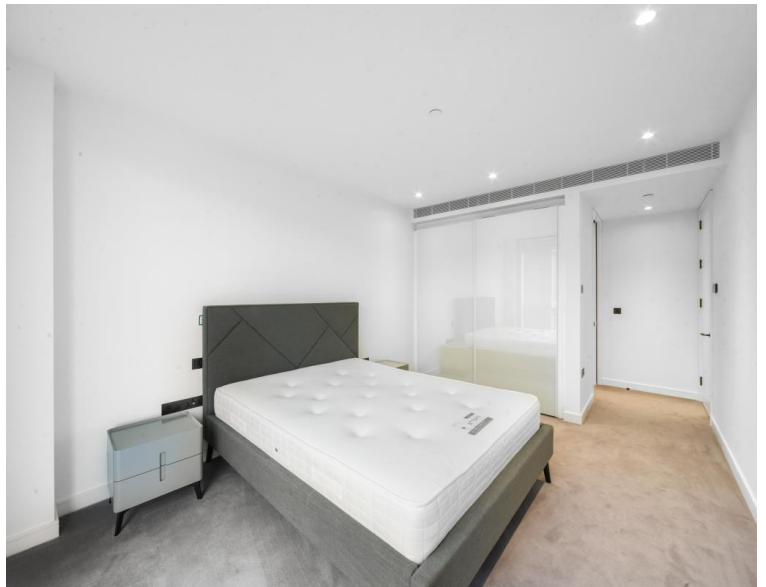
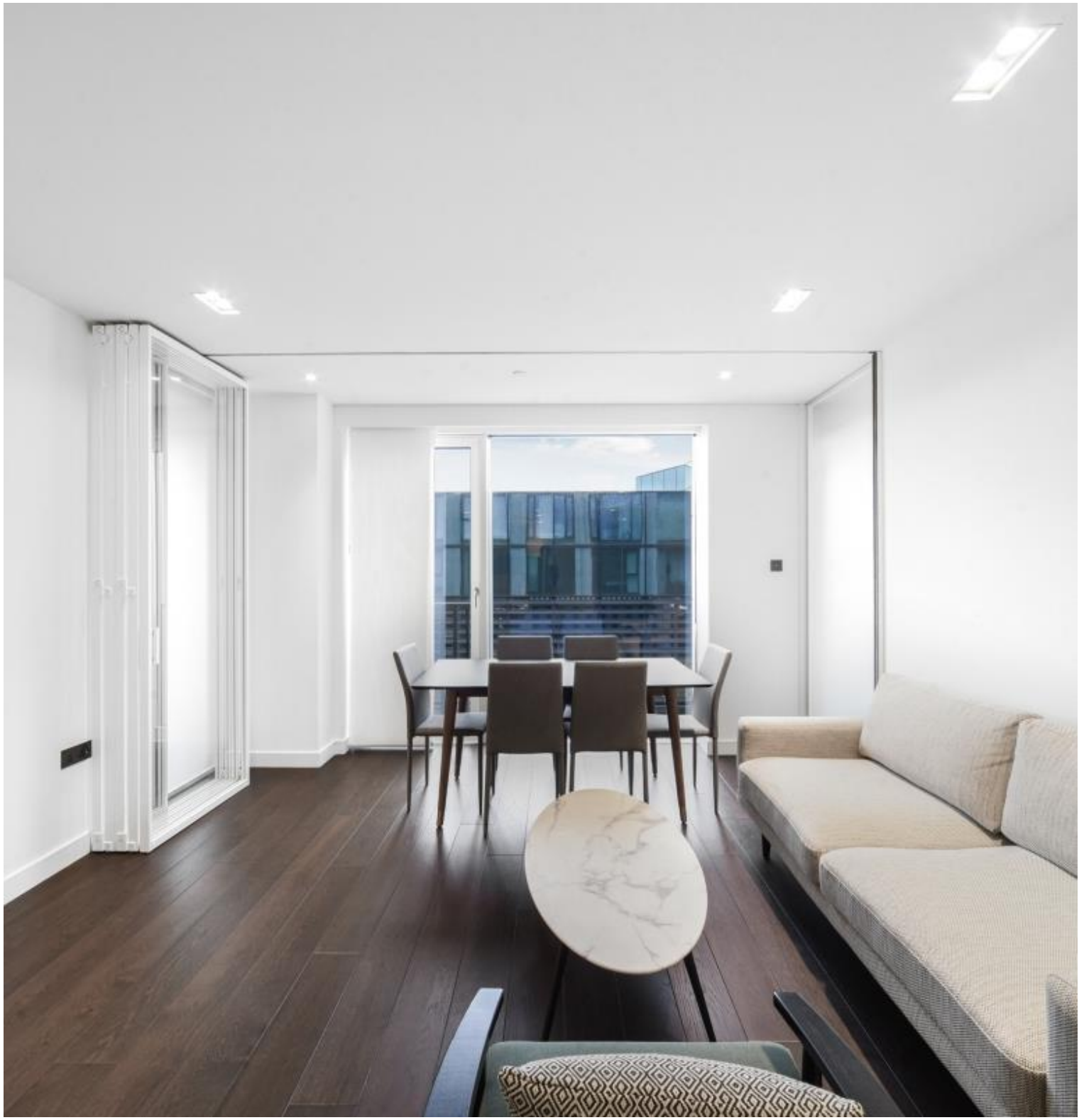


Casson Square, London SE1

Price £1,225 per week - Furnished







Description

A 21st floor 2 bedroom apartment in the sought after 8 Casson Square, a luxury development moments from Waterloo Station, SE1.

This double aspect 2 bedroom apartment is situated on the 21st floor and boasts stunning South / Eastern views towards The Shard. The apartment comprises 2 double bedrooms with large fitted wardrobes to each, living area with a fully fitted open plan kitchen to include Miele and Siemens appliances, winter garden with stunning views, wood flooring and excellent storage space. The property has a high specification throughout featuring comfort cooling, underfloor heating and smart home technology.

The development benefits from top of the range amenities which include an on-site gym, swimming pool with spa, exclusive resident's lounge and 24-hour concierge. 8 Casson Square is in the heart of Southbank and on the doorstep of Waterloo Station (0.2 miles) and moments from the iconic London Eye. The City of London is within easy reach as is London's famous West End.

We understand that cooling / heating is delivered via a communal system for which separate charges apply.

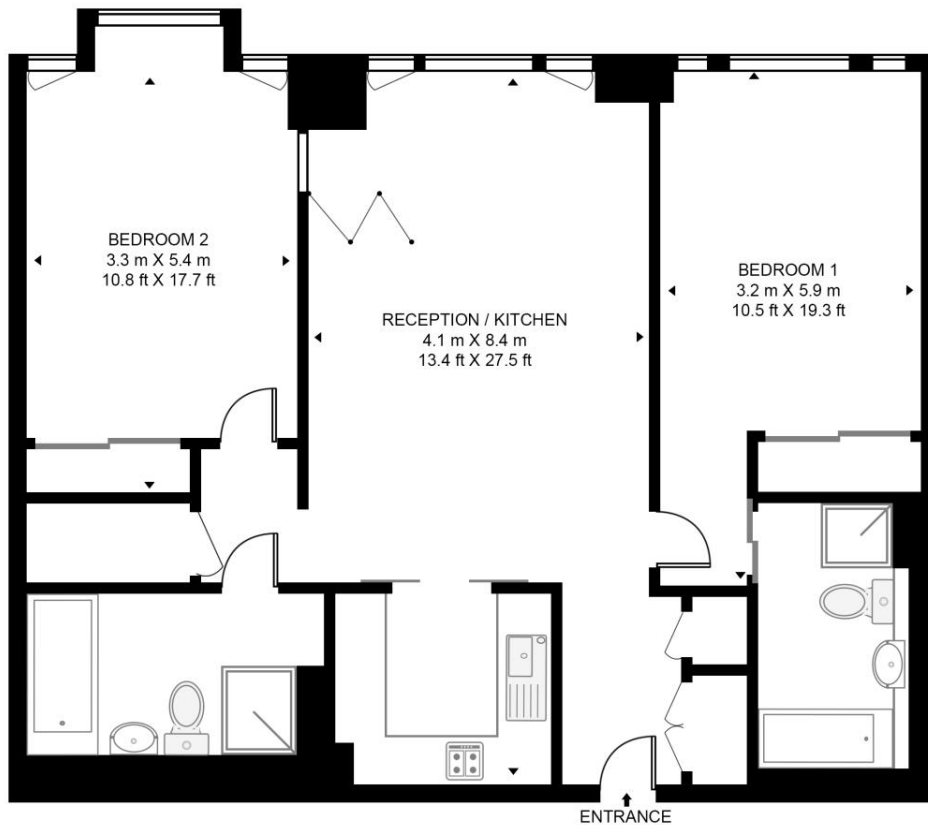
- 2 Bedrooms
- 2 Bathrooms
- 21st floor
- Winter garden with views towards The Shard
- Underfloor heating
- Furnished
- 24 hour concierge
- On-site leisure facilities including spa, cinema and gym
- 0.2 miles from Waterloo Station
- Approx. 957 sq ft (88.9 sq m)

Floorplan

957 sq ft | 89 sq m

CASSON SQUARE

APPROXIMATE GROSS INTERNAL FLOOR AREA 957 SQ.FT (88.9 SQ.M)



TWENTY FIRST FLOOR



This floor plan has been defined by the RICS Code of Measurement. This floor plan and all others are for approximate representative purposes only and upon usage is agreed to as such by the client.
WWW: hdvirtualart.com | TEL: 0203.974.1567 | EMAIL: info@hdvirtualart.com

City
25 Walbrook The Walbrook
Building,
London EC4N 8AF
+4420 7337 4000

Urban living, your way.

jll.co.uk/residential

© 2019 Jones Lang LaSalle IP, Inc. All rights reserved. All information contained herein is from sources deemed reliable; however, no representation or warranty is made to the accuracy thereof.

