



# Tapestry Way, London E1

Price £565 per week - Furnished









## Description

A stunning one bedroom within Jacquard Point, the Silk District, E1.

This luxury one bedroom apartment offers great living space and is offered fully furnished. The apartment comprises an open plan living room and integrated kitchen, separate sleeping area with large fitted wardrobes, bathroom with porcelain finish, tiled flooring throughout and good storage space.

The Silk District is a development from Mount Anvil and offers its residents fantastic amenities which include 24 hour concierge, on site gym, cinema room, rooftop gardens and resident's lounge. The development is within easy reach of the City of London and in the heart of the Whitechapel regeneration area, approximately 0.3 miles from Whitechapel Underground / Crossrail station.

We understand that cooling / heating is delivered via a communal system for which separate charges apply.

Rent is payable on a monthly basis and you may be required to pay more than a month's rent in advance, depending on your circumstances. You will be required to pay a 1 week holding deposit following a successful offer. Utility bills, council tax, tele

- 1 Bedroom
- 1 Bathroom
- 6th Floor
- Balcony
- Open-plan living space
- 24 hour concierge
- On-site gym, cinema room and resident's lounge
- 0.2 miles to Whitechapel Station
- Approx. 555 sq ft (51.6 sq m)
- Furnished

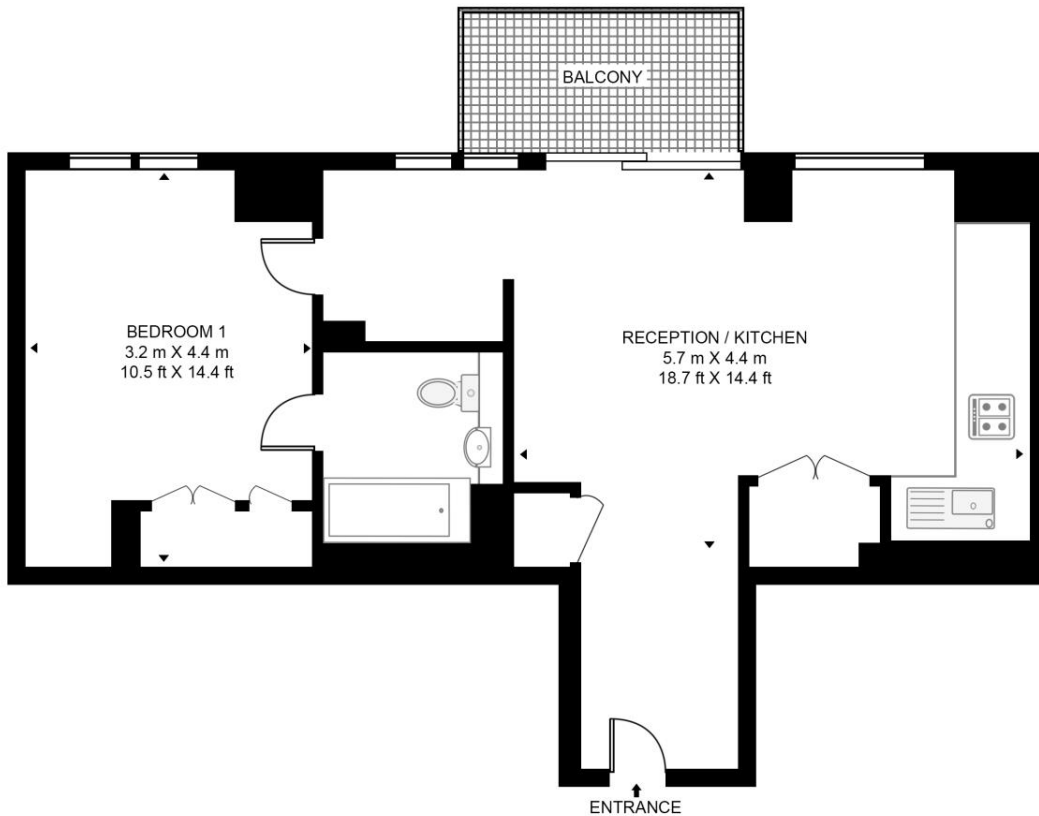


# Floorplan

555 sq ft | 52 sq m

## JACQUARD POINT, THE SILK DISTRICT

APPROXIMATE GROSS INTERNAL FLOOR AREA 555 SQ.FT (51.6 SQ.M)



SIXTH FLOOR



This floor plan has been defined by the RICS Code of Measurement. This floor plan and all others are for approximate representative purposes only and upon usage is agreed to as such by the client.  
WWW: [hdvirtualart.com](http://hdvirtualart.com) | TEL: 0203.974.1567 | EMAIL: [info@hdvirtualart.com](mailto:info@hdvirtualart.com)

City  
25 Walbrook The Walbrook  
Building,  
London EC4N 8AF  
+4420 7337 4000

*Urban living, your way.*

[jll.co.uk/residential](http://jll.co.uk/residential)

© 2019 Jones Lang LaSalle IP, Inc. All rights reserved. All information contained herein is from sources deemed reliable; however, no representation or warranty is made to the accuracy thereof.

