



VIRTUALLY STAGED IMAGE



VIRTUALLY STAGED IMAGE

9 Millbank, London SW1P

Price £1,600 per week - Furnished, Part
Furnished







Description

This two-bedroom apartment has been finished to the highest of specifications and furnished beautifully throughout. There is a spacious open-plan living space with a luxury Kitchen with integrated Küppersbusch appliances which opens onto the large private terrace spanning the length of the apartment. The principal bedroom has built in wardrobes and elegant bathroom suite with rainfall shower. There is a further double bedroom and separate shower room and both bedrooms has direct access to the terrace. The apartment further benefits from engineered timber flooring, comfort cooling and underfloor heating throughout.

Milbank Quarter provides residents with the highest quality leisure facilities, including a 24-hour concierge, a state-of-the-art gym, luxurious swimming pool with spa and treatment room, private cinema screening room, meeting rooms.

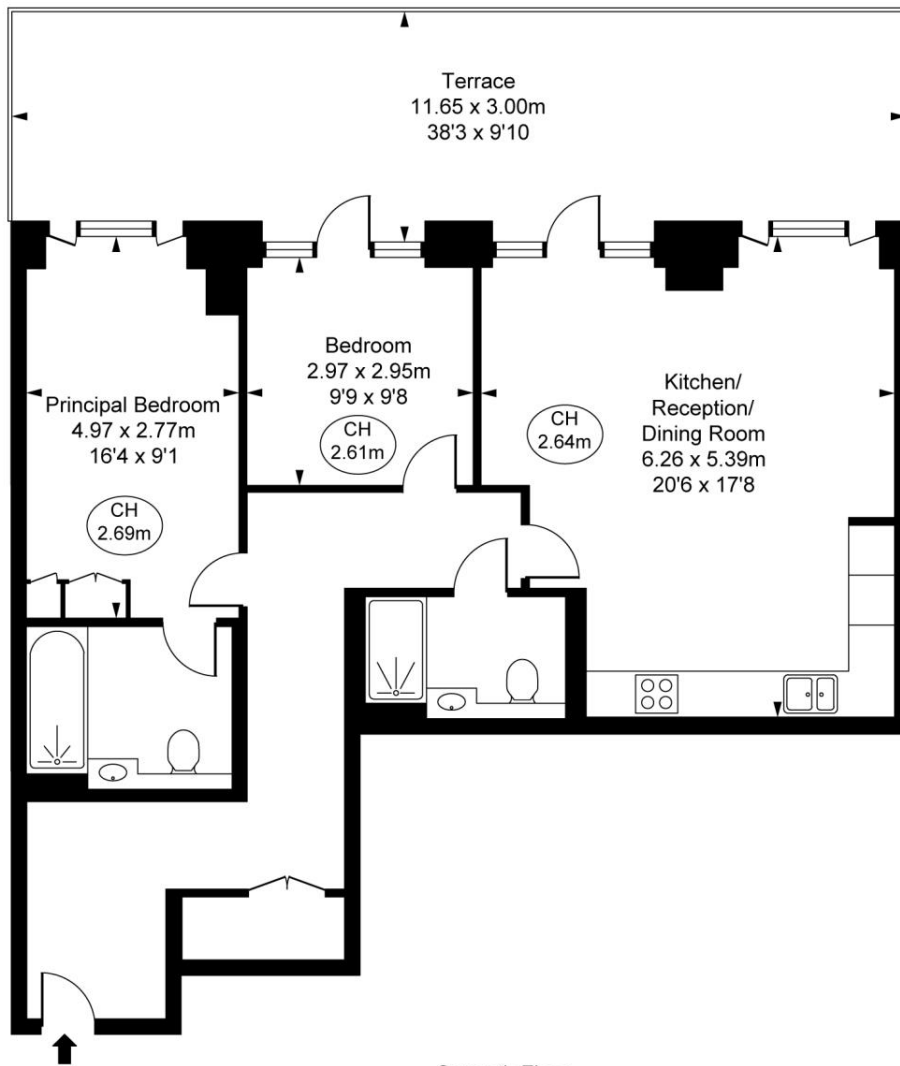
Living in Westminster also puts you within walking distance of three Royal Parks, upscale shopping at Knightsbridge, Mayfair's Michelin-starred restaurants and the theatres of the West End. Millbank itself is a world-renowned centre of art, home of the Tate Britain gallery and Chelsea College of Art and Design. Nearby educational institutions include the historic Westminster School and Francis Holland School, Imperial College

- Luxury Development
- 24hr Concierge Service
- Large Terrace
- Open-plan Reception Room
- Two Bedrooms
- Residents Gym
- Swimming pool
- Spa
- Screening Room
- Furnished

Floorplan

891 sq ft | 83 sq m

Millbank, SW1P
Approximate Gross Internal Area
82.78 sq m / 891 sq ft
(CH = Ceiling Heights)



Seventh Floor

This plan is not to scale. It is for guidance and not for valuation purposes.
All measurements and areas are approximate only, and have been prepared in accordance with the current edition of the RICS Code of Measuring Practice.
© Fulham Performance

Mayfair and Marylebone
13a St George Street,
London W1S 2FQ
+44 207 399 5550
mayfair@jll.com

Urban living, your way.

jll.co.uk/residential

© 2019 Jones Lang LaSalle IP, Inc. All rights reserved. All information contained herein is from sources deemed reliable; however, no representation or warranty is made to the accuracy thereof.

