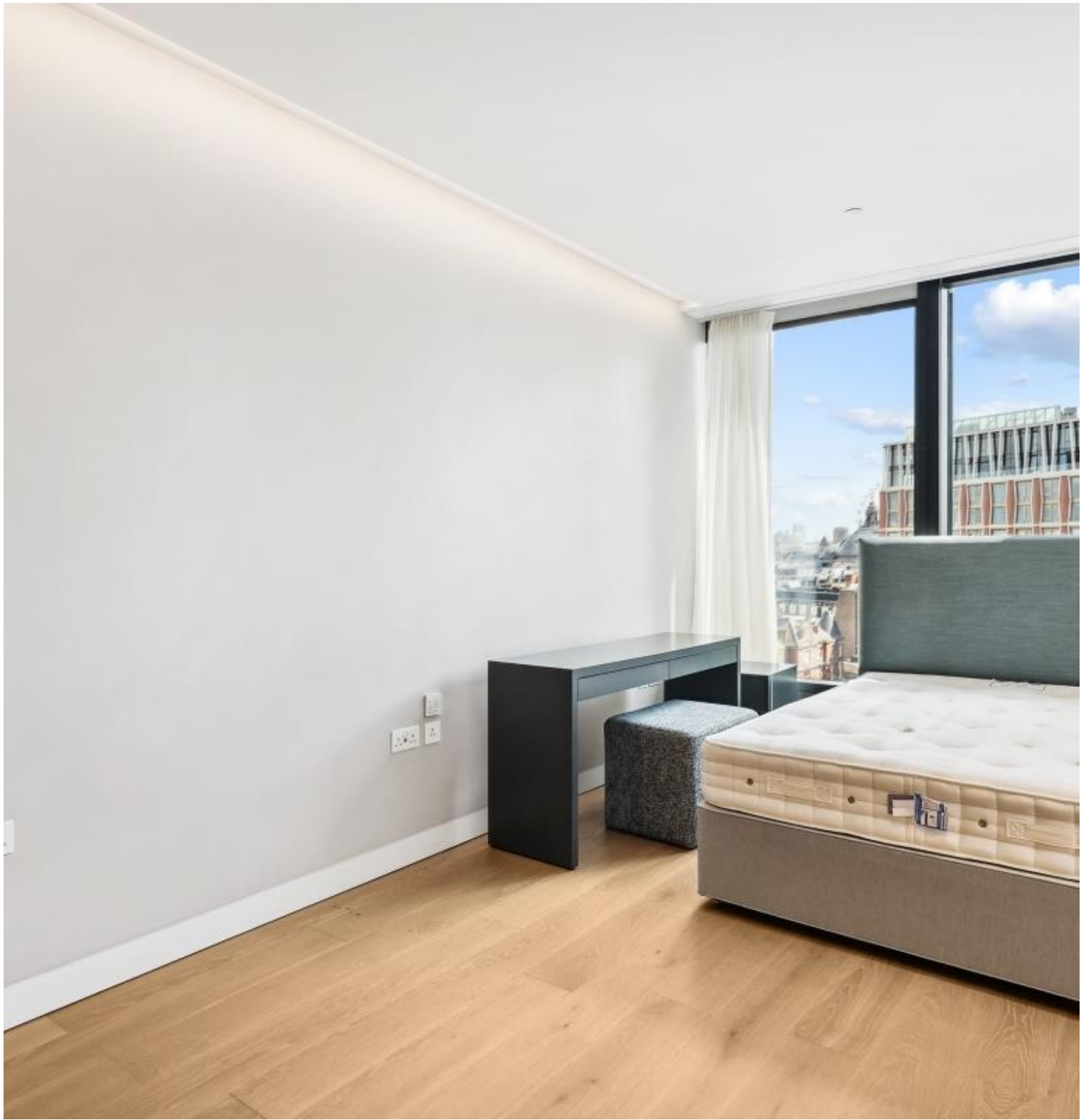
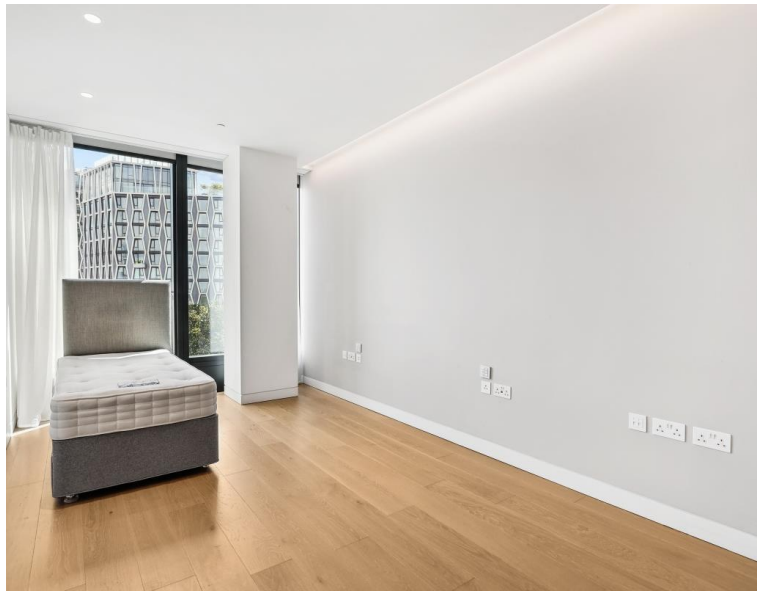


Buckingham Gate, London SW1E

Price £1,300 per week - Furnished







Description

A beautifully presented ninth floor apartment which has been interior designed throughout by TH2 Designs with spectacular easterly views towards the river and the City of London.

Accommodation comprises of two double bedrooms, one ensuite shower room, one guest bathroom, Fully fitted kitchen with seating area adjoining a stylishly decorated reception. Fittings throughout include wood floors and marble back drops with floor to ceiling glass windows providing natural light and city views.

Rent is payable on a monthly basis and you may be required to pay more than a month's rent in advance, depending on your circumstances. You will be required to pay a 1 week holding deposit following a successful offer. Utility bills, council tax, telephone line and broadband are not included in the rent. As well as paying the rent, you may also be required to make some additional permitted payments. If your tenancy does not qualify as an AST, additional fees may apply. Please visit jll.co.uk/fees for details of fees which may be payable when renting a property.

- Master bedroom with en suite shower room
- Second double bedroom
- 1 Further bathroom
- Reception room
- Open plan kitchen
- Ninth floor
- Lift
- 24 hour concierge
- Furnished
- Approx. 944 sq ft (87 sq m)

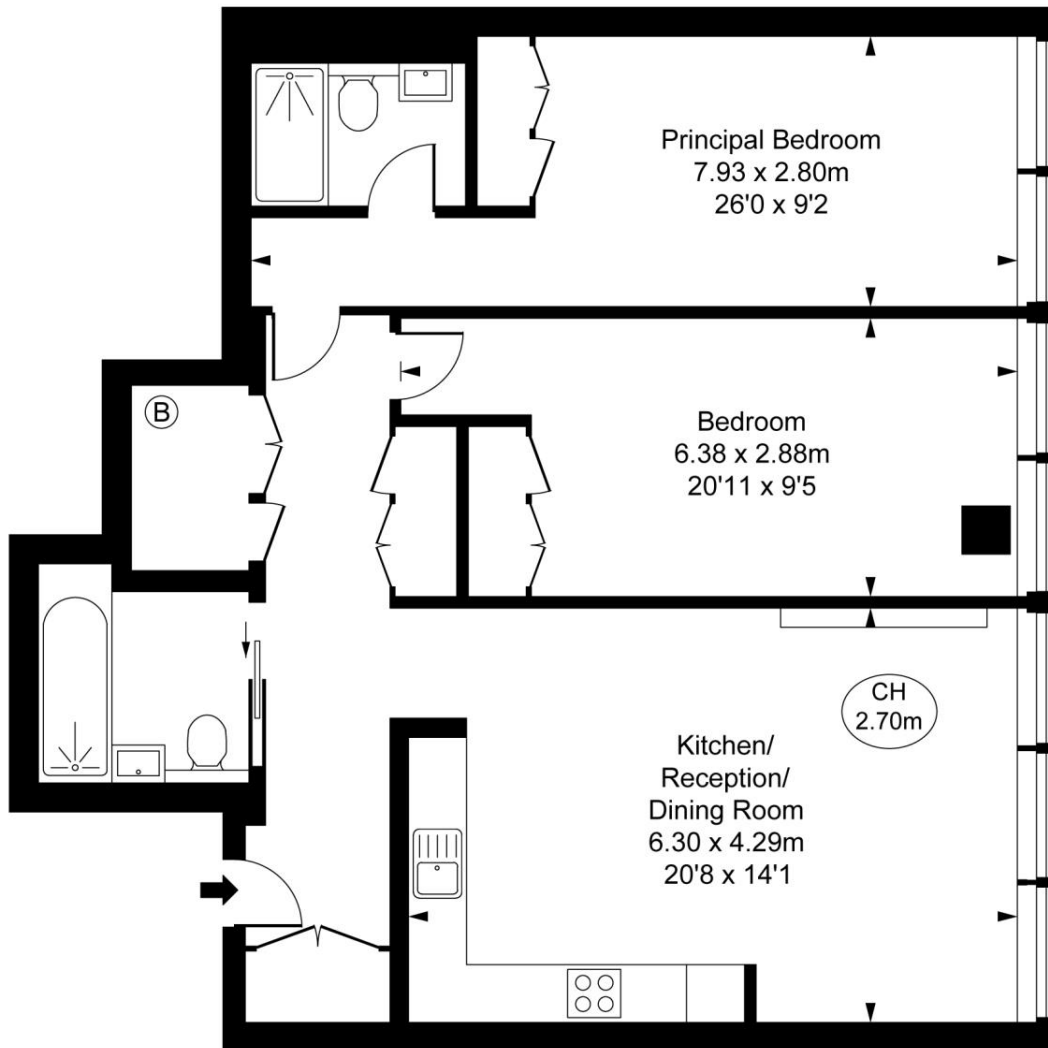
Floorplan

944 sq ft | 88 sq m

The Tower, Buckingham Gate, SW1E

Approximate Gross Internal Area
87.73 sq m / 944 sq ft

(CH = Ceiling Heights)



Ninth Floor

This plan is not to scale. It is for guidance and not for valuation purposes.
All measurements and areas are approximate only, and have been prepared in accordance with the current edition of the RICS Code of Measuring Practice.
© Fulham Performance

Knightsbridge
Wood Wharf,
London E14 5GX
+4420 7306 1600
lettingsknightsbridge@eu.jll.co

Urban living, your way.

jll.co.uk/residential

© 2019 Jones Lang LaSalle IP, Inc. All rights reserved. All information contained herein is from sources deemed reliable; however, no representation or warranty is made to the accuracy thereof.

