



Empire Square, London SE1

Price £510 per week - Furnished







Description

A well presented 1 bedroom apartment in Empire Square West, situated close to Borough Station, zone 1.

Situated on the 7th floor, this east facing aspect 1 bedroom apartment offers views towards The Shard and comprises of a spacious reception area with fully fitted kitchen, large bedroom, contemporary bathroom, wood flooring and good storage.

Residents of Empire Square benefit from a 24 hour concierge and the development is located moments from Borough Station (approx. 0.2 miles), zone 1.

Rent is payable on a monthly basis and you may be required to pay more than a month's rent in advance, depending on your circumstances. You will be required to pay a 1 week holding deposit following a successful offer. Utility bills, council tax, telephone line and broadband are not included in the rent. As well as paying the rent, you may also be required to make some additional permitted payments. If your tenancy does not qualify as an AST, additional fees may apply. Please visit jll.co.uk/fees for details of fees which may be payable when renting a property.

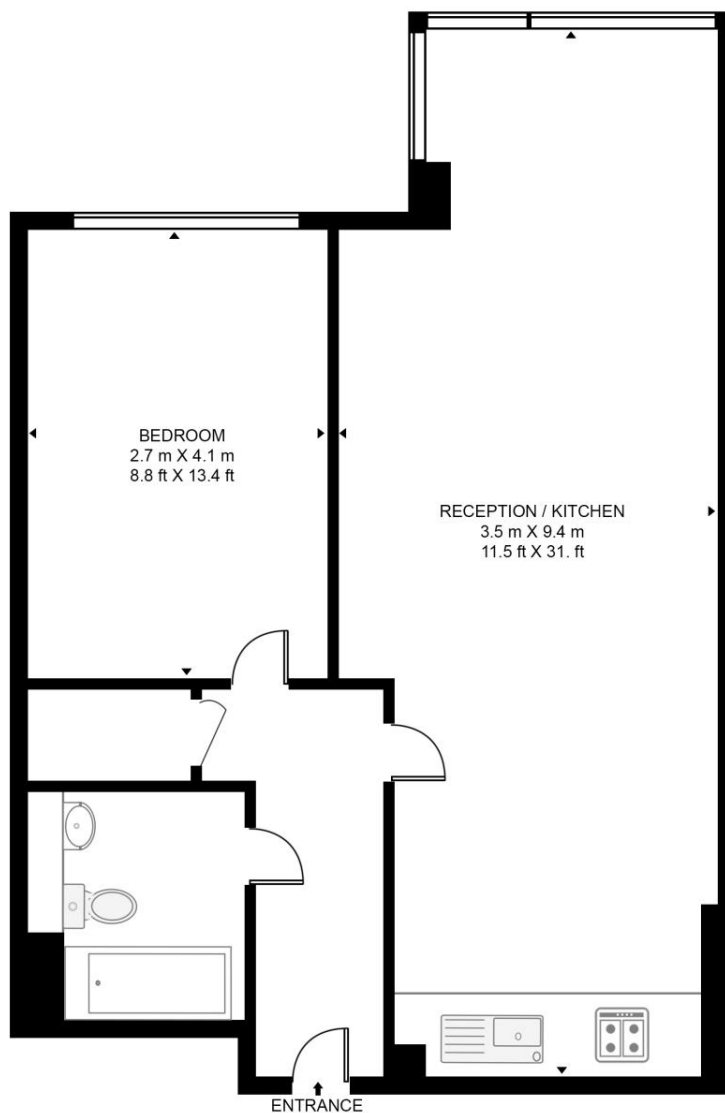
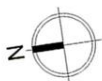
- 1 Bedroom
- 1 Bathroom
- 7th Floor
- Large open plan kitchen / reception
- Stunning Easterly views towards The Shard
- 24 hour concierge
- 0.3 miles from Borough Station
- Approx. 563 sq ft (52.3 sq m)
- Leasehold
- EPC: B

Floorplan

563 sq ft | 52 sq m

EMPIRE SQUARE WEST, EMPIRE SQUARE

APPROXIMATE GROSS INTERNAL FLOOR AREA 563 SQ.FT (52.3 SQ.M)



SEVENTH FLOOR



This floor plan has been defined by the RICS Code of Measurement. This floor plan and all others are for approximate representative purposes only and upon usage is agreed to as such by the client.

WWW: hdvirtualart.com | TEL: 0203.974.1567 | EMAIL: info@hdvirtualart.com

City
25 Walbrook The Walbrook
Building,
London EC4N 8AF
+4420 7337 4000

Urban living, your way.

jll.co.uk/residential

© 2019 Jones Lang LaSalle IP, Inc. All rights reserved. All information contained herein is from sources deemed reliable; however, no representation or warranty is made to the accuracy thereof.

