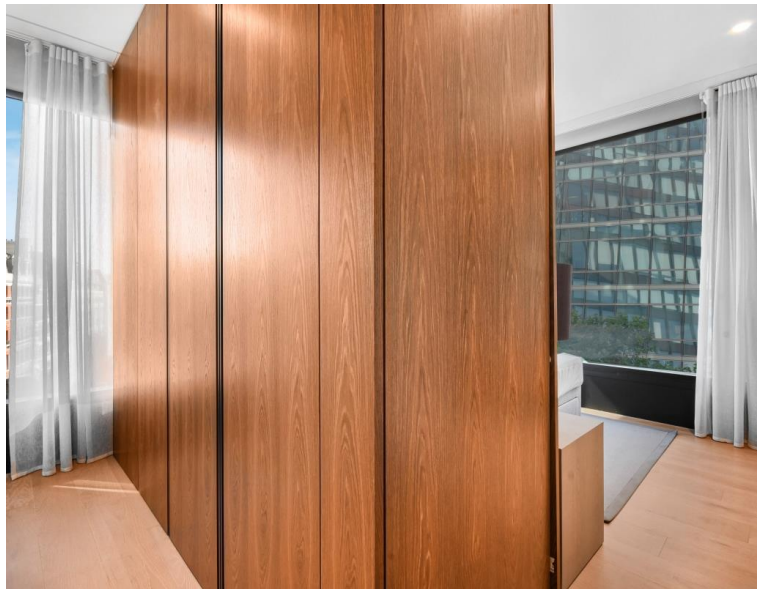




Buckingham Gate, London SW1E

Price £925 per week - Furnished







Description

A beautifully presented fifth floor apartment which has been interior designed by TH2 Designs and offers spectacular south westerly views towards the river and the City of London. Accommodation comprises one double bedroom, one bathroom, a fully fitted kitchen with seating area adjoining a stylishly decorated reception. Further benefits include wooden flooring and marble back drops with floor to ceiling glass windows providing natural light and city views. Underground parking is available by separate negotiation.

Please note that due to building works in the area, the skyline views from the apartments may have changed from those shown in the marketing pictures.

As well as paying the rent, you may also be required to make some additional permitted payments. Please visit jll.co.uk/fees for details of fees which may be payable when renting a property. If your tenancy does not qualify as an AST, additional fees may apply.

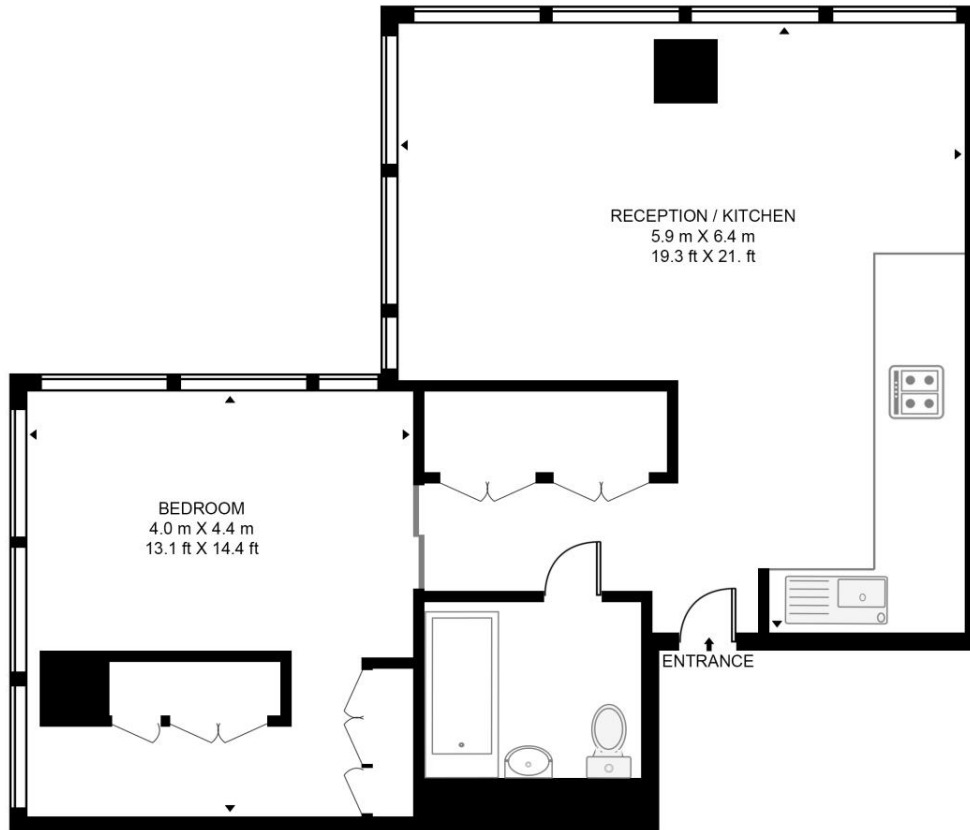
- 1 Double bedroom
- 1 Bathroom
- Reception room
- Open plan kitchen
- Fifth floor
- Lift
- 24 Hour concierge
- Parking by negotiation
- Approx. 657 sq ft (61 sq m)
- Furnished

Floorplan

sq ft | sq m

THE TOWER, BUCKINGHAM GREEN

APPROXIMATE GROSS INTERNAL FLOOR AREA 650 SQ.FT (60.4 SQ.M)



FIFTH FLOOR



This floor plan has been defined by the RICS Code of Measurement. This floor plan and all others are for approximate representative purposes only and upon usage is agreed to as such by the client.
WWW: hdvirtualart.com | TEL: 0203.974.1567 | EMAIL: info@hdvirtualart.com

Knightsbridge
Wood Wharf,
London E14 5GX
+4420 7306 1600
lettingsknightsbridge@eu.jll.co

Urban living, your way.

jll.co.uk/residential

© 2019 Jones Lang LaSalle IP, Inc. All rights reserved. All information contained herein is from sources deemed reliable; however, no representation or warranty is made to the accuracy thereof.

