



**ATELIER POINT, JUPP ROAD WEST, E15**





A bright, spacious and modern two double bedroom two bathroom apartment located on the 4th floor of the iconic development, Atelier Point E15.

Situated on the 4th floor and comprising of approximately 705 square feet, the property boasts an open-plan living space leading to private balcony, fully fitted and ultra modern kitchen, two double bedrooms, main bedroom equipped with two fitted luxury wardrobes, two bathroom suites (one en-suite) and ample storage throughout.

Residents will further benefit from secure main entry system, lift access, residential roof terrace and underground parking (by separate negotiation).

All apartments are finished to a high standard, the specification includes a bespoke kitchen with Smeg appliances and a Quartz Stone worktop, fully tiled bathrooms with Villeroy and Boch sanitary ware and Grohe brassware, and Karndean flooring to the kitchen, living room and hallway with carpeted bedrooms.

Located a mere 0.3 mile walk to Stratford Station, approximately a 5 minute walk to one of London's most well connected and busiest stations. You are also just a couple of minutes walk to Stratford Westfield shopping Centre to indulge in retail therapy and a selection of some of London's most well known restaurants.

#### PRICE

OIEO £575,000

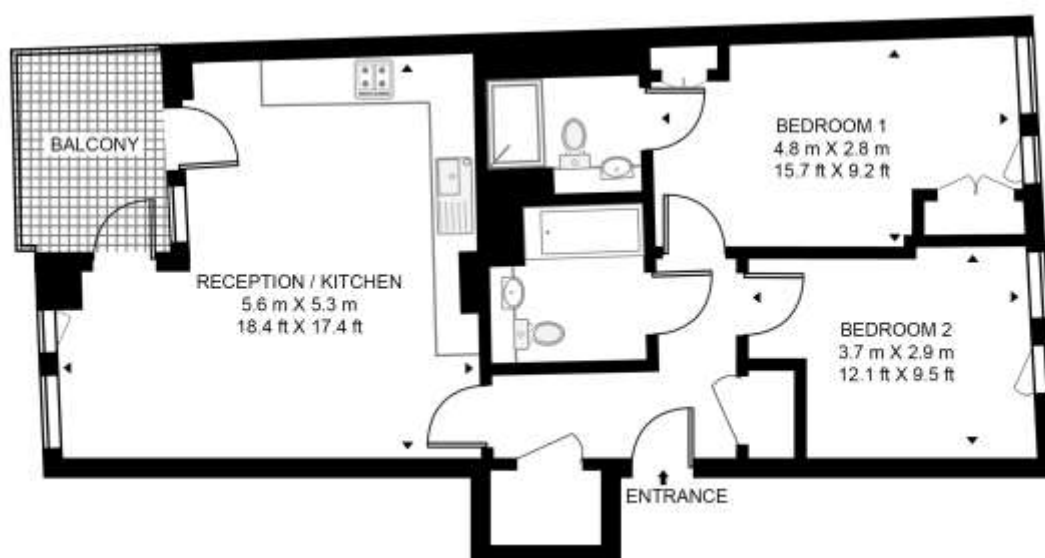
#### GROSS INTERNAL AREA

Approx. 705 sq. ft (65.5 sq. m)

- Two bedrooms
- Two bathrooms (one en-suite)
- 4th floor
- Modern and secure development
- Private balcony
- Underground parking (by separate negotiation)
- Approx. 705 sq. ft (65.5 sq. m)
- Visual intercom security system
- Short walk to Westfield's Stratford City
- 5min walk to Stratford Underground Station
- 2min walk to Stratford High-Street DLR Station
- EPC Rating: B

## ATELIER POINT, 32 JUPP ROAD

APPROXIMATE GROSS INTERNAL FLOOR AREA 705 SQ.FT (65.5 SQ.M)



### FOURTH FLOOR



This floor plan has been defined by the RICS Code of Measurement. This floor plan and all others are for approximate representative purposes only and upon usage is agreed to as such by the client.

WWW: [hdvirtualart.com](http://hdvirtualart.com) | TEL: 0203 974 1567 | EMAIL: [info@hdvirtualart.com](mailto:info@hdvirtualart.com)

Unex Tower  
5 Station Street  
London  
E15 1DA

These particulars are for general information only and do not constitute any part of an offer or contract. All statements contained therein are made without responsibility on the part of the vendors or lessors and are not to be relied upon as statement or representation of fact. Intending purchasers or lessees must satisfy themselves, by inspection, or otherwise, as to the correctness of each of the statements or dimensions contained in these particulars..