

Glentworth Street, London NW1

Price £850 per week - Furnished







Description

The apartment has been newly re-decorated throughout and offers superb living space with period features throughout. Comprising a spacious reception room with two large bay windows allowing in plenty of natural light, two full height double doors lead into the hallway giving the separate reception room an open plan feel, there is a separate kitchen, two double bedrooms and a family bathroom.

Clarence Gate Gardens is an Edwardian Mansion block with porter service located just a short walk to Baker Street Station. The Regents Park is also just a short walk as well as Marylebone High Street which offers an excellent selection of boutique shops, cafes and restaurants.

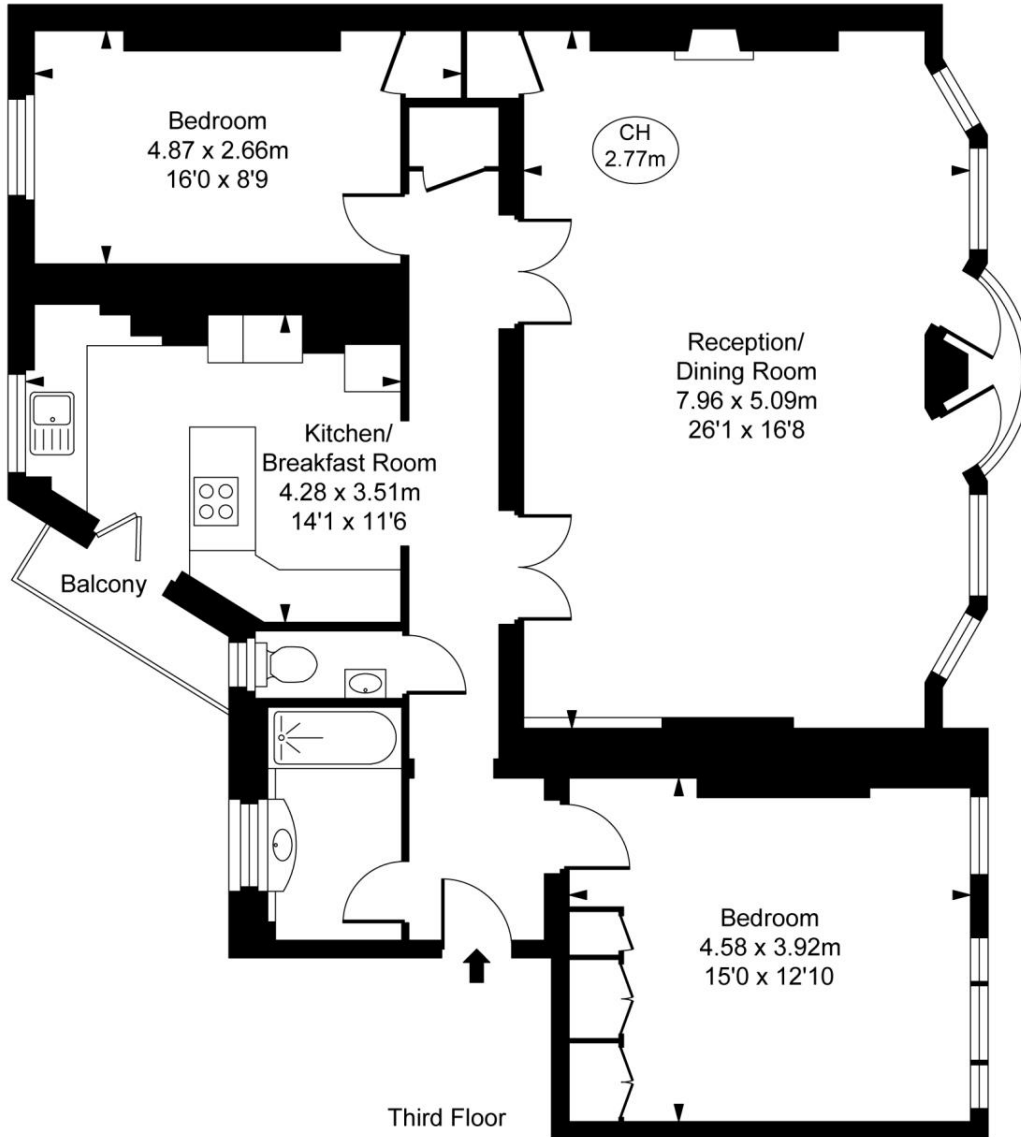
As well as paying the rent, you may also be required to make some additional permitted payments. If your tenancy does not qualify as an AST, additional fees may apply. Please visit jll.co.uk/fees for details of fees which may be payable when renting a property.

- Newly Re-decorated
- Measuring 107sqm / 1,150sqft
- Concierge
- Separate Kitchen
- Two Double Bedrooms
- Period Features
- Furnished
- Close to Baker Street Station

Floorplan

1,150 sq ft | 107 sq m

Clarence Gate Gardens,
Glentworth Street, NW1
Approximate Gross Internal Area
106.74 sq m / 1,149 sq ft
(CH = Ceiling Heights)



This plan is not to scale. It is for guidance and not for valuation purposes.
All measurements and areas are approximate only, and have been prepared in accordance with the current edition of the RICS Code of Measuring Practice.
© Fulham Performance

Mayfair and Marylebone
13a St George Street,
London W1S 2FQ
+44 207 399 5550
mayfair@jll.com

Urban living, your way.

jll.co.uk/residential

© 2019 Jones Lang LaSalle IP, Inc. All rights reserved. All information contained herein is from sources deemed reliable; however, no representation or warranty is made to the accuracy thereof.

