



## Kings Road, London SW3

Price £1,590 per week - Furnished





# Description

A superb two bedroom apartment ideally located for the many amenities of King's Road and within easy walking distance of Sloane Square underground station. The flat comprises spacious reception room, fully fitted kitchen, two double bedrooms, a family bathroom and a shower room.

Rent is payable on a monthly basis and you may be required to pay more than a month's rent in advance, depending on your circumstances. You will be required to pay a 1 week holding deposit following a successful offer. Utility bills, council tax, telephone line and broadband are not included in the rent. As well as paying the rent, you may also be required to make some additional permitted payments. If your tenancy does not qualify as an AST, additional fees may apply. Please visit [jll.co.uk/fees](http://jll.co.uk/fees) for details of fees which may be payable when renting a property.

- Spacious reception room
- Fully fitted kitchen
- 2 double bedrooms
- Family bathroom
- Shower room
- First and second floor
- Approx. 1343 sq ft (124 sq m)
- Furnished
- EPC: D
- Council tax band: E

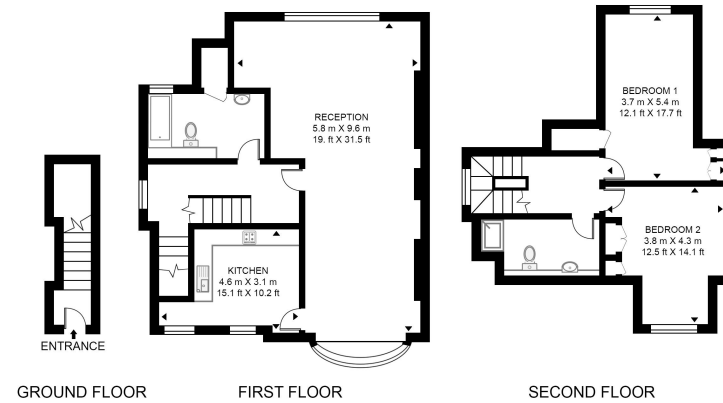


# Floorplan

1,343 sq ft | 125 sq m

## KINGS ROAD

APPROXIMATE GROSS INTERNAL FLOOR AREA 1346 SQ.FT (125.1 SQ.M)



This floor plan has been defined by the RICS Code of Measurement. This floor plan and all others are for approximate representative purposes only and upon usage is agreed to as such by the client.  
WWW: [hdvirtualart.com](http://hdvirtualart.com) | TEL: 0203.974.1567 | EMAIL: [info@hdvirtualart.com](mailto:info@hdvirtualart.com)

Chelsea  
2 Cale Street,  
London SW3 3QU  
+4420 7399 5010  
[lettingschelsea@eu.jll.com](mailto:lettingschelsea@eu.jll.com)

*Urban living, your way.*

[jll.co.uk/residential](http://jll.co.uk/residential)

© 2019 Jones Lang LaSalle IP, Inc. All rights reserved. All information contained herein is from sources deemed reliable; however, no representation or warranty is made to the accuracy thereof.

