



Moor Lane, London EC2Y

Price £585 per week - Furnished







Description

A luxury Galley Suite on the 11th floor of the prestigious Heron development.

This stunning apartment offers a well sized reception area, partitioned sleeping area with a desk / working space, open plan kitchen fully fitted with Miele appliances, tiled flooring throughout and luxury shower room. The property has a high specification with comfort cooling, iPod docking system, ceiling speakers and central control panel.

The development also benefits from an on-site gym, exclusive resident's club, 24 hour security and concierge and is located in the heart of the City of London, approximately 0.2 miles from Moorgate station.

We understand that cooling / heating is delivered via a communal system for which separate charges apply.

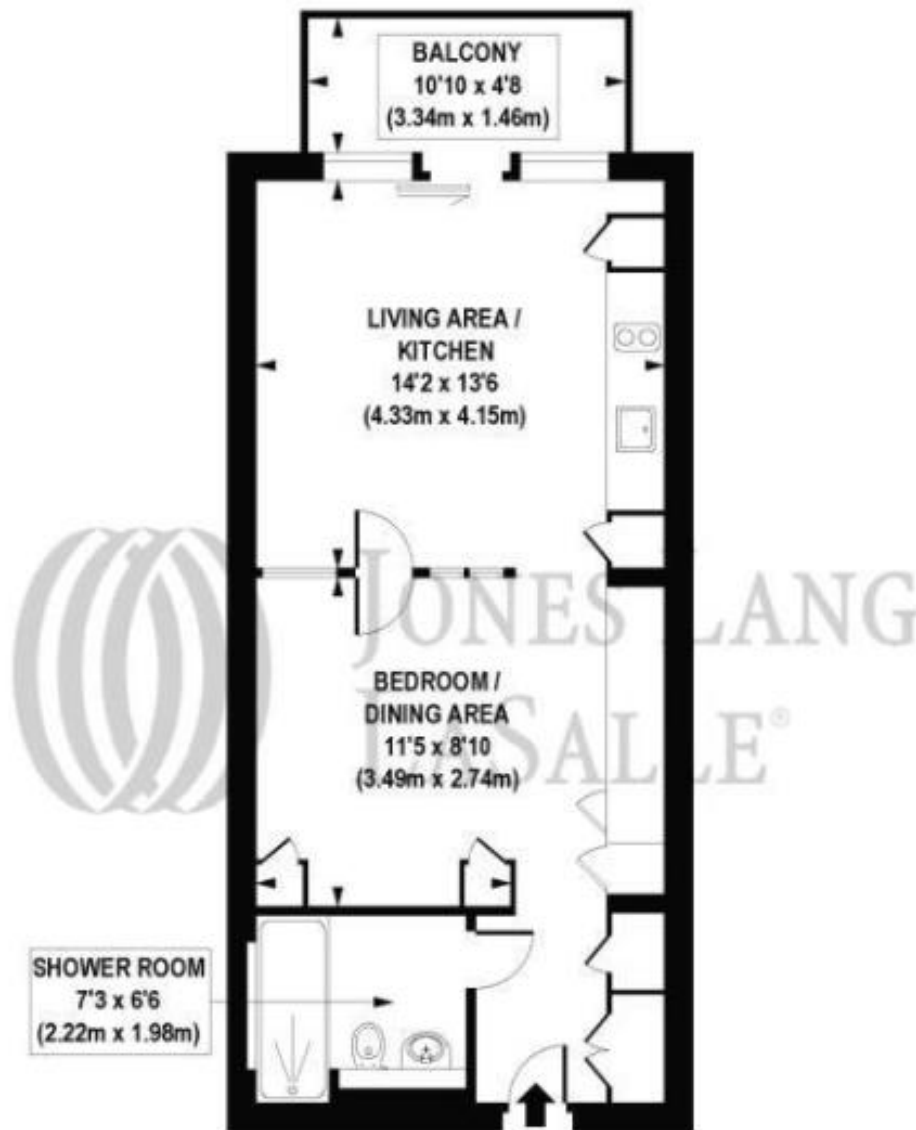
Rent is payable on a monthly basis and you may be required to pay more than a month's rent in advance, depending on your circumstances. You will be required to pay a 1 week holding deposit following a successful offer. Utility bills, council tax, telephone line and broadband are not included in the rent. As well as paying the rent, you may also be required to make som

- Studio
- 1 Bathroom
- Approx. 408 sq ft (37.9 sq m)
- West facing balcony
- High specification
- 24 Hour concierge and on site gym
- Approx. 0.2 miles from Moorgate station
- EPC:B
- Council tax: Band E
- Deposit amount: £2,925.00

Floorplan

408 sq ft | 38 sq m

- * Typical Galley Suite
- * Balconies on selected units



APPROX. GROSS INTERNAL FLOOR AREA 408 sq. ft / 38.00 sq. m

COMPLIANT WITH RICS CODE OF MEASURING PRACTICE Floorplan is for illustrative purposes only and is not to scale. Every attempt has been made to ensure the accuracy of the floorplan shown, however all measurements, fixtures, fittings and data shown are an approximate interpretation for illustrative purposes only. Liability for errors, omissions or misstatement through negligence or otherwise is hereby excluded.



City
25 Walbrook The Walbrook
Building,
London EC4N 8AF
+4420 7337 4000

Urban living, your way.

jll.co.uk/residential

© 2019 Jones Lang LaSalle IP, Inc. All rights reserved. All information contained herein is from sources deemed reliable; however, no representation or warranty is made to the accuracy thereof.

