



Bromyard Avenue, London W3

Guide price £420,000 Leasehold







Description

A fifth-floor apartment (with lift) in this popular gated development in West London. The property consists of a principal bedroom with en suite, a second double bedroom, a shower room, a reception room, and a fully fitted, open-plan kitchen.

Further benefits include wooden flooring in the reception room, a balcony, residents parking, and 24-hour concierge.

Napier House is conveniently located close to Westfield Shopping Centre and the open spaces of Acton Park.

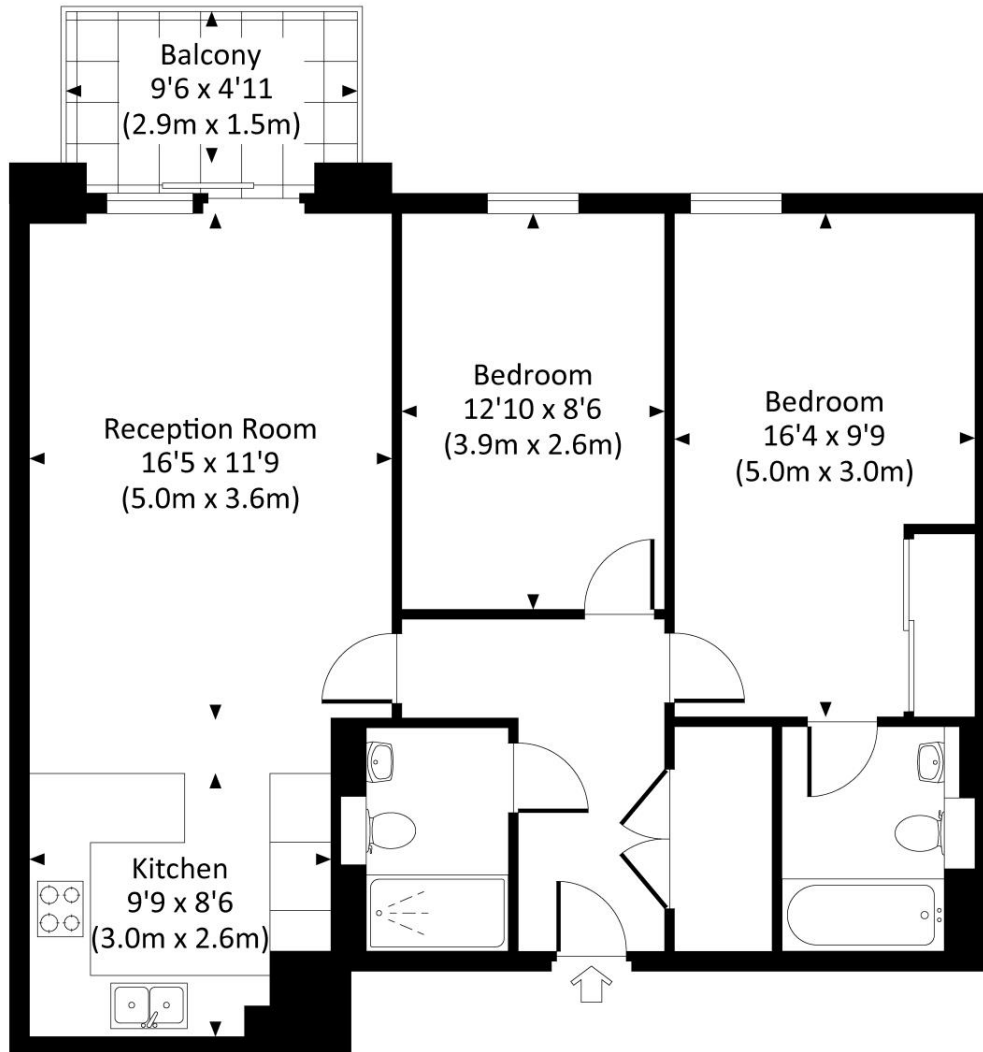
- 2 double bedrooms
- 2 bathrooms
- Balcony
- 24 hr Concierge
- Underground parking
- Approx 756 sq ft (70 sq m)
- EPC C

Floorplan

756 sq ft | 70 sq m

NAPIER HOUSE, W3

Approx. gross internal area
756 Sq Ft. / 70.3 Sq M.



FIFTH FLOOR

All measurements are approximate and for guidance and illustrative purposes only.
Photography and Floor Plans by www.rayco.london - +44 7793 974 209

Kensington
387 Kensington High Street,
London W14 8QA
+4420 7087 5696
saleskensington@eu.jll.com

Urban living, your way.

jll.co.uk/residential

© 2019 Jones Lang LaSalle IP, Inc. All rights reserved. All information contained herein is from sources deemed reliable; however, no representation or warranty is made to the accuracy thereof.

