



Loop Court, Telegraph Avenue, Greenwich, London SE10 0TA



Loop Court, Greenwich, London, SE10

Leasehold (999 years)

A light and beautifully presented two bedroom, two bathroom apartment located on the 6th floor, just moments from Greenwich Park and The Thames in Enderby Wharf.

Key Features

- Private balcony
- Close to Maze Hill mainline
- On-site leisure facilities
- Concierge
- Council Tax: C
- Service Charge: £2,670 p/a
- Ground Rent: £400 p/a
- EPC: B

The accommodation comprises large entrance hall with built in cupboards, open plan reception / kitchen with access onto a private balcony. Two double bedrooms, master with en-suite shower room and second bedroom has built in wardrobes and access onto the same private balcony. A separate family bathroom.

Enderby Wharf development located on Telegraph Avenue in SE10, within the Greenwich Peninsula area of London and benefits from a range of amenities for its residents. These include communal gardens, fitness facilities, concierge services, and secure parking. The development also offer additional communal spaces such as lounges or rooftop terraces, providing residents with areas to relax, socialize, or enjoy panoramic views of the surrounding area.







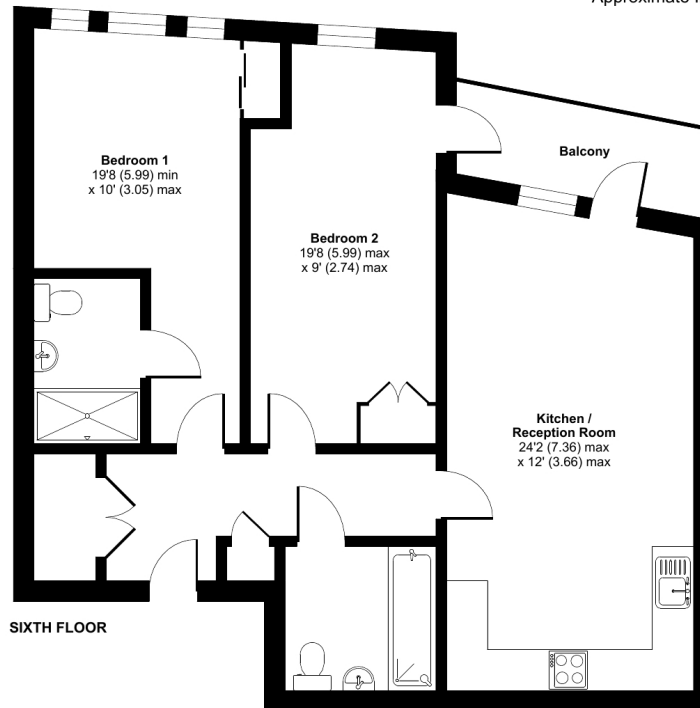


Loop Court, Telegraph Avenue, London, SE10 0TA

Approximate Internal Area = 840 sq ft / 78 sq m

Balcony = 54 sq ft / 5 sq m

For identification only - Not to scale



Floor plan produced in accordance with RICS Property Measurement Standards incorporating International Property Measurement Standards (IPMS2 Residential). © rlxhcom 2024. Produced for JLL Residential. REF: 1079453

22 College Approach, Greenwich, London,
SE10 9HY

Sales, Lettings & Property Management

Tel: 020 8858 9986

residential.jll.co.uk

