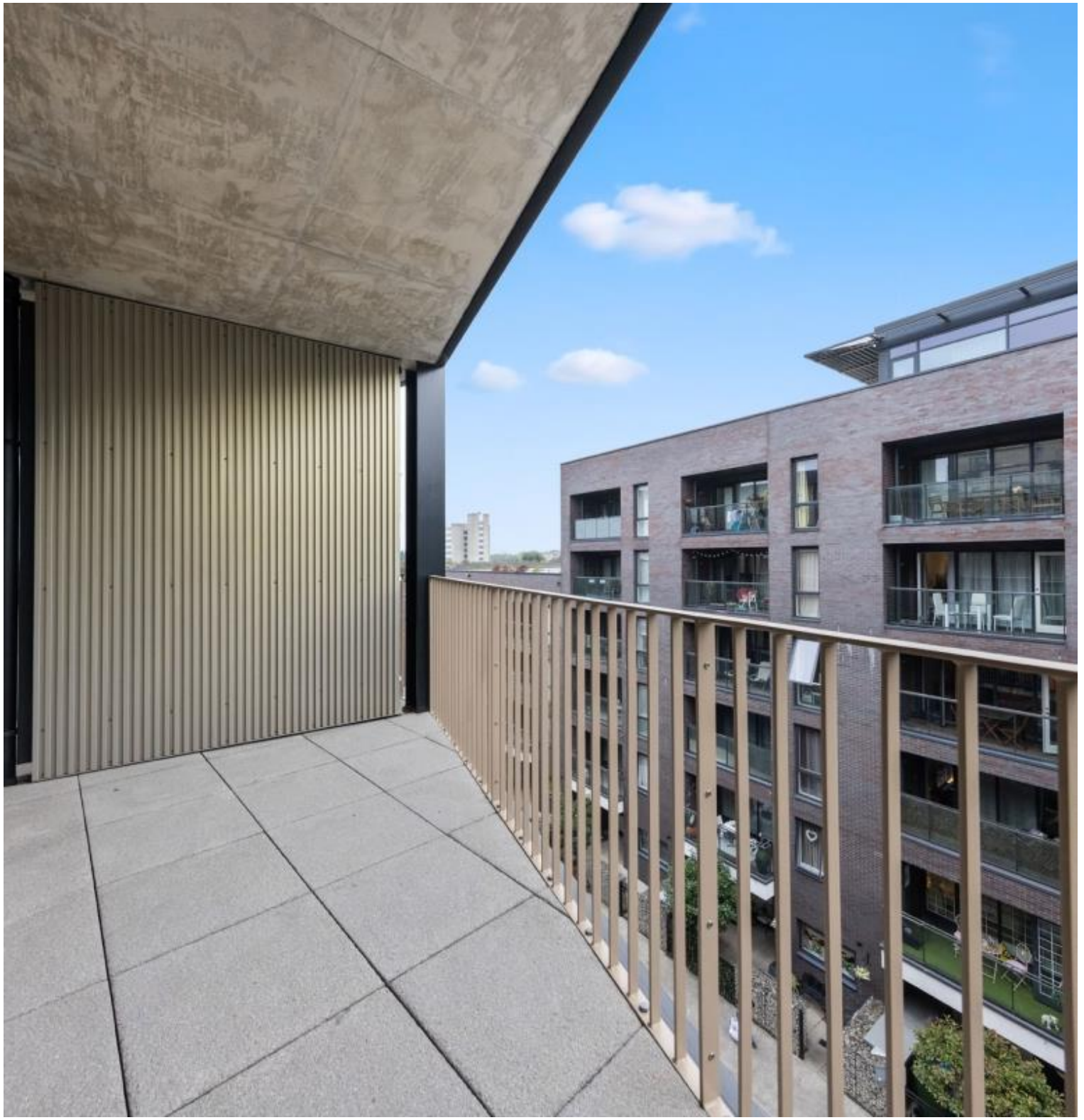


## Spa Road, London SE16

Price £625 per week - Furnished, Unfurnished







## Description

A brand new 2 bedroom apartment in Dockley Apartments, located in the very heart of Bermondsey, Zone 1's creative hub and set around a communal courtyard and several roof terraces.

Situated on the 4th floor, this 2 bedroom apartment boasts approximately 814sq ft of living space. Offered fully furnished or unfurnished, the apartment comprises 2 double bedrooms with fitted wardrobes and one with an ensuite bathroom, reception with large terrace with views across to the London Skyline, open plan fitted kitchen with integrated appliances and contemporary main bathroom. Each apartment is finished to a high specification with underfloor heating and the development benefits from stunning courtyards and three roof top terraces. Bermondsey station is just 0.3 miles away accessing the Jubilee line.

Rent is payable on a monthly basis and you may be required to pay more than a month's rent in advance, depending on your circumstances. You will be required to pay a 1 week holding deposit following a successful offer. Utility bills, council tax, telephone line and broadband are not included in the rent. As well as paying the rent, you may also be required to make some additional permitted payments. If your tenancy does not q

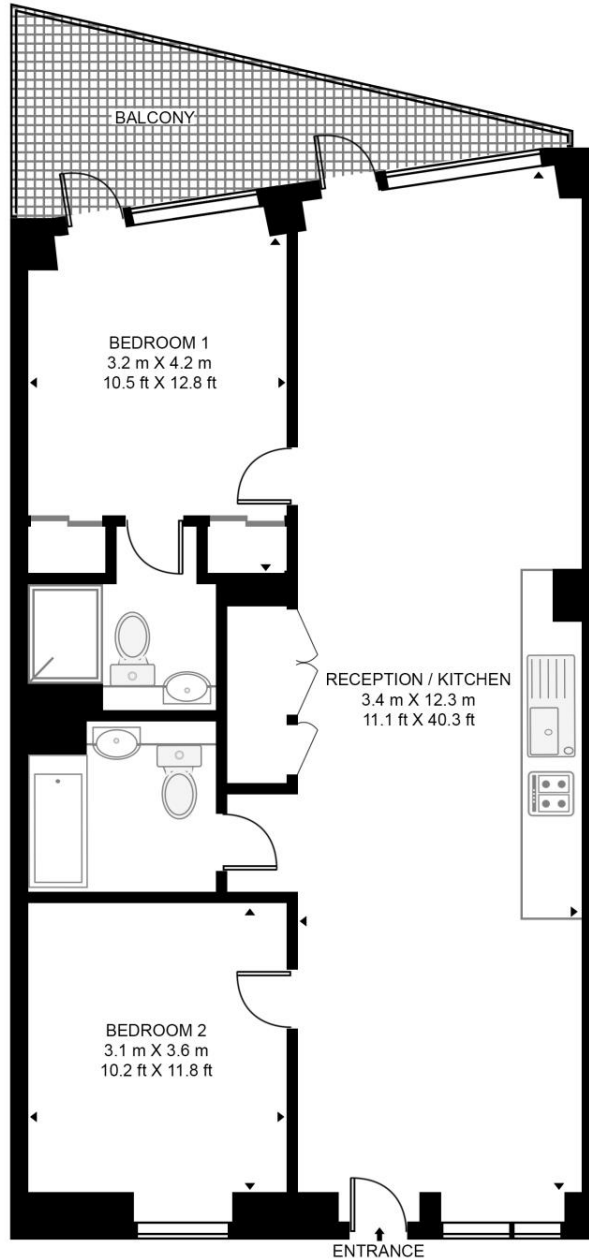
- 2 Bedrooms
- 2 Bathrooms (one ensuite)
- Private balcony
- 4th Floor
- 0.3 miles from Bermondsey Station
- Approx. 814 sq ft (75.6 sq m)
- Furnished or Unfurnished
- EPC: B
- Council tax: Band E
- Deposit amount: £3,124.99

# Floorplan

814 sq ft | 76 sq m

## DOCKLEY APARTMENTS, 5 DOCKLEY ROAD

APPROXIMATE GROSS INTERNAL FLOOR AREA 814 SQ.FT (75.6 SQ.M)



FOURTH FLOOR



This floor plan has been defined by the RICS Code of Measurement. This floor plan and all others are for approximate representative purposes only and upon usage is agreed to as such by the client.  
WWW: [hdvirtualart.com](http://hdvirtualart.com) | TEL: 0203.974.1567 | EMAIL: [info@hdvirtualart.com](mailto:info@hdvirtualart.com)

City  
25 Walbrook The Walbrook  
Building,  
London EC4N 8AF  
+4420 7337 4000

*Urban living, your way.*

[jll.co.uk/residential](http://jll.co.uk/residential)

© 2019 Jones Lang LaSalle IP, Inc. All rights reserved. All information contained herein is from sources deemed reliable; however, no representation or warranty is made to the accuracy thereof.

