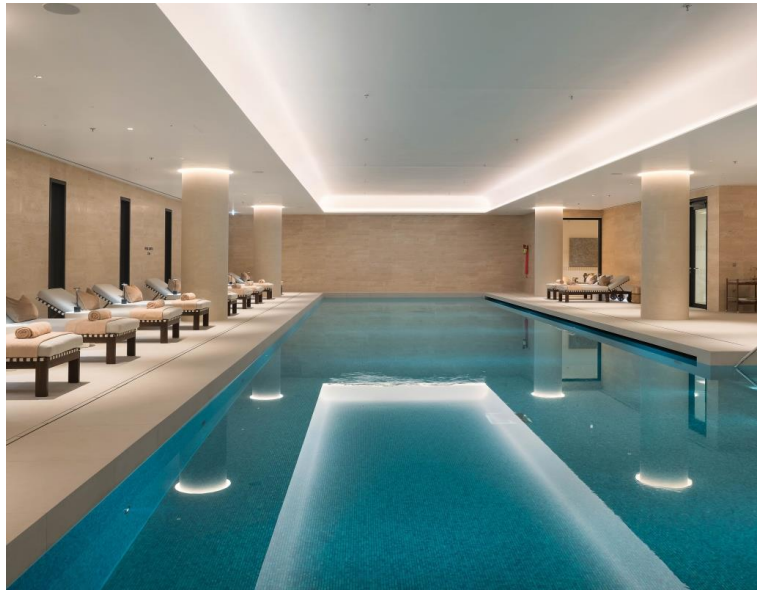


**Dacre Street, London SW1H**

Price £1,200 per week - Unfurnished







## Description

This one bedroom apartment offers a contemporary interior living space which is flooded with natural light through the unique diamond window frame. The kitchen is designed with integrated Gaggenau and Miele appliances as well as Bardiglio Italian marble worktop finishes. The bathroom features an Italian marble finish, and Corian bath and basin. Additionally, there are communal gardens connecting each tower on the fourth floor that each resident has access to. The apartment can come on a furnished / unfurnished basis and will be professionally managed by JLL for the duration of any tenancy.

The development benefits from a number of resident facilities as well as a spa which offers two wellness and treatment rooms, a 25m heated indoor pool, a vitality pool, steam room, sauna, gym, personal training studio and changing facilities. Underground parking is available for select apartments by separate negotiation.

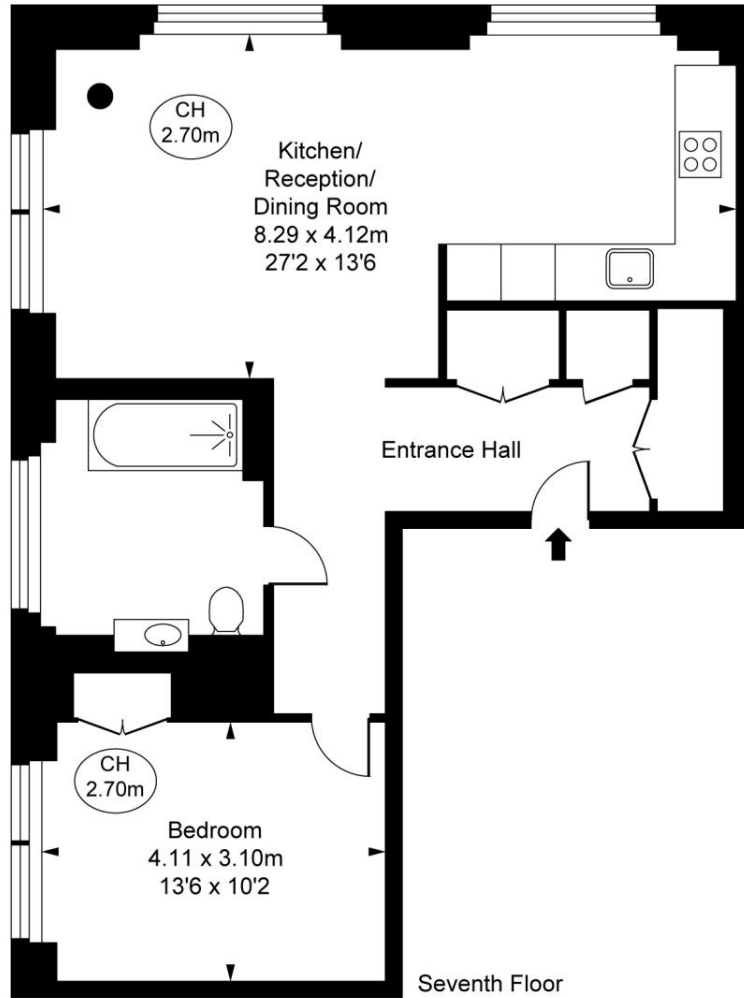
The Broadway is a luxury collection of apartments located in the historic Westminster borough, and provides unrivalled views towards The Houses of Parliament, Westminster Abbey, Big Ben and Buckingham Palace. The Broadway embodies all of the hallmarks of a world-class development. St James's Park underground station and Victoria Station are nearby and the op

- One bedroom
- One bathroom
- Reception
- Open plan kitchen
- 24-hour concierge
- Gym
- Pool/Sauna/Steam room
- Communal gardens
- Italian marble countertop finishes
- Underfloor heating and comfort cooling

# Floorplan

sq ft | sq m

The Broadway,  
Dacre Street, SW1H  
Approximate Gross Internal Area  
**68.70 sq m / 740 sq ft**  
( CH = Ceiling Heights )



This plan is not to scale. It is for guidance and not for valuation purposes.  
All measurements and areas are approximate only, and have been prepared in accordance with the current edition of the RICS Code of Measuring Practice.  
© Fulham Performance

Knightsbridge  
Wood Wharf,  
London E14 5GX  
+4420 7306 1600  
lettingsknightsbridge@eu.jll.co

*Urban living, your way.*

[jll.co.uk/residential](http://jll.co.uk/residential)

© 2019 Jones Lang LaSalle IP, Inc. All rights reserved. All information contained herein is from sources deemed reliable; however, no representation or warranty is made to the accuracy thereof.

