



Wycombe Street, London SE14 6LQ



## Wycombe Street, London, SE14

### Leasehold

***Located just by Charlottenburg Park in the vibrant Deptford comes this duplex apartment at The Scene within walking distance of New Cross Station.***

### Key Features

- 2 Double bedrooms
- 2 Bathrooms + WC
- Duplex apartment
- Terrace
- Service Charge: £1,998.12 p/a
- No ground rent
- Council tax band: TBC
- EPC: B

---

This property has been carefully designed with spacious living spaces, exceptional finishes and integrated appliances and all come with a private garden for you to call home.

Situated at the edge of a park, one of the most pleasing aspects of life at The Scene is easy access to open spaces offering places to pause, think, relax and exercise.

Nearby Greenwich Park and Observatory Gardens dominates the wider local area both in terms of green space and its stunning panoramic views. To the north, the Thames weaves its way through London, opening up vistas to the impressive skyline of Canary Wharf across the river. Burgess Park and Peckham Rye to the west of Deptford complete the ring of green spaces that orbit the development.









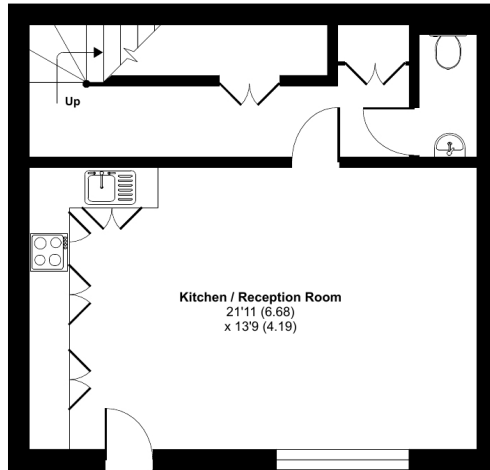




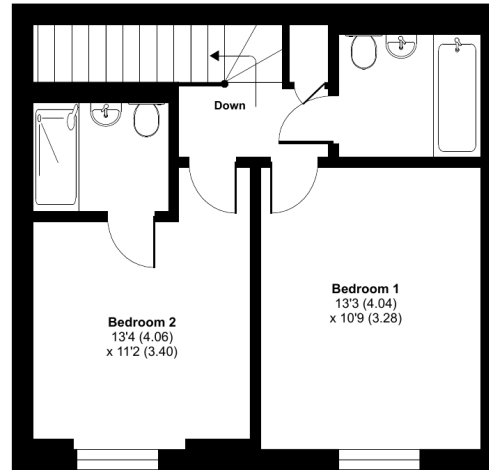
# Hendrix Court, Wycombe Street, London, SE14

Approximate Area = 916 sq ft / 85.1 sq m

For identification only - Not to scale



GROUND FLOOR



FIRST FLOOR



Floor plan produced in accordance with RICS Property Measurement Standards incorporating International Property Measurement Standards (IPMS2 Residential). © rlxhcom 2023. Produced for JLL Residential. REF: 1062965

22 College Approach, Greenwich, London,  
SE10 9HY

Sales, Lettings & Property Management

Tel: 020 8858 9986

[residential.jll.co.uk](https://residential.jll.co.uk)

