



# Station Street, London E15

Guide price £600,000 Leasehold







## Description

A beautifully presented seventh floor two double bedroom apartment spanning just under 1000 sq.ft in one of Stratford City's most iconic developments, Unex Tower. Living here you will be located directly opposite Stratford's Westfield shopping Centre and underground station for an easy commute to Canary Wharf, The City and West London.

The accommodation comprises large entrance hall with two large storage cupboards, modern family bathroom suite, fully fitted and integrated ultra-modern kitchen, large open plan reception room with floor-to-ceiling windows allowing unrestricted views leading to private winter garden, and two double bedrooms.

With Stratford Westfield on your doorstep, you are also across the street to London's best connected transport hubs for Central, Jubilee, DLR, Overground, Elizabeth Line and TFL rail lines. You are also located walking distance to the famous Olympic park and East Village which is now home to many independent bars, restaurants and cafes.

Years remaining on lease: 241, Service charge: £3600pa, Ground rent: NA, Council tax band: D

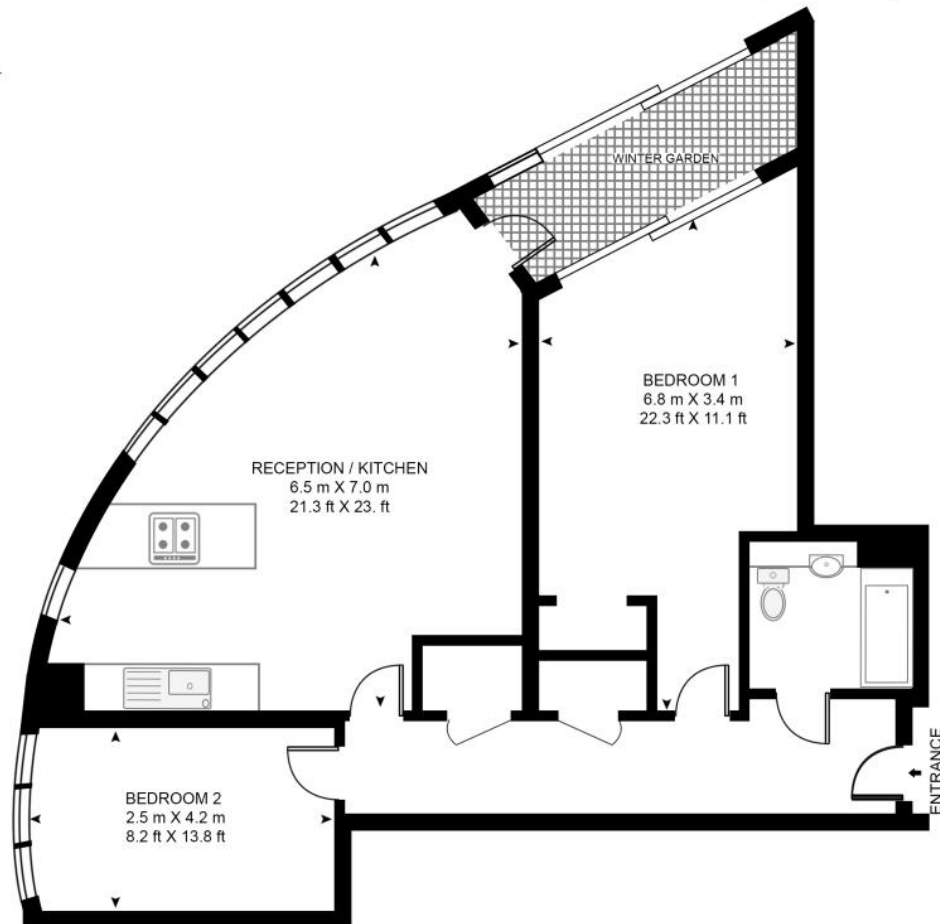
- Two bedrooms
- One bathroom
- Winter garden
- 7th Floor
- Approx 978sq.ft (90.9 sq.m)
- 24hr Concierge
- Views across the City & Olympic Park
- Residents roof terrace
- Moments from Stratford Station
- EPC: B

# Floorplan

978 sq ft | 91 sq m



## UNEX TOWER, E15 APPROXIMATE GROSS INTERNAL FLOOR AREA 978 SQ.FT (90.9 SQ.M)



Whilst every attempt has been made to ensure the accuracy of the floor plan contained here, measurements of door, windows, rooms and any other items are approximate and no responsibility is taken for any error, omission, or mis-statement. The plan for illustrative purposes only and should be used as such by any prospective purchaser. The services, system and appliances shown have not been tested and no guarantee as to their operability or efficiency can be given.

Stratford  
5 Station Street,  
London E15 1DA  
+4420 3147 1500  
salesstratford@eu.jll.com

*Urban living, your way.*

[jll.co.uk/residential](http://jll.co.uk/residential)

© 2019 Jones Lang LaSalle IP, Inc. All rights reserved. All information contained herein is from sources deemed reliable; however, no representation or warranty is made to the accuracy thereof.

