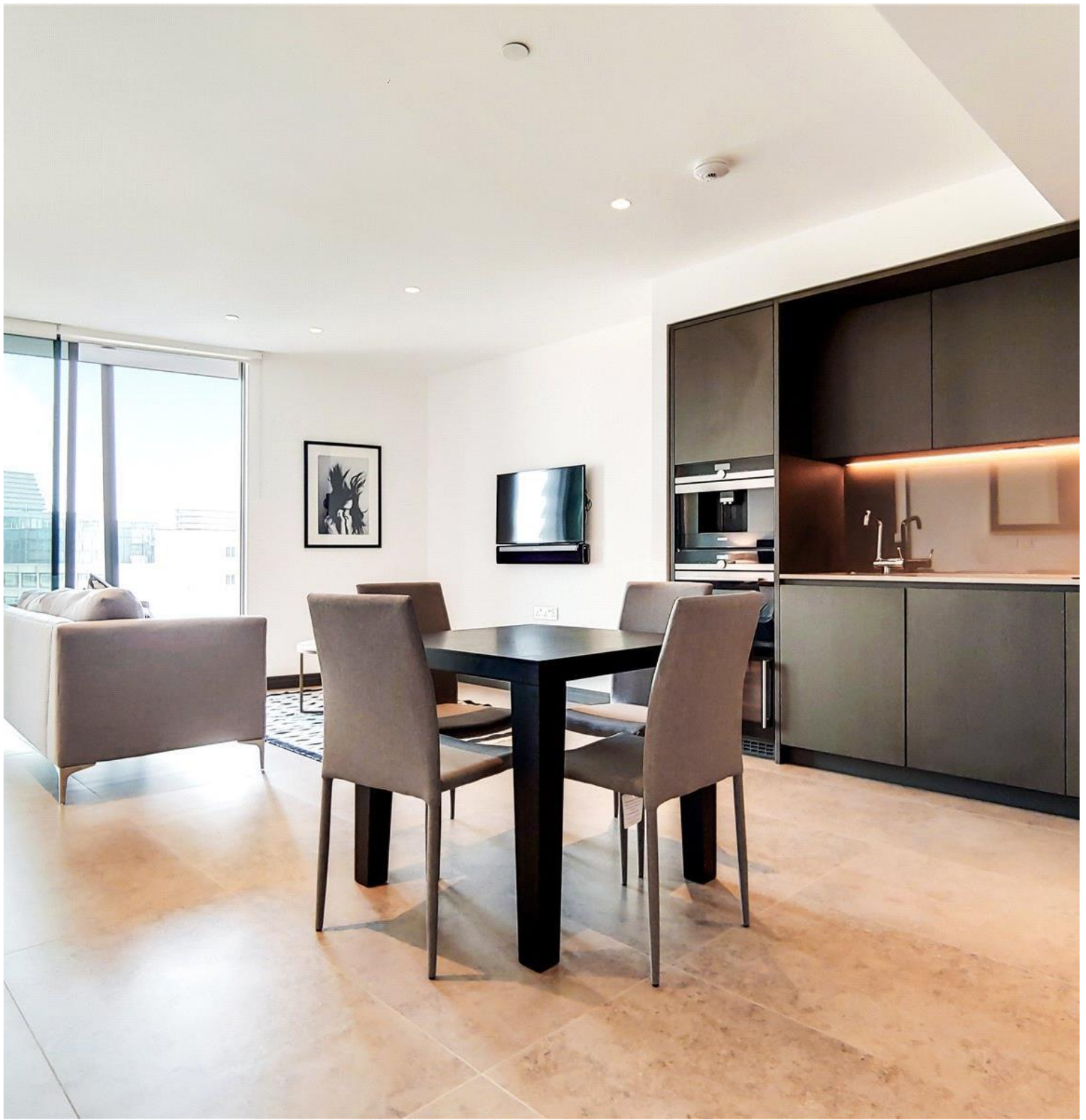




Blackfriars Road, London SE1

Price £785 per week - Furnished







Description

A stunning 1 bedroom apartment in the sought after and iconic, One Blackfriars.

Situated on the 12th floor, this spacious 1 bedroom apartment is furnished to a high standard and comprises large reception area with West facing and river views towards Parliament and the London Eye, fully fitted kitchen with Siemens appliances, bedroom with fitted wardrobes, luxury stone shower room, composite stone flooring and excellent storage space.

The development boasts an extremely high specification, with each apartment coming with tailored iPad and smart home technology, comfort cooling, and sky garden. One Blackfriars also boasts luxury on site amenities with 24 hour concierge, private cinema, sky lounge, gym, pool and spa. One Blackfriars is well situated for the City, located on Blackfriars Bridge, moments from Blackfriars Station.

As well as paying the rent, you may also be required to make the following permitted payments. If your tenancy does not qualify as an AST, additional fees may apply. Please visit jll.co.uk/fees for details of fees which may be payable when renting a property.

- 1 Bedroom
- 1 Bathroom
- 12th floor
- Private sun-garden
- Fully fitted kitchen
- 24 hour concierge
- On-site leisure facilities
- 0.2 miles from Blackfriars Station
- Approx. 594 sq ft (55.2 sq m)
- Furnished

Floorplan

594 sq ft | 55 sq m

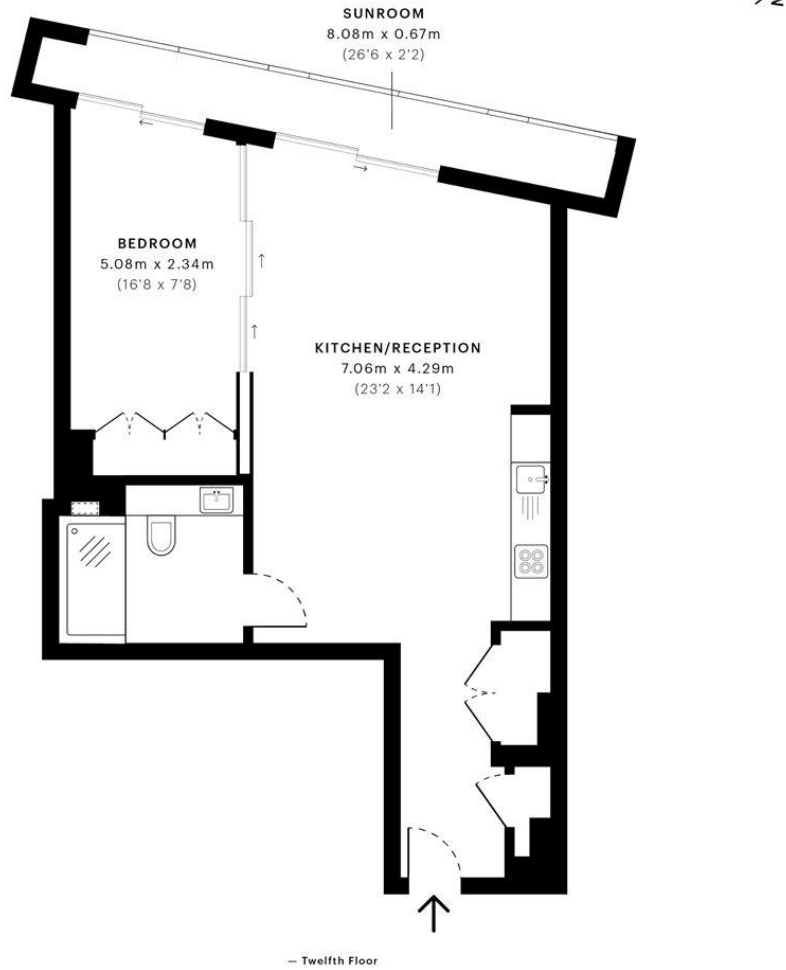


Blackfriars Road, SE1

CAPTURE DATE
08/10/2019

LASER SCAN POINTS
20,721,080

GROSS INTERNAL AREA
56.9 Sqm / 612.5 Sqft



GROSS INTERNAL AREA
The footprint of the property
56.9 Sqm / 612.5 Sqft

NET AREA (INTERNAL)
Excludes walls and external features
55.2 Sqm / 594.3 Sqft

EXTERNAL STRUCTURAL FEATURES
Balconies, terraces, verandas etc.
0.0 Sqm / 0.0 Sqft

RESTRICTED HEAD HEIGHT
Limited use area under 1.5m
0.0 Sqm / 0.5 Sqft



Spec floor plans are produced in accordance with the Royal Institution of Chartered Surveyors' Property Measurement Standards. Plots and gardens are illustrative only and are excluded from all area calculations. Due to rounding, numbers may not add up precisely. All measurements shown for the individual room lengths and widths are the maximum points of measurements captured in the scan.

IPMS 3B RESIDENTIAL
56.9 Sqm / 612.5 Sqft

IPMS 3C RESIDENTIAL
55.2 Sqm / 594.3 Sqft

SPEC ID
5d95dbd3a6537d0a216d4cda

City
25 Walbrook The Walbrook
Building,
London EC4N 8AF
+4420 7337 4000

Urban living, your way.

jll.co.uk/residential

© 2019 Jones Lang LaSalle IP, Inc. All rights reserved. All information contained herein is from sources deemed reliable; however, no representation or warranty is made to the accuracy thereof.

