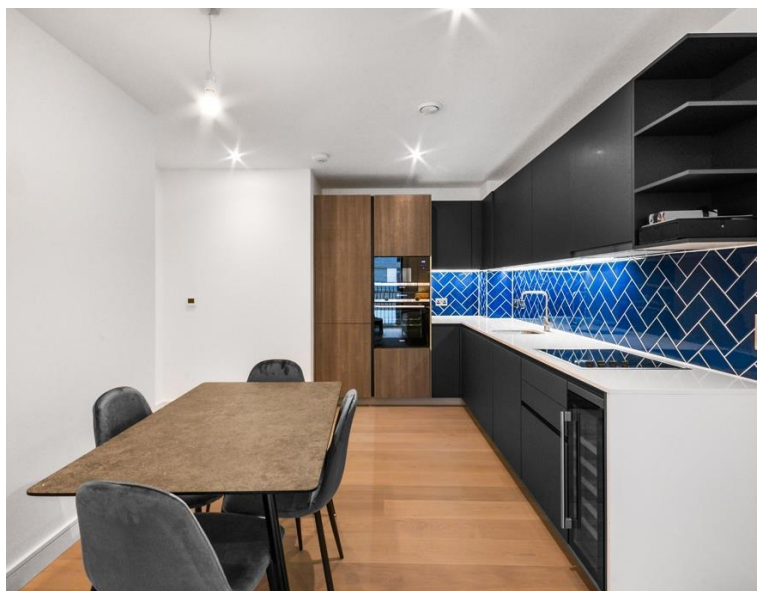
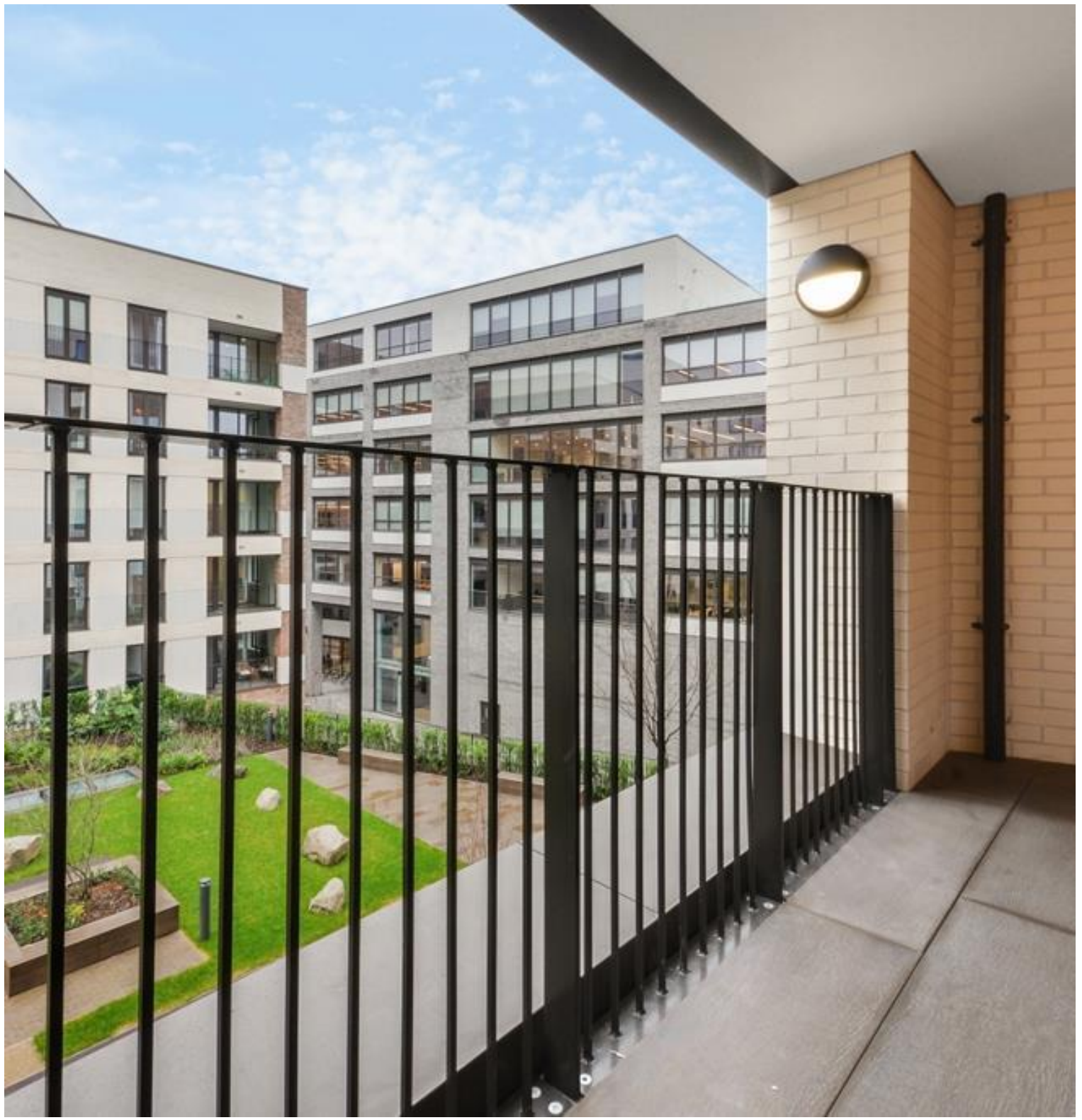




Gorsuch Place, London E2

Price £690 per week - Furnished







Description

A luxury 2 bedroom, 2 bathroom apartment in Rosewood Building, Shoreditch Exchange, a development by Regal Homes.

Situated on the 3rd floor, this spacious 2 bedroom apartment comprises 2 double bedrooms with fitted wardrobes to each bedroom, large open plan living area with large balcony, fully fitted kitchen with integrated Siemens appliances, two luxury bathrooms, wood flooring and excellent storage space.

Shoreditch Exchange is well situated for the City of London, and is in the heart of the ever popular and vibrant Shoreditch. The development is moments from Hoxton station (0.1 mile), well situated for the City of London and in the heart of Shoreditch. Other benefits include 24 hour concierge, on site gymnasium and private cinema, along with a rooftop terrace.

Rent is payable on a monthly basis and you may be required to pay more than a month's rent in advance, depending on your circumstances. You will be required to pay a 1 week holding deposit following a successful offer. Utility bills, council tax, telephone line and broadband are not included in the rent. As well as paying the rent, you may also be required to make some additional permitted payments. If your tenancy does not q

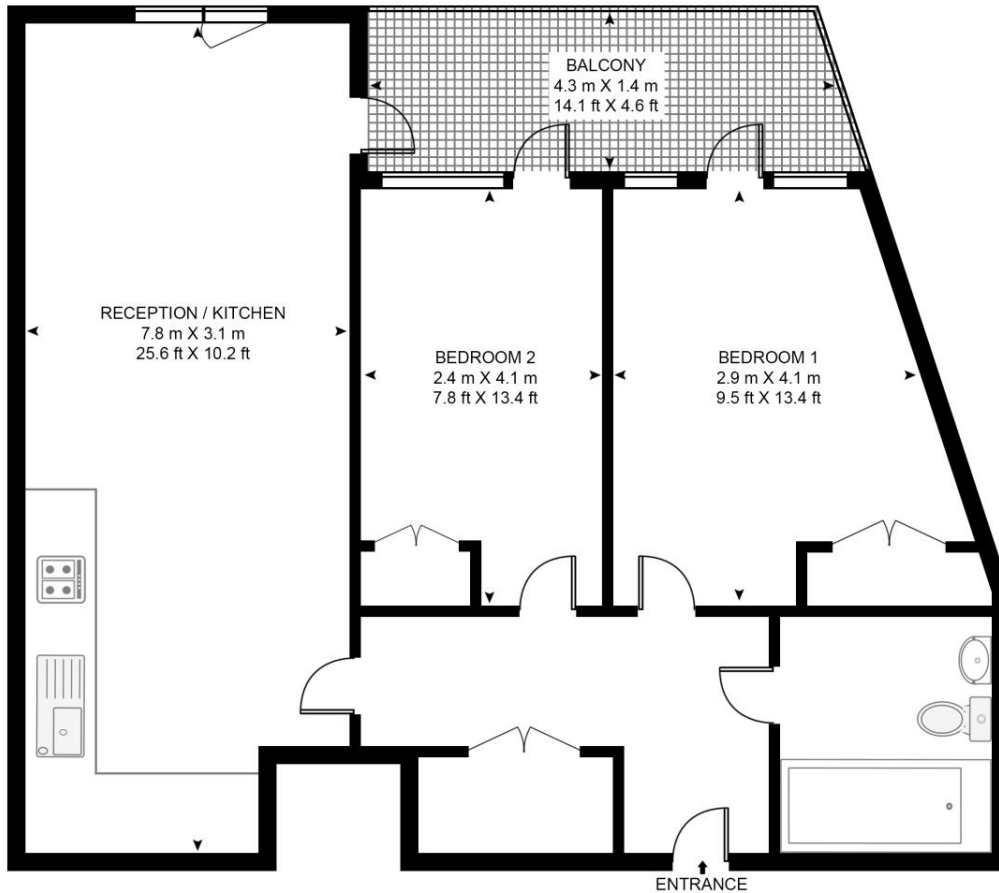
- 2 Bedrooms
- 1 Bathroom
- 3rd Floor
- Balcony
- 24 hour concierge
- On-site leisure facilities including gym, cinema and roof-terrace
- 0.1 miles from Hoxton Station
- Approx. 645 sq ft (60 sq m)
- Furnished
- EPC: B

Floorplan

645 sq ft | 60 sq m

ROSEWOOD BUILDING, GORSUCH PLACE

APPROXIMATE GROSS INTERNAL FLOOR AREA 645.8 SQ.FT (60 SQ.M)



THIRD FLOOR



This floor plan has been defined by the RICS Code of Measurement. This floor plan and all others are for approximate representative purposes only and upon usage is agreed to as such by the client.
WWW: hdvirtualart.com | TEL: 0203.974.1567 | EMAIL: info@hdvirtualart.com

City
25 Walbrook The Walbrook
Building,
London EC4N 8AF
+4420 7337 4000

Urban living, your way.

jll.co.uk/residential

© 2019 Jones Lang LaSalle IP, Inc. All rights reserved. All information contained herein is from sources deemed reliable; however, no representation or warranty is made to the accuracy thereof.

