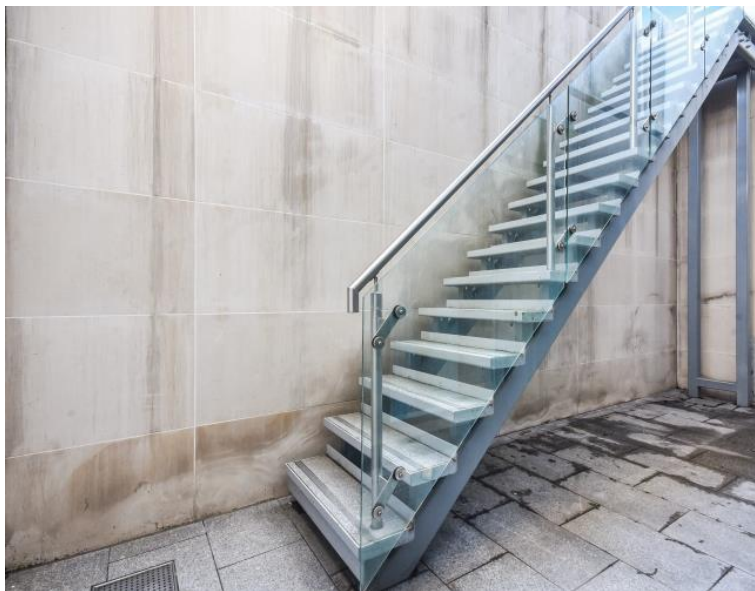




## Radnor Terrace, London W14

Guide price £1,395,000 Leasehold







## Description

A stunning and spacious two double bedroom duplex apartment situated within the esteemed development, 375 Kensington High Street. It features a top of the range integrated open-plan kitchen and living room on the ground floor along with a guest WC, two double bedrooms (both en-suite) and a storage room arranged over the lower ground floor with access to the private patio. This property also comes with secure underground parking.

Residents benefit from 24 hour concierge, the use of leisure facilities including a swimming pool, gym, cinema room, business suite and communal gardens.

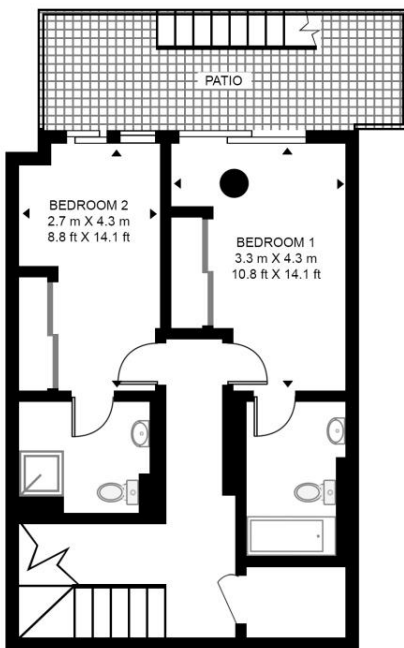
- 2 Bedrooms
- 2 Bathrooms plus guest WC
- Secure underground parking Included
- Private patio
- 24 Hour concierge
- Swimming pool, cinema, gym
- Approx 1134 sq ft (105 sq m)

# Floorplan

1,134 sq ft | 105 sq m

## BRIDGEMAN HOUSE, 1 RADNOR TERRACE

APPROXIMATE GROSS INTERNAL FLOOR AREA 1134 SQ.FT (105.4 SQ.M)



LOWER GROUND FLOOR



GROUND FLOOR



This floor plan has been defined by the RICS Code of Measurement. This floor plan and all others are for approximate representative purposes only and upon usage is agreed to as such by the client.

WWW: [hdvirtualart.com](http://hdvirtualart.com) | TEL: 0203.974.1567 | EMAIL: [info@hdvirtualart.com](mailto:info@hdvirtualart.com)

Kensington  
387 Kensington High Street,  
London W14 8QA  
+4420 7087 5696  
[saleskensington@eu.jll.com](mailto:saleskensington@eu.jll.com)

*Urban living, your way.*

[jll.co.uk/residential](http://jll.co.uk/residential)

© 2019 Jones Lang LaSalle IP, Inc. All rights reserved. All information contained herein is from sources deemed reliable; however, no representation or warranty is made to the accuracy thereof.

