

Portugal Street, London WC2A

Price £1,345 per week - Furnished







Description

A spacious 2 bedroom apartment in the luxurious Lincoln Square, WC2.

Fully furnished to a high standard, this stunning 2 bedroom apartments boasts approximately 1141 sq ft of living space. The apartment comprises a spacious reception area, fully fitted kitchen with Miele appliances, two double bedrooms with large fitted wardrobes, two luxury bathrooms, wood flooring, and excellent storage.

The development offers on site fantastic amenities which include gym, health club with a swimming pool, private cinema, club room and library, billiards room and 24 hour concierge. Lincoln Square is next to the historic Royal Courts of Justice and moment from the world famous Strand and Covent Garden. Temple Station is approximately 0.3 miles, and Holborn is approximately 0.4 miles

We understand that cooling / heating is delivered via a communal system for which separate charges apply.

Rent is payable on a monthly basis and you may be required to pay more than a month's rent in advance, depending on your circumstances. You will be required to pay a 1 week holding de

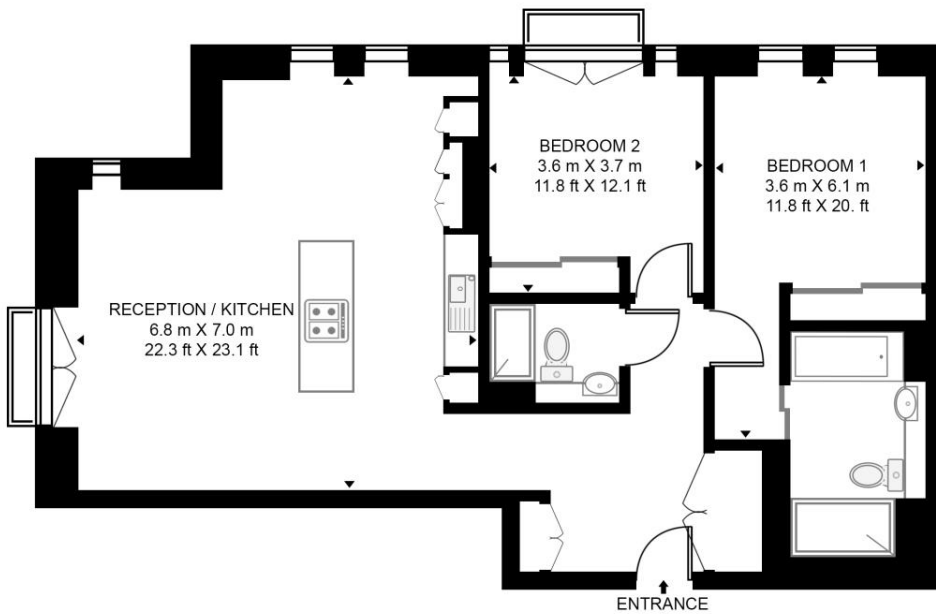
- 2 Bedrooms
- 2 Bathrooms
- 1st floor
- Fully fitted kitchen with Miele appliances
- Wood flooring
- On-site leisure facilities
- 0.3 miles from Temple Station
- Approx 1144 sq ft (106.3 sq m)
- Furnished
- EPC: B

Floorplan

1,144 sq ft | 106 sq m

LINCOLN SQUARE, 18 PORTUGAL STREET

APPROXIMATE GROSS INTERNAL FLOOR AREA 1144 SQ.FT (106.3 SQ.M)



FIRST FLOOR



This floor plan has been defined by the RICS Code of Measurement. This floor plan and all others are for approximate representative purposes only and upon usage is agreed to as such by the client.
WWW: hdvirtualart.com | TEL: 0203.974.1567 | EMAIL: info@hdvirtualart.com

City
25 Walbrook The Walbrook
Building,
London EC4N 8AF
+4420 7337 4000

Urban living, your way.

jll.co.uk/residential

© 2019 Jones Lang LaSalle IP, Inc. All rights reserved. All information contained herein is from sources deemed reliable; however, no representation or warranty is made to the accuracy thereof.

