



## City Road, London EC1V

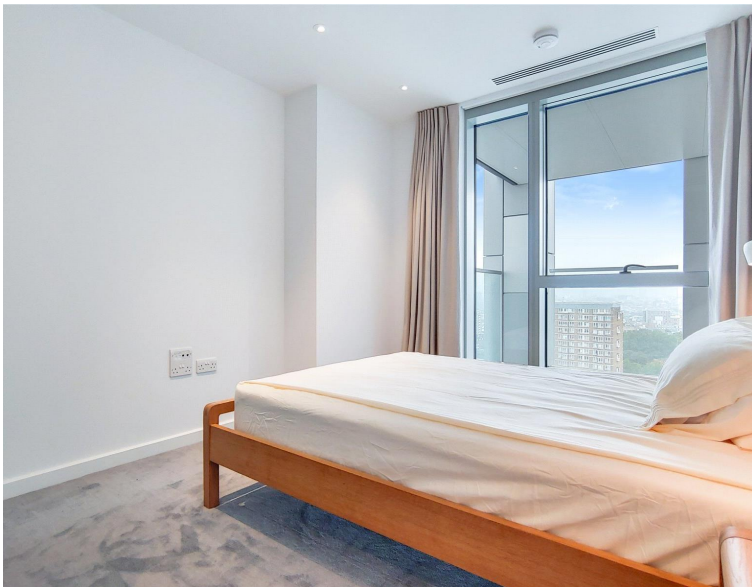
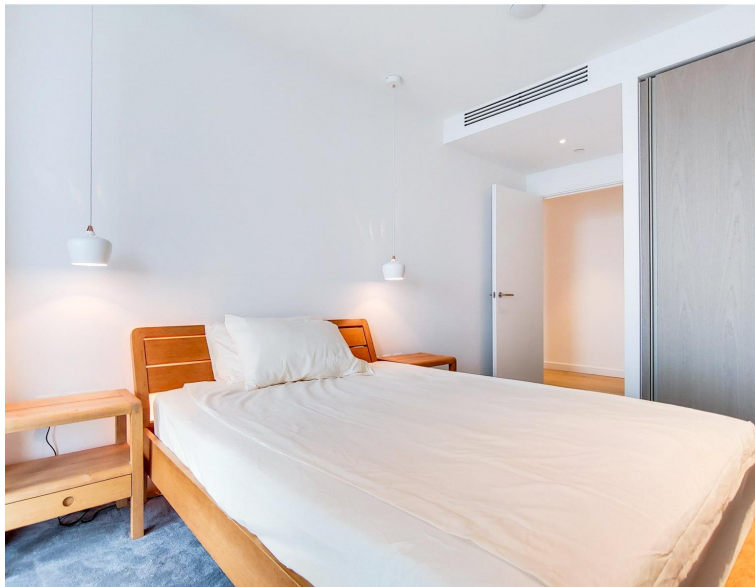
Price £875 per week - Furnished











## Description

JLL are delighted to present a spacious 2 bedroom apartment in the sought after Atlas Building, Old Street, EC1.

Offered fully furnished, this luxurious 2 bedroom apartment is situated on the 18th floor and boasts a spacious reception area with fully fitted contemporary kitchen, large balcony with stunning views towards West London, 2 double bedrooms each with large fitted wardrobes, 2 luxury bathrooms with porcelain finish, wood flooring and comfort cooling / heating.

The Atlas Building is next to Old Street station (0.1 mile) and ideally situated for the City, Hoxton, Shoreditch and Angel. The development offers top of the range amenities which includes pool, spa, gymnasium, private cinema room, resident's only business lounge and 24 hour concierge.

We understand that cooling / heating is delivered via a communal system for which separate charges apply.

Rent is payable on a monthly basis and you may be required to pay more than a month's rent in advance, depending on your circumstances. You will be required to pay a 1 week holding deposit following a successful offer. Utility bills, council tax, telephone line and broadband are not included in the rent. As w

- 2 Bedrooms
- 2 Bathrooms
- Large balcony
- On-site leisure facilities including pool, spa and cinema
- 24 hour concierge
- 0.1 miles from Old Street Station
- Approx. 833 sq ft (77.5 sq m)
- Furnished
- EPC: B
- Council tax: Band F

# Floorplan

833 sq ft | 77 sq m



City Road, EC1V

CAPTURE DATE  
14/08/2019

LASER SCAN POINTS  
39,962,513

GROSS INTERNAL AREA  
77.5 Sqm / 833.7 Sqft



— Eighteenth Floor

 GROSS INTERNAL AREA  
The footprint of the property  
77.5 Sqm / 833.7 Sqft

 NET AREA (INTERNAL)  
Excludes walls and external features  
74.6 Sqm / 803.3 Sqft

 EXTERNAL STRUCTURAL FEATURES  
Balconies, terraces, verandas etc.  
7.1 Sqm / 75.9 Sqft

 RESTRICTED HEAD HEIGHT  
Limited use area under 1.5m  
0.0 Sqm / 0.0 Sqft



Spec floor plans are produced in accordance with the Royal Institution of Chartered Surveyors' Property Measurement Standards. Plots and gardens are illustrative only and are excluded from all area calculations. Due to rounding, numbers may not add up precisely.



IPMS 3B RESIDENTIAL  
84.5 Sqm / 909.7 Sqft

IPMS 3C RESIDENTIAL  
81.7 Sqm / 879.2 Sqft

SPEC ID  
5d527ea87effb00a1ba8ec18

City  
25 Walbrook The Walbrook  
Building,  
London EC4N 8AF  
+4420 7337 4000

*Urban living, your way.*

[jll.co.uk/residential](http://jll.co.uk/residential)

© 2019 Jones Lang LaSalle IP, Inc. All rights reserved. All information contained herein is from sources deemed reliable; however, no representation or warranty is made to the accuracy thereof.

