

# One Tower Bridge, London SE1

Price £995 per week - Furnished









## Description

A stunning 2 bedroom apartment located in this prestigious development One Tower Bridge.

The apartment boasts a spacious open plan reception with private balcony, master bedroom with dressing area, en suite bathroom including additional shower and access to balcony, second double bedroom with fitted wardrobes, contemporary shower room.

The development offers exceptional amenities, including 24 hour concierge, on site gym, swimming pool and spa.

Located next to Tower Bridge, the development is 0.7 miles from London Bridge station (zone 1) and a short walk (approximately 0.5 miles) into the City of London.

We understand that cooling / heating is delivered via a communal system for which separate charges apply.

Rent is payable on a monthly basis and you may be required to pay more than a month's rent in advance, depending on your circumstances. You will be required to pay a 1 week holding deposit following a successful offer. Utility bills, council tax, telephone line and broadband are not included in the rent. As w

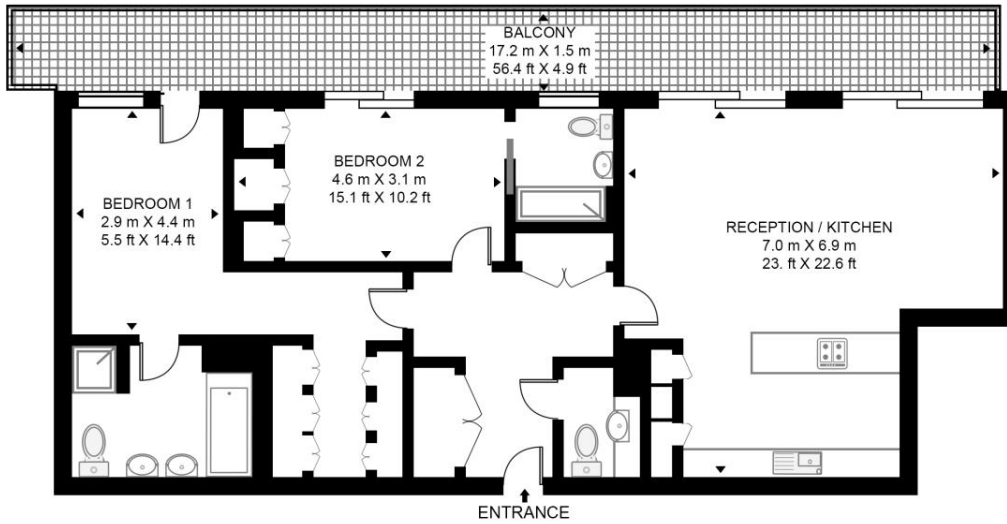
- 2 Bedrooms
- 2 Bathrooms
- Balcony
- 24 Hour concierge
- Gym
- Approx. 1214 sq ft (112.8 sq m)
- 0.7 miles from London Bridge station
- EPC: C
- Council tax: Band H
- Deposit amount: £5,970.00

# Floorplan

1,214 sq ft | 113 sq m

## BALMORAL HOUSE ONE TOWER BRIDGE

APPROXIMATE GROSS INTERNAL FLOOR AREA 1214 SQ.FT (112.8 SQ.M)



TENTH FLOOR



This floor plan has been defined by the RICS Code of Measurement. This floor plan and all others are for approximate representative purposes only and upon usage is agreed to as such by the client.  
WWW: [hdvirtualart.com](http://hdvirtualart.com) | TEL: 0203.974.1567 | EMAIL: [info@hdvirtualart.com](mailto:info@hdvirtualart.com)

City  
25 Walbrook The Walbrook  
Building,  
London EC4N 8AF  
+4420 7337 4000

*Urban living, your way.*

[jll.co.uk/residential](http://jll.co.uk/residential)

© 2019 Jones Lang LaSalle IP, Inc. All rights reserved. All information contained herein is from sources deemed reliable; however, no representation or warranty is made to the accuracy thereof.

