



Packington Square, London N1

Price £570 per week - Furnished







Description

A contemporary 1 bedroom apartment in the popular Packington Square, situated in the heart of Angel, Islington.

Offered fully furnished, this well sized 1 bedroom apartment boasts approximately 532 sq. ft of living space. The property comprises 1 double bedroom with fitted wardrobes, open plan reception area with access to private balcony facing the landscaped courtyard, fully fitted kitchen with integrated Siemens appliances, contemporary bathroom with porcelain finish, and wood flooring.

Packington Square boasts a fantastic location in Angel, Islington. The Regents Canal is moments away and Upper Street is just 0.3 miles from the development. Angel station, Zone 1 is 0.7 miles away.

We understand that cooling / heating is delivered via a communal system for which separate charges apply.

Rent is payable on a monthly basis and you may be required to pay more than a month's rent in advance, depending on your circumstances. You will be required to pay a 1 week holding deposit following a successful offer. Utility bills, council tax, telephone line and broadband are not included in the rent. As w

- 1 Bedroom
- 1 Bathroom
- 4th floor
- Open-plan reception
- Balcony
- Wood flooring
- 0.7 miles from Angel Station
- Approx. 543.80 sq ft (50.52 sq m)
- Furnished
- EPC : B

Floorplan

544 sq ft | 51 sq m

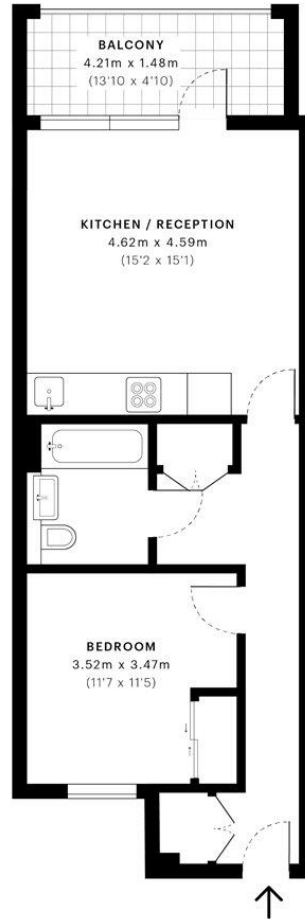


Ann Street, N1

CAPTURE DATE
12/12/2018

LASER SCAN POINTS
28,139,285

GROSS INTERNAL AREA
50.52 Sqm / 543.80 Sqft



Fourth Floor

 GROSS INTERNAL AREA
The footprint of the property
50.52 Sqm / 543.80 Sqft

 NET AREA (INTERNAL)
Excludes walls and external features
49.46 Sqm / 532.39 Sqft

 EXTERNAL STRUCTURAL FEATURES
Balconies, terraces, verandas etc.
5.75 Sqm / 61.89 Sqft

 RESTRICTED HEAD HEIGHT
Limited use area under 1.5m
0.00 Sqm / 0.00 Sqft



Spec floor plans are produced in accordance with Royal Institution of Chartered Surveyors Property Measurement Standards. If you intend to rely on any measurement in a transaction you should perform your own checks. Plot/Gardens illustrative only and excluded from all area calculations.



IPMS 3B RESIDENTIAL
56.91 Sqm / 612.58 Sqft

IPMS 3C RESIDENTIAL
55.86 Sqm / 601.28 Sqft

SPEC ID
5c0e48d499993070333c5

City
25 Walbrook The Walbrook
Building,
London EC4N 8AF
+4420 7337 4000

Urban living, your way.

jll.co.uk/residential

© 2019 Jones Lang LaSalle IP, Inc. All rights reserved. All information contained herein is from sources deemed reliable; however, no representation or warranty is made to the accuracy thereof.

