



# Marshgate Lane, London E15

Asking price £485,000 Leasehold







## Description

Exclusive to the market becomes available this ultra modern 1 double bedroom apartment spanning close to 600 sq. ft, situated on the 6th floor of the Recently built and popular Stratford Mill development.

Comprising entrance hall with ample storage, modern and fully fitted bathroom suite, large double bedroom with built in storage, high end specification kitchen and large double aspect living area leading to private balcony.

Stratford Mill has become an incredibly popular new neighbourhood in East London, positioned on the canal and close to the Queen Elizabeth Olympic Park. With excellent transport links it's easy to get from Stratford to most places in London. Pudding Mill Lane station is a 2 minute walk away from Stratford Mill which has connections to Canary Wharf and Lewisham via the DLR line. Stratford station is a 15 minute walk away, with direct connection to London Bridge, Liverpool Street, Bank and London City.

- One double bedroom
- Ample storage throughout
- Secure development
- High end specification
- Walking distance to Pudding Mill Station
- Large balcony
- Approx. 586 sq.ft (54.4 sq. m)
- 6th Floor
- Leasehold

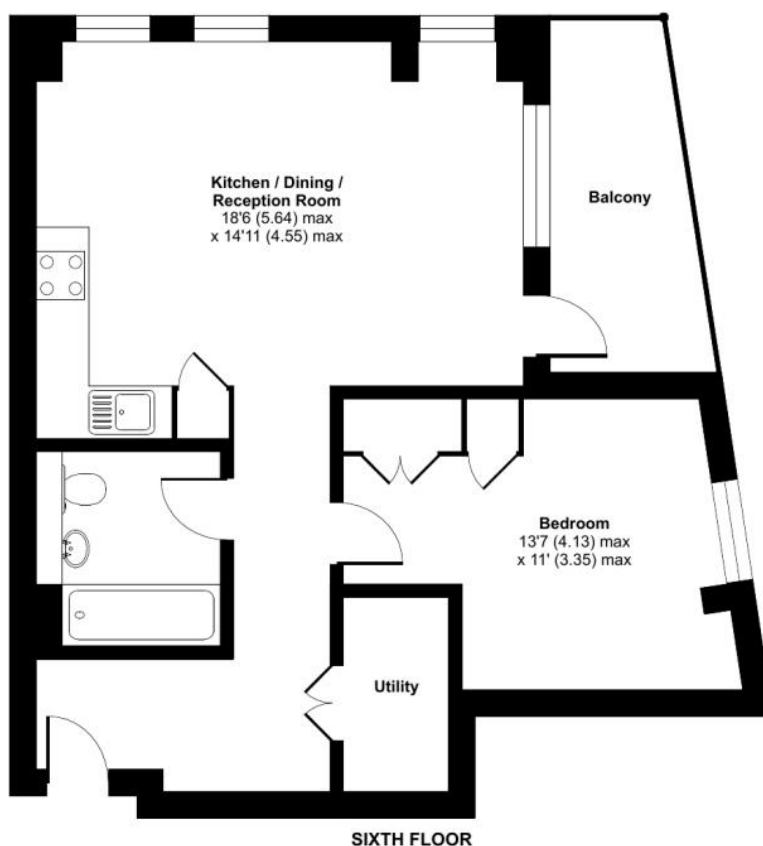
# Floorplan

586 sq ft | 54 sq m

## Marshgate Lane, London, E15

Approximate Internal Area = 586 sq ft / 54.4 sq m

For identification only - Not to scale



Floor plan produced in accordance with RICS Property Measurement Standards incorporating International Property Measurement Standards (IPMS2 Residential). © ncthecom 2024. Produced for JLL Residential. REF: 1091900

Stratford  
5 Station Street,  
London E15 1DA  
+4420 3147 1500  
salesstratford@eu.jll.com

*Urban living, your way.*

[jll.co.uk/residential](http://jll.co.uk/residential)

© 2019 Jones Lang LaSalle IP, Inc. All rights reserved. All information contained herein is from sources deemed reliable; however, no representation or warranty is made to the accuracy thereof.

