



## Chelsea Manor Street, London SW3

Price £595 per week - Furnished, Unfurnished







# Description

Please note this property is offered on an unfurnished basis only, any furniture shown in the pictures is not included.

A gorgeous one-bedroom flat in this sought after portered block on a quiet road in Chelsea, moments away from the Kings Road and St Luke's Gardens.

This spacious second floor apartment (with lift) captures lots of natural light and has lots of built in storage to maximise space. Walking distance to Sloane Square and South Kensington, the apartment boasts with great transport links and just round the corner from a hosts of boutique shops and groceries stores.

Rent is payable on a monthly basis and you may be required to pay more than a month's rent in advance, depending on your circumstances. You will be required to pay a 1 week holding deposit following a successful offer. Utility bills, council tax, telephone line and broadband are not included in the rent. As well as paying the rent, you may also be required to make some additional permitted payments. If your tenancy does not qualify as an AST, additional fees may apply. Please visit [jll.co.uk/fees](http://jll.co.uk/fees) for details of fees which may be payable when renting a property.

- Reception room
- One bedroom
- Kitchen
- Bathroom
- Second floor
- Lift
- Concierge
- Furnished/ Unfurnished
- Approx. 474 sq ft (44 sq m)
- EPC: C

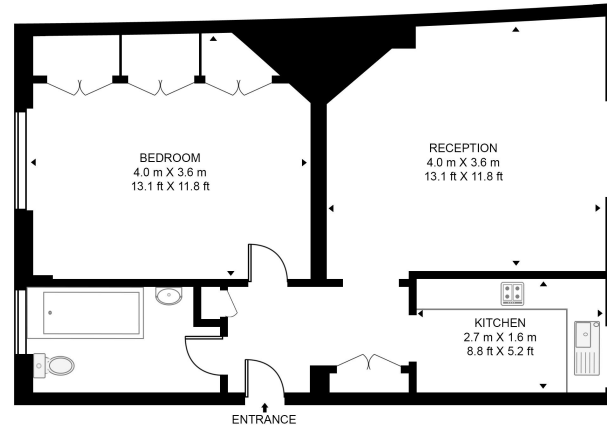


# Floorplan

474 sq ft | 44 sq m

## DAVER COURT

APPROXIMATE GROSS INTERNAL FLOOR AREA 474 SQ.FT (44 SQ.M)



## SECOND FLOOR



This floor plan has been defined by the RICS Code of Measurement. This floor plan and all others are for approximate representative purposes only and upon usage is agreed to as such by the client.  
WWW: [hdvirtualart.com](http://hdvirtualart.com) | TEL: 0203.974.1567 | EMAIL: [info@hdvirtualart.com](mailto:info@hdvirtualart.com)

Chelsea  
2 Cale Street,  
London SW3 3QU  
+4420 7399 5010  
[lettingschelsea@eu.jll.com](mailto:lettingschelsea@eu.jll.com)

*Urban living, your way.*

[jll.co.uk/residential](http://jll.co.uk/residential)

© 2019 Jones Lang LaSalle IP, Inc. All rights reserved. All information contained herein is from sources deemed reliable; however, no representation or warranty is made to the accuracy thereof.

