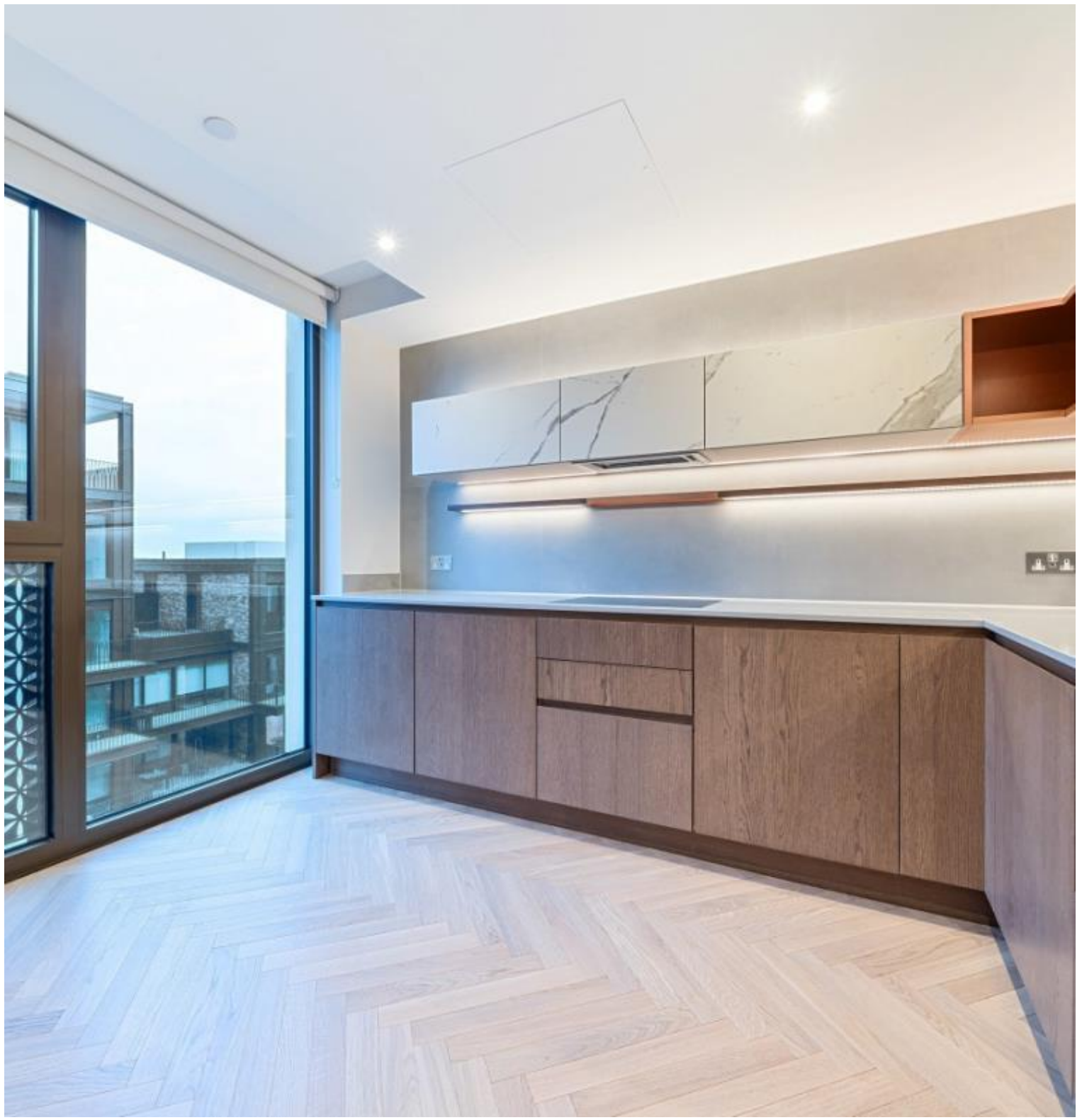




Parkland Walk, London SW6

Price £995 per week - Unfurnished







Description

A brand new spacious two-bedroom apartment in the sought after Kings Road Park development. This beautiful apartment benefits from loads of built-in storage, a state-of-the-art kitchen and a spacious balcony overlooking the communal gardens. Additionally, the development boasts fantastic on-site amenities which include 24 hour concierge, swimming pool, gymnasium, cinema rooms, private kitchen area, games room and capacious residents' lounge.

As well as paying the rent, you may also be required to make some additional permitted payments. If your tenancy does not qualify as an AST, additional fees may apply. Please visit jll.co.uk/fees for details of fees which may be payable when renting a property.

- 25m swimming pool
- Vitality pool
- Steam and sauna rooms
- Golf simulator
- Games room
- Gymnasium
- Fitness studios
- Treatment rooms
- 24 hour concierge
- Private dining room

Floorplan

sq ft | sq m

Chelsea & Knightsbridge
20 Water Street,
London E14 5GX
+4420 7306 1600
lettingsknightsbridge@eu.jll.co

Urban living, your way.

jll.co.uk/residential

© 2019 Jones Lang LaSalle IP, Inc. All rights reserved. All information contained herein is from sources deemed reliable; however, no representation or warranty is made to the accuracy thereof.

