



## Goldsmiths Row, London E2

Price £575 per week - Furnished











## Description

A stunning 1 bedroom apartment in the sought after Mettle & Poise, located in the heart of Shoreditch.

This spacious 1 bedroom apartment is situated on the 3rd floor and offers approximately 578 sq ft. This fully furnished apartment comprises of a living area with open plan fitted kitchen and integrated Siemens appliances, large West facing balcony with views of Hackney City farm, large bedroom with fitted wardrobes, contemporary bathroom, Amtico flooring and excellent storage space.

The development boasts an excellent location, next to Hackney City farm and Haggerston Park and close to London Fields. Mettle and Poise is also well connected for the City and is a short walk (0.4 miles) from Hoxton Overground station.

Rent is payable on a monthly basis and you may be required to pay more than a month's rent in advance, depending on your circumstances. You will be required to pay a 1 week holding deposit following a successful offer. Utility bills, council tax, telephone line and broadband are not included in the rent. As well as paying the rent, you may also be required to make some additional permitted payments. If your tenancy does not qualify as an AST, additional fees may apply. Please visit [jll.co](http://jll.co).

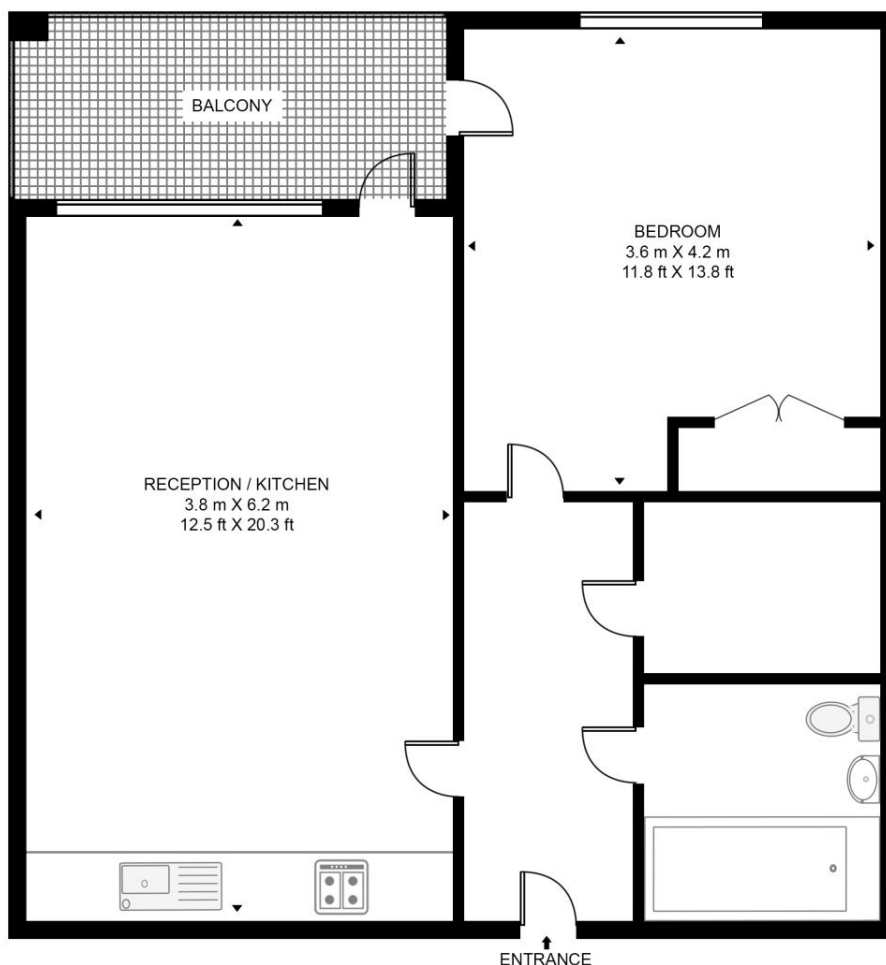
- 1 Bedroom
- 1 Bathroom
- 3rd floor
- Approx. 575 sq ft (53.4 sq m)
- 3rd floor
- Furnished
- Siemens appliances
- Approx. 0.4 miles from Hoxton Overground station
- EPC: B
- Council tax: Band C

# Floorplan

575 sq ft | 53 sq m

## GRACE ALLEN COURT, 16 GOLDSMITHS ROW

APPROXIMATE GROSS INTERNAL FLOOR AREA 575 SQ.FT (53.4 SQ.M)



THIRD FLOOR



This floor plan has been defined by the RICS Code of Measurement. This floor plan and all others are for approximate representative purposes only and upon usage is agreed to as such by the client.

WWW: [hdvirtualart.com](http://hdvirtualart.com) | TEL: 0203.974.1567 | EMAIL: [info@hdvirtualart.com](mailto:info@hdvirtualart.com)

City  
25 Walbrook The Walbrook  
Building,  
London EC4N 8AF  
+4420 7337 4000

*Urban living, your way.*

[jll.co.uk/residential](http://jll.co.uk/residential)

© 2019 Jones Lang LaSalle IP, Inc. All rights reserved. All information contained herein is from sources deemed reliable; however, no representation or warranty is made to the accuracy thereof.

