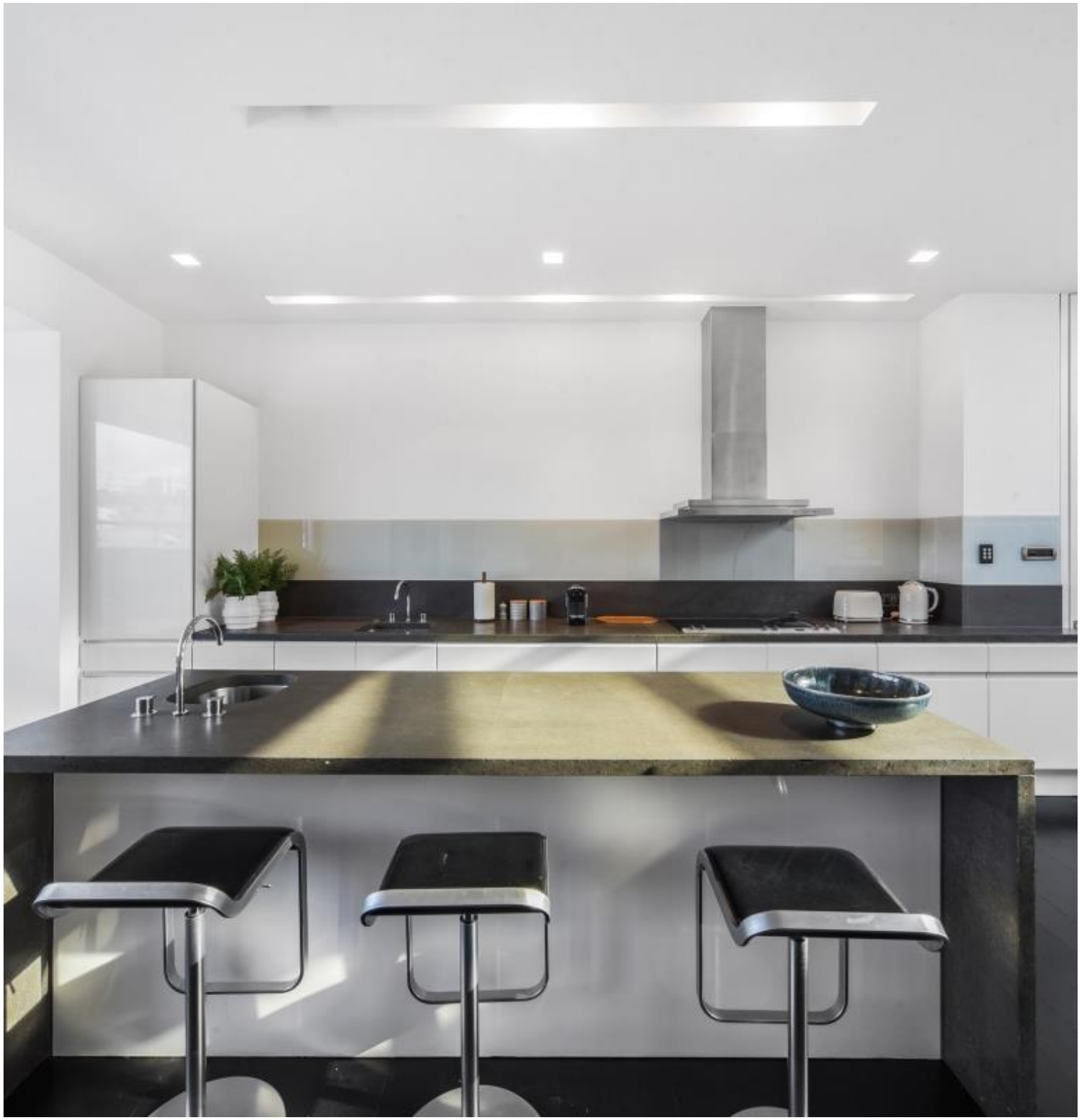




## Market Place, London W1W

Asking price £4,750,000 Leasehold









## Description

Accessed via Market Place, a quiet enclave of shops and cafes tucked behind Oxford Street.

The internal spaces are arranged in a largely open plan, with large windows that frame incredible views across central London and draw in wonderful levels of natural light. This illuminates the kitchen, living and dining rooms. Granite worktop counters delineate the kitchen area and create a stylish breakfast bar, with an integrated Bosch induction hob and oven; a mirrored panel further promotes the flow of light across this section of the plan. The living and dining areas adjoin and have wide format engineered oak boards underfoot. Adjoining the main spacious bedroom is a large en suite bathroom, which has twin sinks, and a bath. To one side of the dining area is another large double bedroom with en suite bathroom.

The flat benefits from access to an incredible wrap around terrace, which is not demised to the penthouse.

Orwell Studios is perfectly located for the very best of central London. Soho is less than five minutes' walk from the front door and is home to a vast array of shops, restaurants, bars and galleries. Mayfair is slightly further afield and contains some of

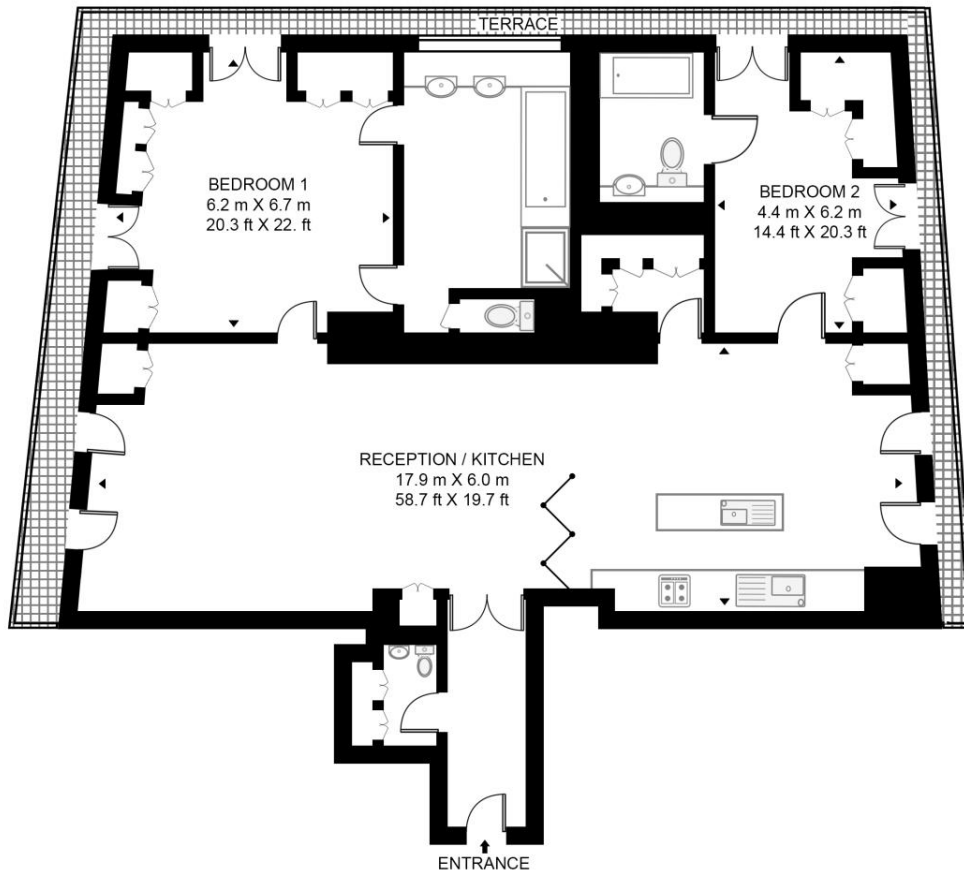
- Penthouse
- Access to Wrap Around Terrace
- Measuring 216 sqm / 2,325 sqft
- Amazing Space for Entertaining
- Open-Plan Kitchen
- Two En Suite Bedrooms
- Oak Wood Flooring
- Council Tax Band H
- Deposit amount: £16,500.00

# Floorplan

2,325 sq ft | 216 sq m

## ORWELL STUDIOS, 24 MARKET PLACE

APPROXIMATE GROSS INTERNAL FLOOR AREA 2325 SQ.FT (216 SQ.M)



FIFTH FLOOR



This floor plan has been defined by the RICS Code of Measurement. This floor plan and all others are for approximate representative purposes only and upon usage is agreed to as such by the client.  
WWW: [hdvirtualart.com](http://hdvirtualart.com) | TEL: 0203.974.1567 | EMAIL: [info@hdvirtualart.com](mailto:info@hdvirtualart.com)

Mayfair and Marylebone  
13a St George Street,  
London W1S 2FQ  
+44 207 399 5550

*Urban living, your way.*

[jll.co.uk/residential](http://jll.co.uk/residential)

© 2019 Jones Lang LaSalle IP, Inc. All rights reserved. All information contained herein is from sources deemed reliable; however, no representation or warranty is made to the accuracy thereof.

