



International Way, London E20

Asking price £660,000 Leasehold







Description

Fantastic opportunity to purchase this apartment within the popular, large City-facing development Manhattan Loft Apartments E20. Manhattan Loft Apartments is Europe's most ambitious residential tower from the legendary Harry Handelsman. Each apartment has been finished with a custom made kitchen and exquisitely crafted intelligent storage spaces with engineered timber floors throughout, offering the ultimate in loft-living. The tower's unique structure is propelled by a vision of embracing green space and fresh air to develop a dynamic upward living community. London's historic garden squares have been re-imagined for the 21st century and are carved into the building at 95, 280 and 400 feet, delivering breath-taking panoramic views. Situated on the eighteenth floor and comprising of approximately 654 square feet. The property boasts an open-plan kitchen/living area with integrated appliances, floor-to-ceiling-windows allowing plenty of light, double bedroom with a separate bathroom, plus separate study/den. The property is a short walk to Stratford Underground Station and the iconic Olympic Park. Residents further benefit from a concierge service, residential gymnasium, lift access, views overlooking communal gardens, and is close to local amenities such as Westfield's Stratford City.** Please note that this flat is a two bedroom, the second bedroom is a study as per the floor plan.

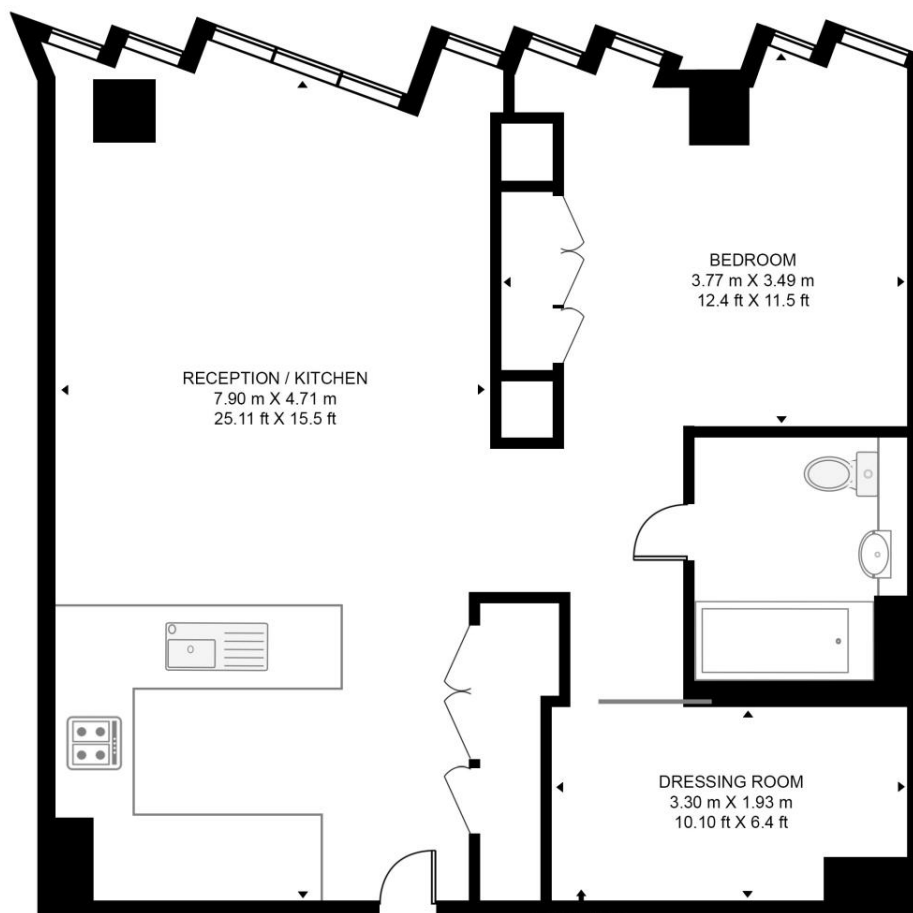
- City-facing development
- Concierge service
- Residential gymnasium
- Lift access
- Views overlooking communal gardens
- Separate study/den, 1.5 bedrooms
- Close to Stratford Underground Station
- Tenure: Leasehold
- EPC Rating: B

Floorplan

654 sq ft | 61 sq m

MANHATTEN LOFT APARTMENTS

APPROXIMATE GROSS INTERNAL FLOOR AREA 654.13 SQ.FT (60.77 SQ.M)



HDVA

This floor plan has been defined by the RICS Code of Measurement. This floor plan and all others are for approximate representative purposes only and upon usage is agreed to as such by the client.

WWW: hdvirtualart.com | TEL: 0203.974.1567 | EMAIL: info@hdvirtualart.com

Stratford
5 Station Street,
London E15 1DA
+4420 3147 1500
salesstratford@eu.jll.com

Urban living, your way.

jll.co.uk/residential

© 2019 Jones Lang LaSalle IP, Inc. All rights reserved. All information contained herein is from sources deemed reliable; however, no representation or warranty is made to the accuracy thereof.

