



## Egerton Gardens, London SW3

Price £1,900 per week - Unfurnished











## Description

A spacious and well presented first floor apartment (no lift) with its own entrance in this prime location in the heart of Knightsbridge. The property consists of master bedroom with en suite bathroom and balcony, second double bedroom with en suite bathroom, third double bedroom, one shower room, a large reception room and a fully fitted kitchen.

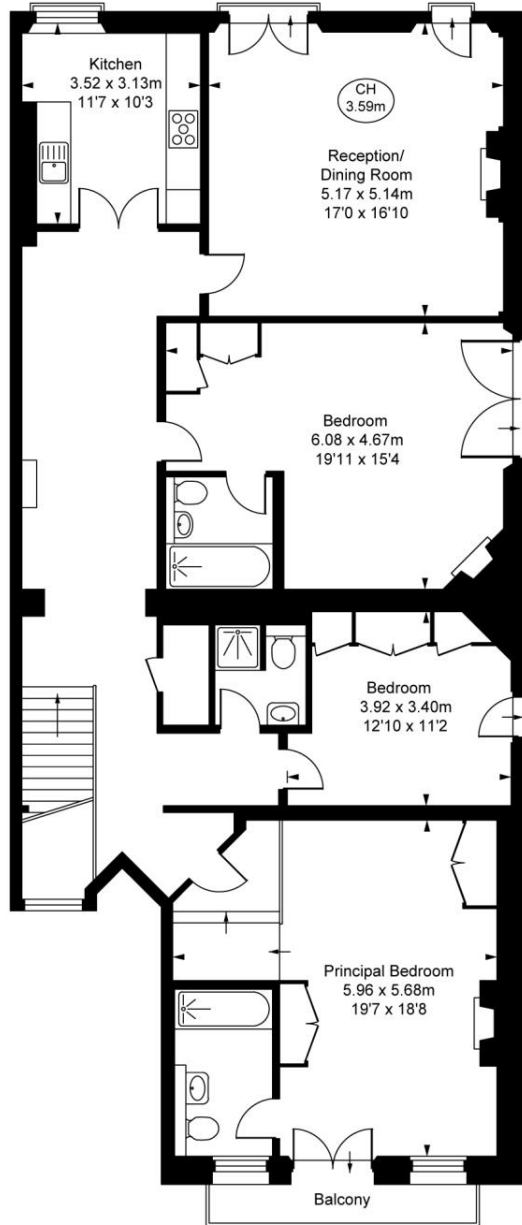
This wonderful flat offers high ceilings, wooden flooring in the reception room and it is neutrally decorated throughout. It is available on an unfurnished basis. Egerton Gardens is ideally placed for the many shopping and transport amenities of Knightsbridge and South Kensington.

Rent is payable on a monthly basis and you may be required to pay more than a month's rent in advance, depending on your circumstances. You will be required to pay a 1 week holding deposit following a successful offer. Utility bills, council tax, telephone line and broadband are not included in the rent. As well as paying the rent, you may also be required to make some additional permitted payments. If your tenancy does not qualify as an AST, additional fees may apply. Please visit [jll.co.uk/fees](http://jll.co.uk/fees) for details of fees which may be payable when renting a property.

- 3 Double bedrooms
- 2 Bathrooms (en suite)
- 1 Shower room
- Reception room
- Fully fitted kitchen
- First floor
- Balcony
- Approx. 1,765 sq ft (164 sq m)
- Unfurnished
- EPC: D

# Floorplan

1,765 sq ft | 164 sq m



Egerton Gardens, SW3  
Approximate Gross Internal Area  
166.32 sq m / 1,790 sq ft  
( CH = Ceiling Heights )



First Floor  
Approximate Gross Internal Area  
154.30 sq m / 1,661 sq ft



Ground Floor  
Approximate Gross Internal Area  
12.01 sq m / 129 sq ft

This plan is not to scale. It is for guidance and not for valuation purposes.  
All measurements and areas are approximate only, and have been prepared in accordance with the current edition of the RICS Code of Measuring Practice.  
© Fulham Performance

Knightsbridge  
Wood Wharf,  
London E14 5GX  
+4420 7306 1600  
lettingsknightsbridge@eu.jll.co

*Urban living, your way.*

[jll.co.uk/residential](http://jll.co.uk/residential)

© 2019 Jones Lang LaSalle IP, Inc. All rights reserved. All information contained herein is from sources deemed reliable; however, no representation or warranty is made to the accuracy thereof.

