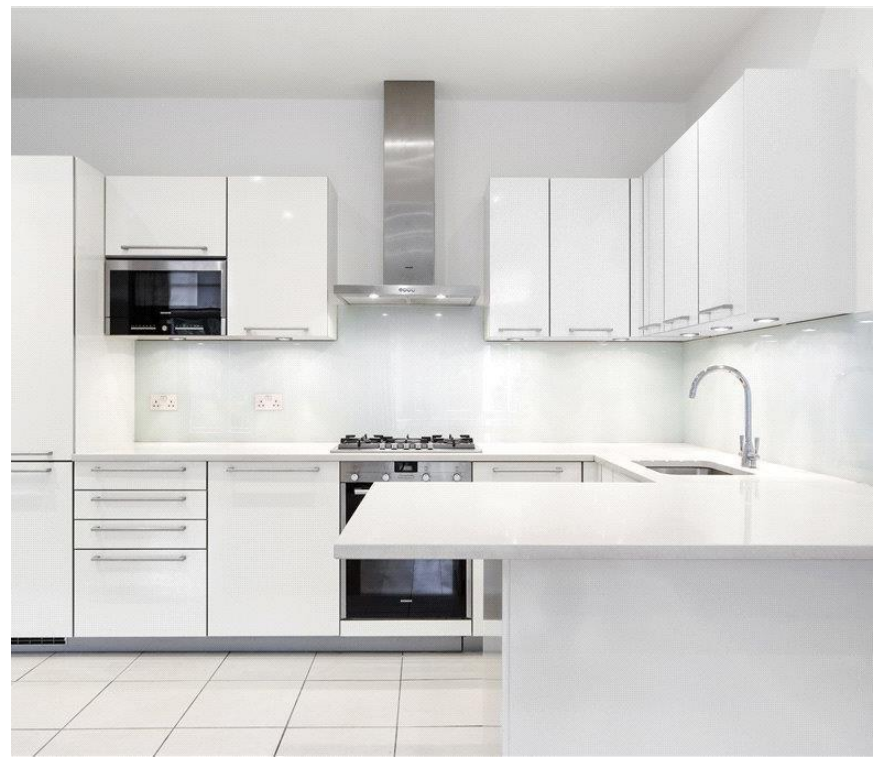




## Egerton Terrace, London SW3

Price £1,000 per week - Unfurnished







# Description

A wonderful first floor flat (with lift) situated in the heart of Knightsbridge. The property consists of master bedroom with en suite bathroom, second double bedroom, one shower room, reception room and a fully fitted, open plan kitchen.

The flat benefits from wooden flooring in the reception room and comfort cooling and it is neutrally decorated throughout. Egerton Terrace is conveniently located for the many transport and shopping amenities of both Knightsbridge and South Kensington.

Rent is payable on a monthly basis and you may be required to pay more than a month's rent in advance, depending on your circumstances. You will be required to pay a 1 week holding deposit following a successful offer. Utility bills, council tax, telephone line and broadband are not included in the rent. As well as paying the rent, you may also be required to make some additional permitted payments. If your tenancy does not qualify as an AST, additional fees may apply. Please visit [jll.co.uk/fees](http://jll.co.uk/fees) for details of fees which may be payable when renting a property.

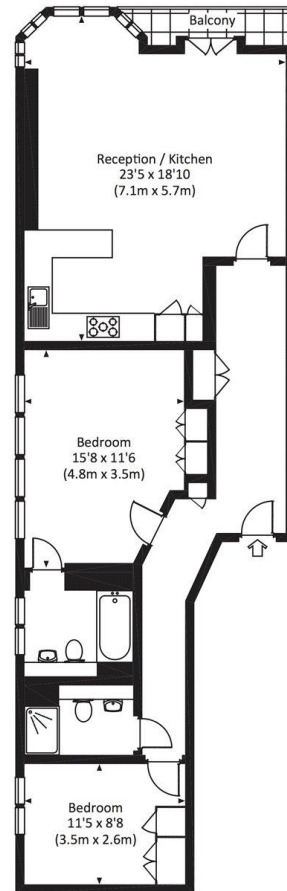
- 2 Double bedrooms
- 1 Bathroom (en suite)
- 1 Shower room
- Reception room
- Open plan kitchen
- First floor
- Lift
- Approx. 972 sq ft (90 sq m)
- Furnished
- EPC: D




# Floorplan

972 sq ft | 90 sq m

Approx. gross internal area  
972 Sq Ft. / 90.3 Sq M.



FIRST FLOOR

 All measurements have been made in accordance with RICS Code of Measuring Practice which are approximate only and only for illustrative purposes. For the avoidance of doubt, Dowling Jones Design shall not be liable for any reliance on these measurements. © 2017 www.dowlingjones.com 020 7610 9933

Knightsbridge  
Wood Wharf,  
London E14 5GX  
+4420 7306 1600  
lettingsknightsbridge@eu.jll.co

*Urban living, your way.*

[jll.co.uk/residential](http://jll.co.uk/residential)

© 2019 Jones Lang LaSalle IP, Inc. All rights reserved. All information contained herein is from sources deemed reliable; however, no representation or warranty is made to the accuracy thereof.

