



Bull Inn Court, London WC2R

Asking price £1,595,000 Leasehold







Description

Warehouse style loft apartment, tucked away in the heart of Covent Garden, moments from the famous Piazza sits this well-proportioned apartment comprising of; a generous open plan reception room with space to accommodate a dining area and a fully integrated stylish kitchen. There are two good sized bedrooms both benefit from built in wardrobes and one with a modern luxury en-suite shower room, there is also a further fully fitted luxury guest bathroom.

This immaculate apartment is finished to an exceptional standard, offers an excellent living and entertaining space and features; warehouse style windows, plentiful storage, lift access and a concierge service. The listed frontage of the 19th Century building has been tastefully retained whilst a contemporary interior has been added to prolong its sense of heritage.

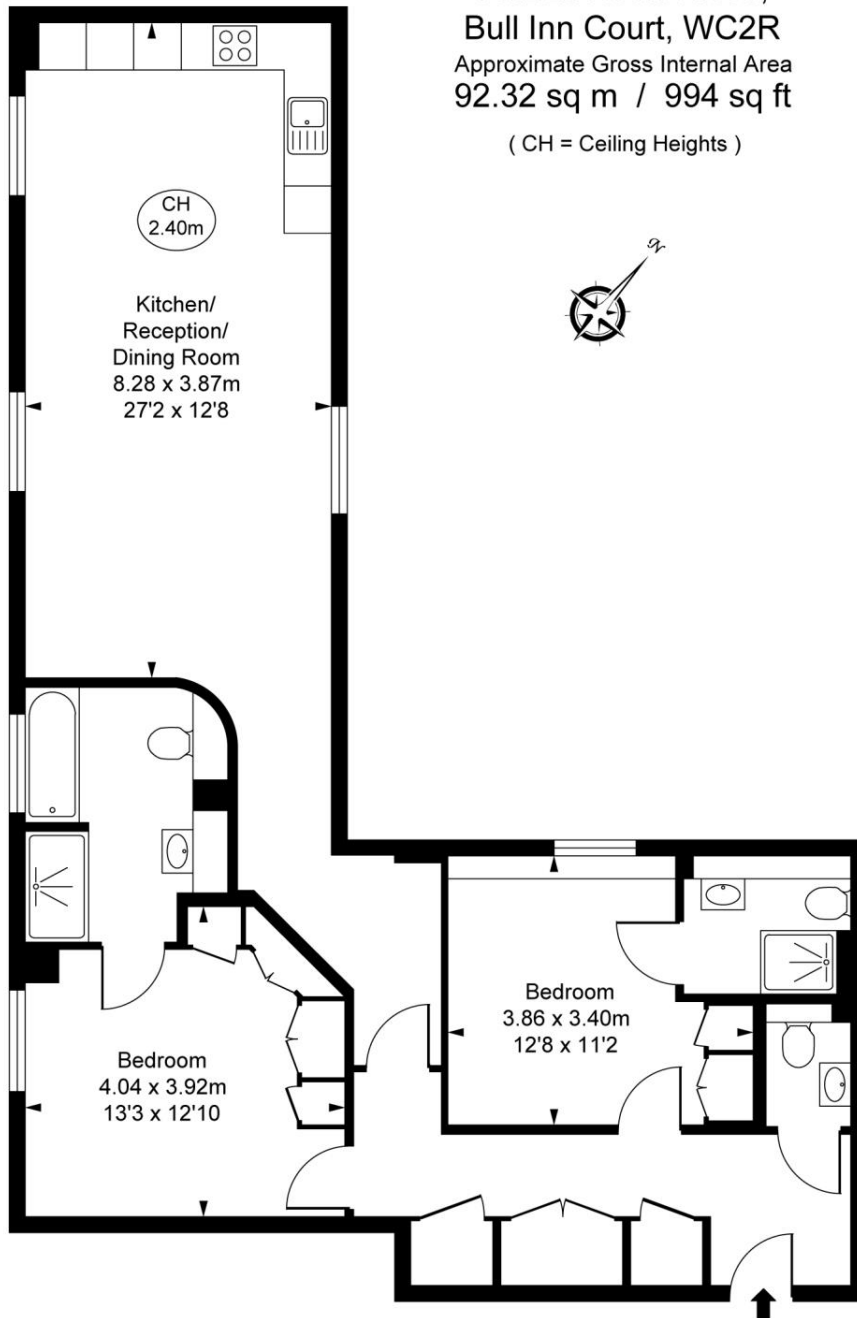
Bull Inn Court connects the Strand to one of Covent Garden's premier streets, Maiden Lane and is situated just south of the Piazza and is set amongst Covent Garden's diverse offerings of Theatres, high end retailers, fashionable shops, bars, cafés and exquisite restaurants with Covent Garden Market, the Royal Opera House and National Gallery all close by. Charing Cross (0.2 miles), Covent Garden (0.3 miles) and Embankment (0.3 m

- Warehouse conversion
- Porter
- Lift
- Covent Garden

Floorplan

994 sq ft | 92 sq m

Piazza Residences,
Bull Inn Court, WC2R
Approximate Gross Internal Area
92.32 sq m / 994 sq ft
(CH = Ceiling Heights)



Second Floor

This plan is not to scale. It is for guidance and not for valuation purposes.
All measurements and areas are approximate only, and have been prepared in accordance with the current edition of the RICS Code of Measuring Practice.
© Fulham Performance

Mayfair and Marylebone
13a St George Street,
London W1S 2FQ
+44 207 399 5550

Urban living, your way.

jll.co.uk/residential

© 2019 Jones Lang LaSalle IP, Inc. All rights reserved. All information contained herein is from sources deemed reliable; however, no representation or warranty is made to the accuracy thereof.

