

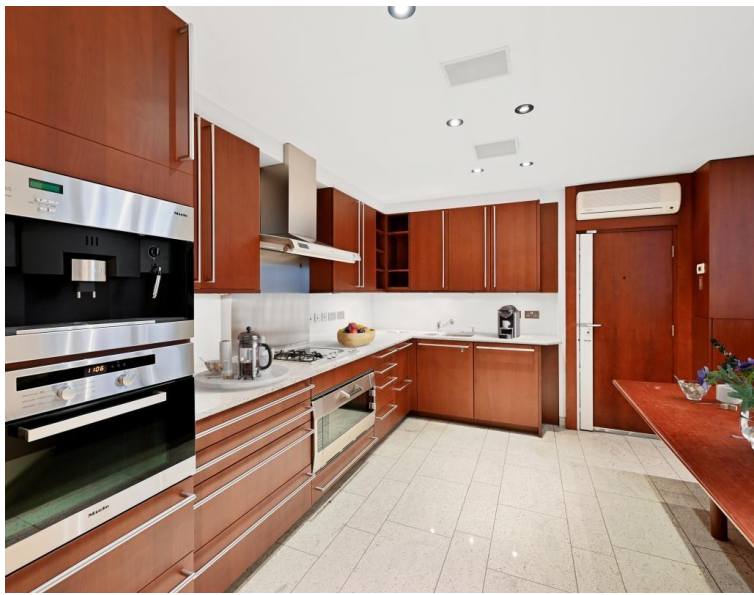


Lowndes Square, London SW1X

Price £2,995 per week - Unfurnished







Description

A luxurious 3-bedroom apartment situated on the third floor of a popular Knightsbridge garden square building. This beautifully designed apartment offers an exceptional living experience with its impressive features and prime location.

The property comprises a master bedroom with a walk-in wardrobe and en suite bathroom, two further bedrooms with an en suite bathroom, entrance hall, large reception room perfect for hosting gatherings or enjoying quality time with family and friends, high-end kitchen, media room, parquet flooring throughout which adds a touch of elegance and warmth to the interiors, creating a sophisticated atmosphere throughout.

Other notable features of this apartment include a lift for easy access to the 3rd floor and a dedicated porter to assist with any needs or concerns. The building is well-maintained and secure, offering peace of mind to residents.

One of the highlights of this apartment is its prime location within the prestigious garden square. Residents will enjoy the tranquillity and beauty of this green space, providing a refreshing escape from the bustling city. Lowndes Square is located just between Sloane Street and Belgravia and is walking distance to many popular retail shops including Harrod

- Master bedroom with a walk-in bedroom and en suite bathroom
- Further two bedrooms each with en suite bathroom
- Large reception room
- Media room
- Porter
- Lift
- Unfurnished
- Approx. 2,050 sq ft / 190 sq m
- EPC: C
- Council tax: Band H

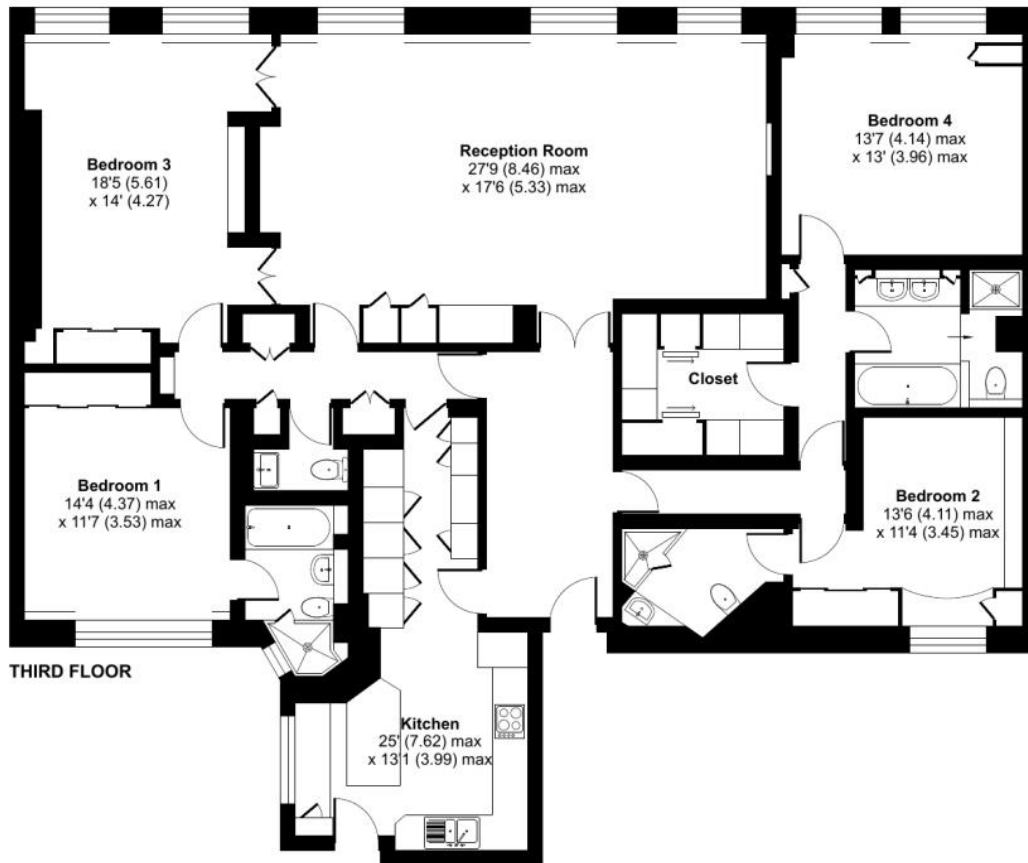
Floorplan

2,050 sq ft | 191 sq m

Lowndes Square, London, SW1X

Approximate Internal Area = 2050 sq ft / 190.4 sq m

For identification only - Not to scale



Floor plan produced in accordance with RICS Property Measurement Standards incorporating International Property Measurement Standards (IPMS2 Residential). © ncthecom 2024. Produced for JLL Residential. REF: 1092701

Knightsbridge
Wood Wharf,
London E14 5GX
+4420 7306 1600
lettingsknightsbridge@eu.jll.co

Urban living, your way.

jll.co.uk/residential

© 2019 Jones Lang LaSalle IP, Inc. All rights reserved. All information contained herein is from sources deemed reliable; however, no representation or warranty is made to the accuracy thereof.

