

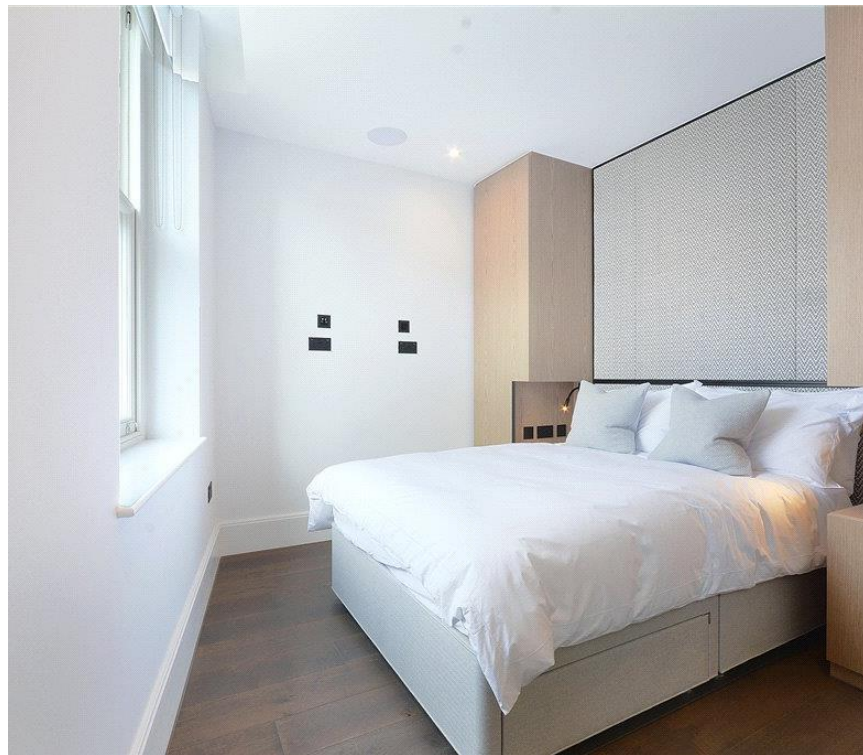


## Cresswell Gardens, London SW5

Price £595 per week - Furnished









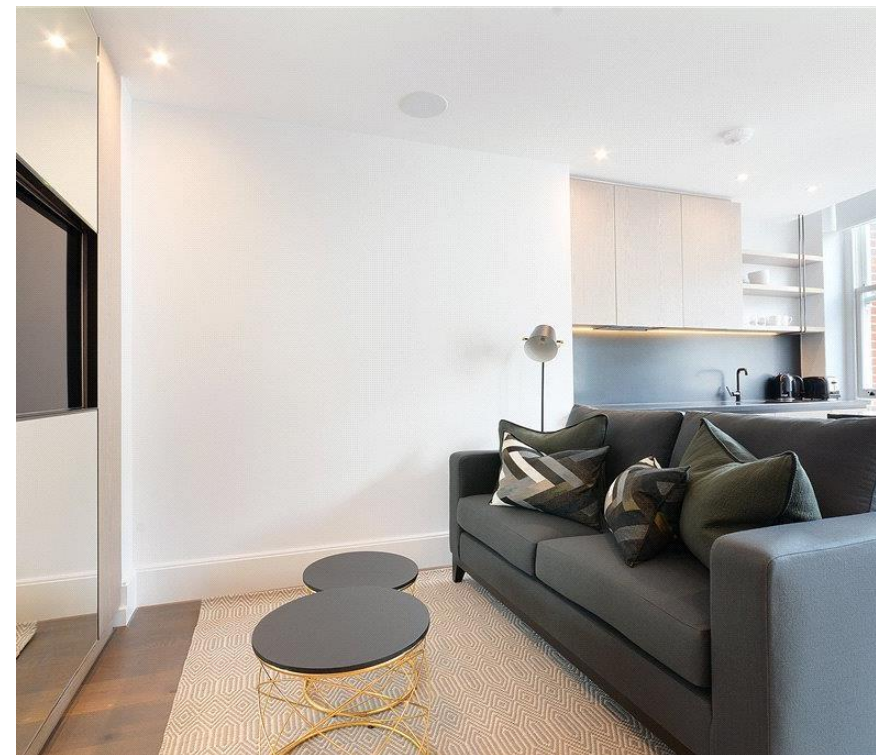
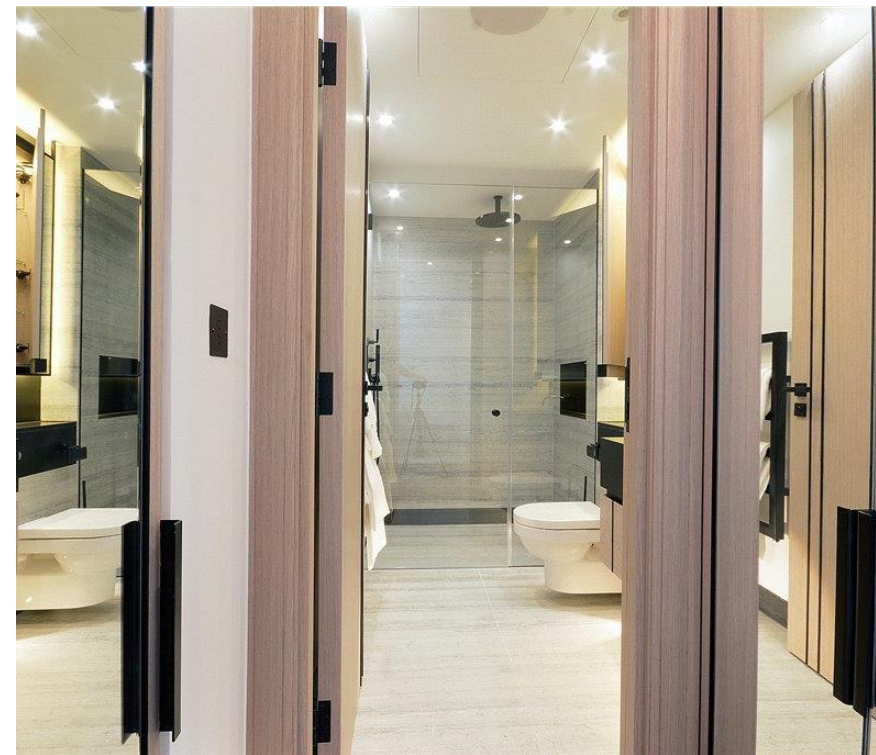
# Description

A beautifully presented second floor apartment, interior designed throughout by TH2 Designs. Accommodation comprises reception room and bedroom area, one shower room and open plan kitchen, fully fitted with Miele and Neff appliances. The apartment also benefits from comfort cooling and heating in the reception room and underfloor heating to shower room and hallway.

One Brompton is a stunning new development benefitting from a full concierge service, a lift to all floors, CCTV security system and audio visual entry system. The Old Brompton Road is ideally situated for the fashionable shops and restaurants of both Knightsbridge and Chelsea, as well as transport links across central London.

Rent is payable on a monthly basis and you may be required to pay more than a month's rent in advance, depending on your circumstances. You will be required to pay a 1 week holding deposit following a successful offer. Utility bills, council tax, telephone line and broadband are not included in the rent. As well as paying the rent, you may also be required to make some additional permitted payments. If your tenancy does not qualify as an AST, additional fees may apply. Please visit [jll.co.uk/fees](http://jll.co.uk/fees) for details of fees which may be payable when renting a property.

- Reception room/bedroom area
- 1 Shower room
- Open plan kitchen
- Second floor
- Lift
- 24 hour concierge
- Furnished throughout by TH2 designs
- Approx. 393 sq ft (36 sq m)
- EPC: C
- Council tax: Band E

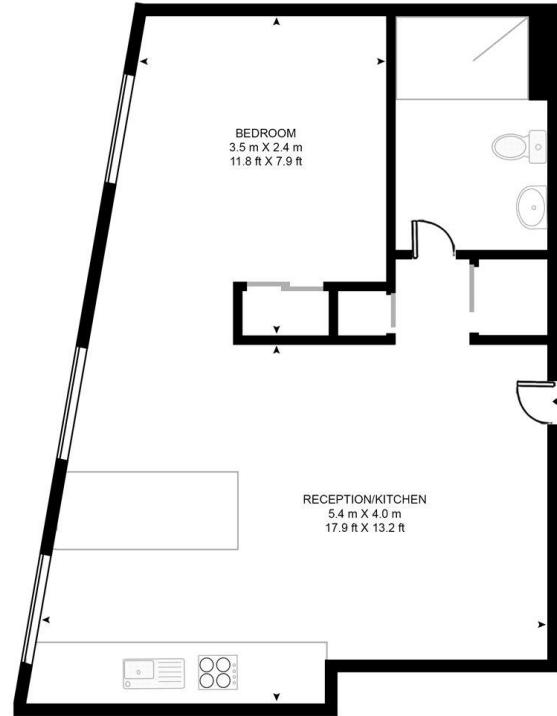


# Floorplan

393 sq ft | 37 sq m

## CRESSWELL GARDENS

APPROXIMATE GROSS INTERNAL FLOOR AREA 393 SQ.FT (36.5 SQ.M)



SECOND FLOOR

**HDVA**

This floor plan has been defined by the RICS Code of Measurement. This floor plan and all others are for approximate representative purposes only and upon usage is agreed to as such by the client.  
WWW: [hdvirtualart.com](http://hdvirtualart.com) | TEL: 0203.974.1567 | EMAIL: [info@hdvirtualart.com](mailto:info@hdvirtualart.com)

Chelsea  
2 Cale Street,  
London SW3 3QU  
+4420 7399 5010  
[lettingschelsea@eu.jll.com](mailto:lettingschelsea@eu.jll.com)

*Urban living, your way.*

[jll.co.uk/residential](http://jll.co.uk/residential)

© 2019 Jones Lang LaSalle IP, Inc. All rights reserved. All information contained herein is from sources deemed reliable; however, no representation or warranty is made to the accuracy thereof.

