

Blackfriars Road, London SE1

Price £850 per week - Furnished







Description

A stunning 1 bedroom apartment in one of London's most iconic residential landmarks, One Blackfriars.

Situated on the 15th floor, this spacious 1 bedroom apartment is furnished to a high standard and comprises large reception area with East facing and river views towards the City skyline and Canary Wharf, fully fitted kitchen with Siemens appliances, bedroom with fitted wardrobes, luxury stone shower room, composite stone flooring and excellent storage space.

The development boasts an extremely high specification, with each apartment coming with tailored iPad and smart home technology, comfort cooling, and sky garden. One Blackfriars also boasts luxury on site amenities with 24 hour concierge, private cinema, sky lounge, gym, pool and spa. One Blackfriars is well situated for the City, located on Blackfriars Bridge, moments from Blackfriars Station.

We understand that cooling / heating is delivered via a communal system for which separate charges apply.

Rent is payable on a monthly basis and you may be required to pay more than a month's rent in advance, depending on your circumstances. You will be required to pay a 1 week holding de

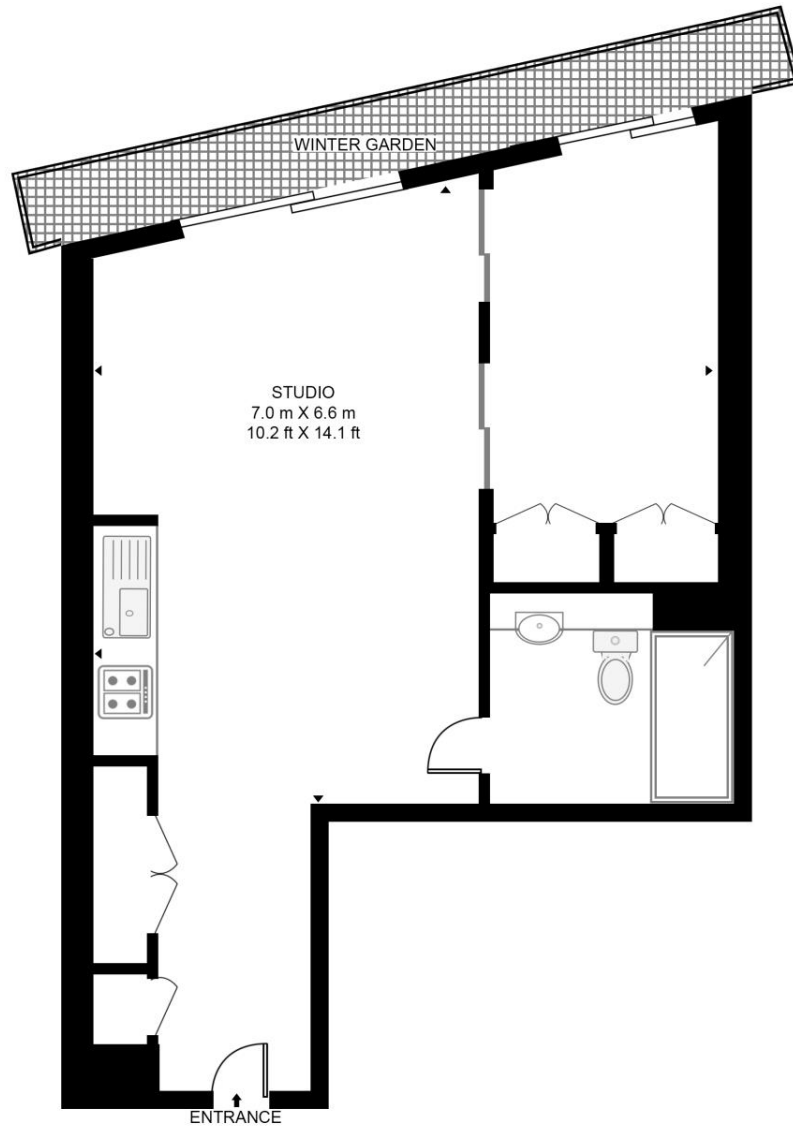
- 1 Bedroom
- 1 Bathroom
- 15th Floor
- East facing views of the City skyline
- 24 hour concierge
- On-site leisure facilities and cinema
- 0.1 miles to Blackfriars Station
- Approx. 593 sq ft (55.1 sq m)
- Furnished
- EPC : B

Floorplan

593 sq ft | 55 sq m

ONE BLACKFRIARS, BLACKFRIARS ROAD

APPROXIMATE GROSS INTERNAL FLOOR AREA 593 SQ.FT (55.1 SQ.M)
(INCLUDING WINTER GARDEN)



FIFTEENTH FLOOR



This floor plan has been defined by the RICS Code of Measurement. This floor plan and all others are for approximate representative purposes only and upon usage is agreed to as such by the client.
WWW: hdvirtualart.com | TEL: 0203.974.1567 | EMAIL: info@hdvirtualart.com

City
25 Walbrook The Walbrook
Building,
London EC4N 8AF
+4420 7337 4000

Urban living, your way.

jll.co.uk/residential

© 2019 Jones Lang LaSalle IP, Inc. All rights reserved. All information contained herein is from sources deemed reliable; however, no representation or warranty is made to the accuracy thereof.

