



Casson Square, London SE1

Price £1,115 per week - Furnished





Description

A 19th floor 2 bedroom apartment in the sought after 8 Casson Square a luxury development moments from Waterloo Station, SE1.

This stunning 2 bedroom apartment is situated on the 19th floor and comprises 2 double bedrooms with large fitted wardrobes to each, living area with a fully fitted open plan kitchen to include Miele and Siemens appliances, a winter garden with stunning views, wood flooring and excellent storage space. The property has a high specification throughout featuring comfort cooling, underfloor heating and smart home technology.

8 Casson Square is in the heart of Southbank and on the doorstep of Waterloo Station (0.2 miles) with access to over ground routes, Bakerloo, Waterloo and City, Jubilee and Northern lines which provide easy access to Central London. The development benefits from luxury amenities which include an on-site gym, swimming pool with spa, exclusive resident's lounge and 24-hour concierge.

As well as paying the rent, you may also be required to make the following permitted payments. If your tenancy does not qualify as an AST, additional fees may apply. Please visit jll.co.uk/fees for details of fees which may be payable when ren

- 2 Bedrooms
- 2 Bathrooms
- 19th floor
- Winter garden
- Underfloor heating
- 24 hour concierge
- On-site leisure facilities including spa, cinema and gym
- 0.2 miles from Waterloo Station
- Approx. 760 sq ft (71 sq m)
- Furnished

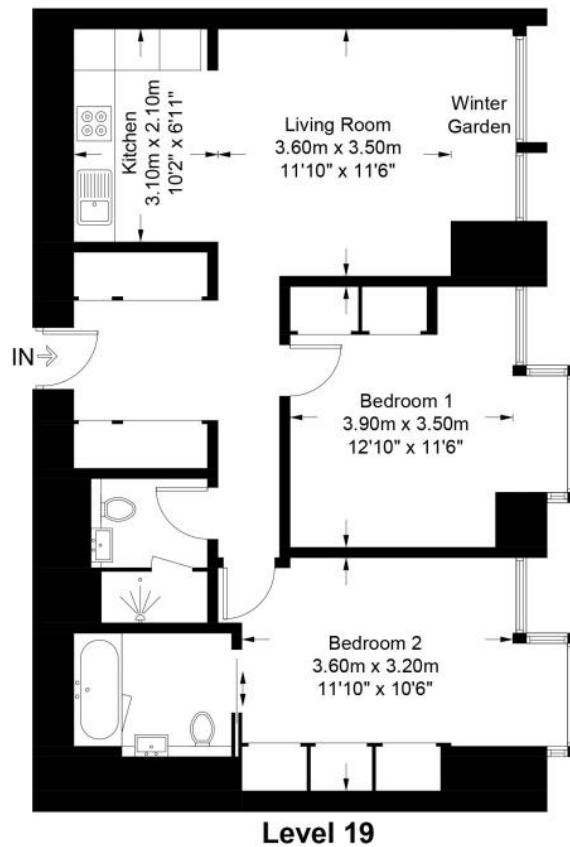
Floorplan

760 sq ft | 71 sq m



Casson Square, SE1

Approximate Gross Internal Area = 760 sq ft / 71 sq m



This plan is for layout guidance only. Not drawn to scale unless stated. Windows and door openings are approximate. Whilst every care is taken in the preparation of this plan, please check all dimensions, shapes and compass bearings before making any decisions reliant upon them. (ID796878)

City
25 Walbrook The Walbrook
Building,
London EC4N 8AF
+4420 7337 4000

Urban living, your way.

jll.co.uk/residential

© 2019 Jones Lang LaSalle IP, Inc. All rights reserved. All information contained herein is from sources deemed reliable; however, no representation or warranty is made to the accuracy thereof.

