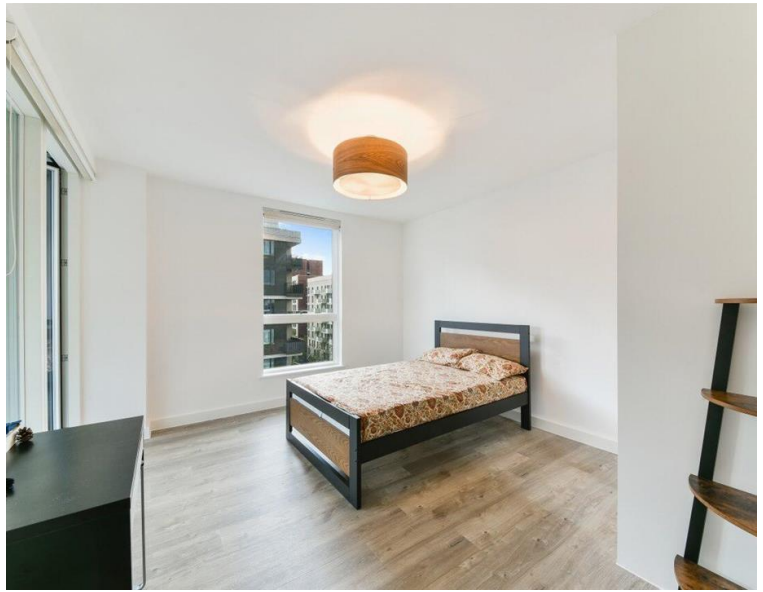


Peloton Avenue Penthouse, E20

Guide price £1,000,000 Leasehold







Description

Rare to the market becomes available this newly built, one-of-a-kind 3 double bedroom and 2 bathroom Penthouse spanning close to 1,800sq. ft in one of Chobham Manor's most desirable buildings with a private terrace and underground parking.

Conveniently located next to the Olympic Park offering lively cafes, restaurants and shops, world-class sporting facilities and having easy access to Westfield Shopping Centre, UAL, Sadler's Wells East (opening in 2024) and the V&A east museum (opening in 2025). Stratford Station and International are also a short walk away with connections from Central and Jubilee lines, Crossrail (Elizabeth Line) and National Rail including: St. Pancras International & Kings Cross, Stratford International DLR station, Canary Wharf and London City Airport.

Situated within the catchment of the "Outstanding" rated Mossborne Riverside Academy the property would be a great home for young families with access to schools, shops and open green spaces. For investors, the property will appeal to a vast array of tenant types with young professionals working in the City, students having access to great nearby institutions such as LSE, UCL, Kings and UAL. Lease: 242 years, SC inc parking charges: approx. £3,774 pa, GR: NA, CT Band: D.

- One-of-a-kind Penthouse Apartment
- 3 Bedrooms (One Master and two double bedrooms), 2 Bathrooms (One en-suite)
- Approx. Gross internal 1,788 sq. ft (166.11 sq. m)
- Private Roof Terrace and Balcony
- Private Underground Parking
- Chobham Manor E20
- Close to Westfield Shopping centre, Olympic Park and East Village for an array of bars, restaurants
- Within a short walk from Stratford station for underground, rail/crossrail, and DLR services
- EPC Rating: B

Floorplan

sq ft | sq m

Hyett Court, Peloton Avenue, E20 1HJ

Approx. Gross Internal Area 1419 Sq Ft - 131.83 Sq M (Excluding Terrace/Balcony)
Approx. Gross Internal Area 1788 Sq Ft - 166.11 Sq M (Including Terrace/Balcony)



Sixth Floor

Floor Area 1419 Sq Ft - 131.83 Sq M

For Illustration Purposes Only - Not To Scale

Stratford
5 Station Street,
London E15 1DA
+4420 3147 1500
salesstratford@eu.jll.com

Urban living, your way.

jll.co.uk/residential

© 2019 Jones Lang LaSalle IP, Inc. All rights reserved. All information contained herein is from sources deemed reliable; however, no representation or warranty is made to the accuracy thereof.

