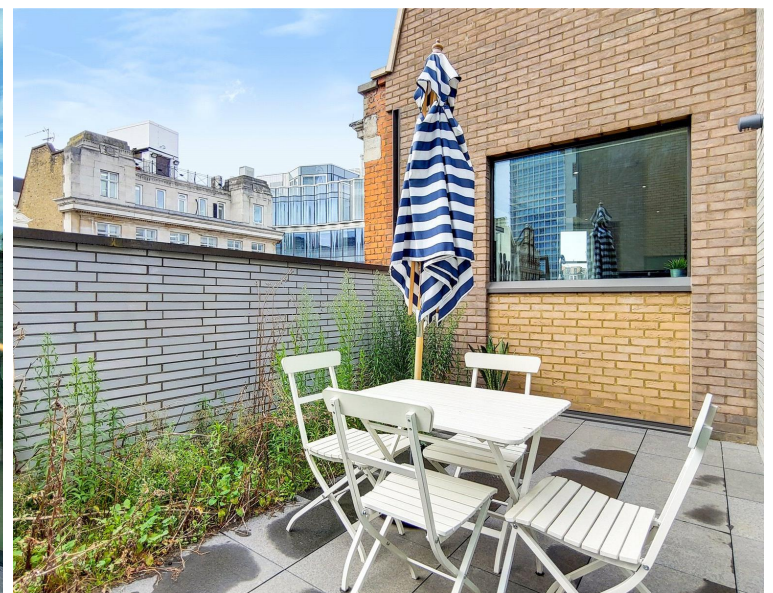
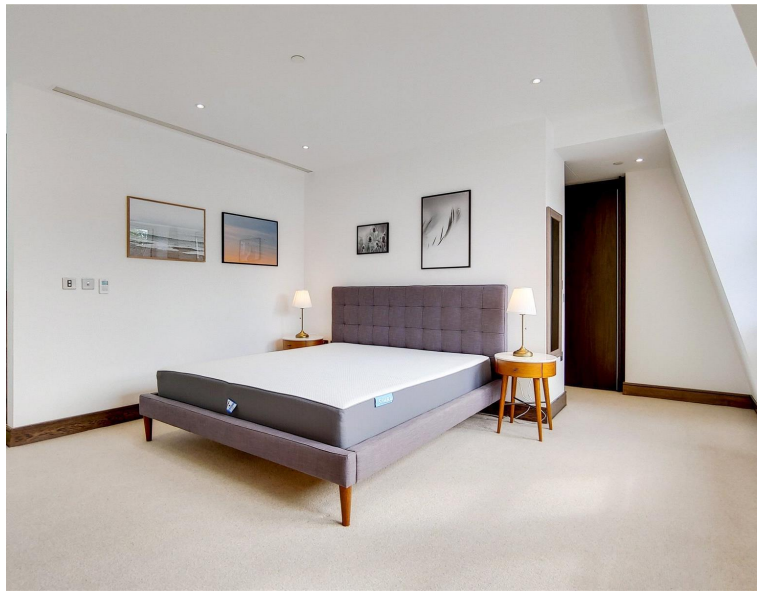


Hanway Street, London W1T

Price £1,200 per week - Furnished







Description

The duplex apartment is situated on the 3rd and 4th floor with lift access. Entering on the 3rd floor, there is a large reception room with a modern fully fitted kitchen, a private terrace accessed off the hallway, a double bedroom with built-in wardrobes and a family shower room. The principal bedroom suite is located on the 4th floor and built-in wardrobes and an en-suite with bath and shower. The apartment is furnished with contemporary furniture and has wooden flooring throughout with carpet in the bedrooms for added comfort.

Hanway Gardens is a secure development with concierge is perfectly located moments from Oxford Street and the many shops, bars and restaurants the area has to offer. There are great transport links close by including Tottenham Court Road with the Elizabeth Line offering easy access to Heathrow Airport. You are also just a short walk to the neighbouring areas of Mayfair, Marylebone, Covent Garden and Soho.

Rent is payable on a monthly basis and you may be required to pay more than a month's rent in advance, depending on your circumstances. You will be required to pay a 1 week holding deposit following a successful offer. Utility bills, council tax, telephone line and broadband are not included in the rent. As w

- Available Now
- Duplex Apartment
- 98sqm / 1,057sqft
- Concierge
- Open-Plan Kitchen
- Furnished
- Wooden Flooring
- Two Double Bedrooms
- Deposit Amount: £7,200
- Council Tax Band: G

Floorplan

1,026 sq ft | 95 sq m

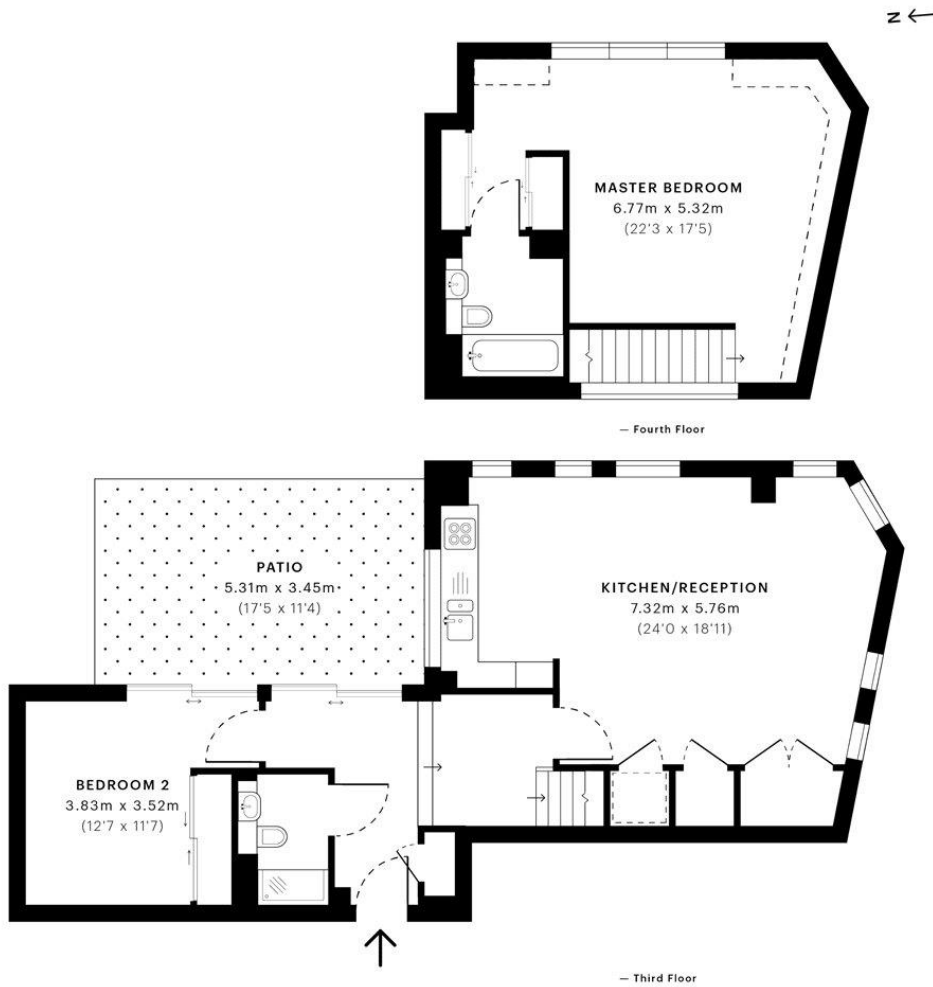


Hanway Street, W1T

CAPTURE DATE
28/08/2019

LASER SCAN POINTS
36,112,663

GROSS INTERNAL AREA
95.3 Sqm / 1026.1 Sqft



GROSS INTERNAL AREA
The footprint of the property
95.3 Sqm / 1026.1 Sqft

NET AREA (INTERNAL)
Excludes walls and external features
90.2 Sqm / 971.0 Sqft

EXTERNAL STRUCTURAL FEATURES
Balconies, terraces, verandas etc.
0.0 Sqm / 0.0 Sqft

RESTRICTED HEAD HEIGHT
Limited use area under 1.5m
4.3 Sqm / 46.6 Sqft



Spec floor plans are produced in accordance with the Royal Institution of Chartered Surveyors' Property Measurement Standards. Plots and gardens are illustrative only and are excluded from all area calculations. Due to rounding, numbers may not add up precisely.



IPMS 3B RESIDENTIAL
95.9 Sqm / 1032.6 Sqft

IPMS 3C RESIDENTIAL
93.2 Sqm / 1003.7 Sqft

SPEC ID
5d6500636abe390a00c80e31

Mayfair and Marylebone
13a St George Street,
London W1S 2FQ
+44 207 399 5550
mayfair@jll.com

Urban living, your way.

jll.co.uk/residential

© 2019 Jones Lang LaSalle IP, Inc. All rights reserved. All information contained herein is from sources deemed reliable; however, no representation or warranty is made to the accuracy thereof.

