

# Principal Place, London EC2A

Price £795 per week - Furnished







## Description

A stunning 1 bedroom apartment in the sought after and iconic Principal Tower, EC2.

This stunning 1 bedroom apartment is situated on the 16th floor and comprises a spacious open plan reception with fully fitted kitchen, private balcony with Eastern views towards Canary Wharf, double bedroom with fitted wardrobes, luxury Porcelain bathroom with under floor heating, comfort cooling and heating and oak herringbone flooring.

Principal Tower boasts an idyllic location, a short walk to Liverpool Street Station (0.3 miles) as well as Shoreditch High Street Station (0.3 miles). The development boasts excellent amenities including a pool with Jacuzzi, spa, gymnasium, residents' lounge/bar, private cinema room and 24 hour concierge.

We understand that cooling / heating is delivered via a communal system for which separate charges apply.

Rent is payable on a monthly basis and you may be required to pay more than a month's rent in advance, depending on your circumstances. You will be required to pay a 1 week holding deposit following a successful offer. Utility bills, council tax, tele

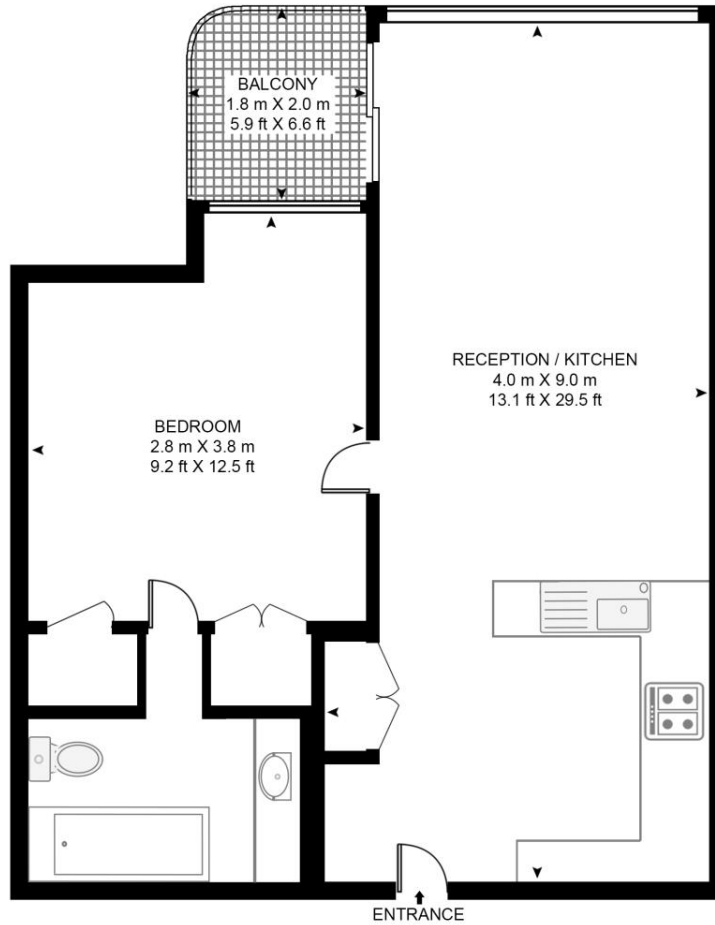
- 1 Bedroom
- 1 Bathroom
- Private balcony
- On-site leisure facilities including pool, spa and cinema
- 24 hour concierge
- 0.3 miles from Liverpool Street Station
- Approx 546 sq ft (50.7 sq m)
- Furnished
- EPC: B
- Council tax: Band E

# Floorplan

546 sq ft | 51 sq m

## PRINCIPAL TOWER, 2 PRINCIPAL PLACE, EC2A 2FE

APPROXIMATE GROSS INTERNAL FLOOR AREA 546 SQ.FT (50.7 SQ.M)



SIXTEENTH FLOOR

**HDVA**

This floor plan has been defined by the RICS Code of Measurement. This floor plan and all others are for approximate representative purposes only and upon usage is agreed to as such by the client.

WWW: [hdvirtualart.com](http://hdvirtualart.com) | TEL: 0203.974.1567 | EMAIL: [info@hdvirtualart.com](mailto:info@hdvirtualart.com)

City  
25 Walbrook The Walbrook  
Building,  
London EC4N 8AF  
+4420 7337 4000

*Urban living, your way.*

[jll.co.uk/residential](http://jll.co.uk/residential)

© 2019 Jones Lang LaSalle IP, Inc. All rights reserved. All information contained herein is from sources deemed reliable; however, no representation or warranty is made to the accuracy thereof.

