



5 New Union Square, SW11

Price £735 per week - Furnished



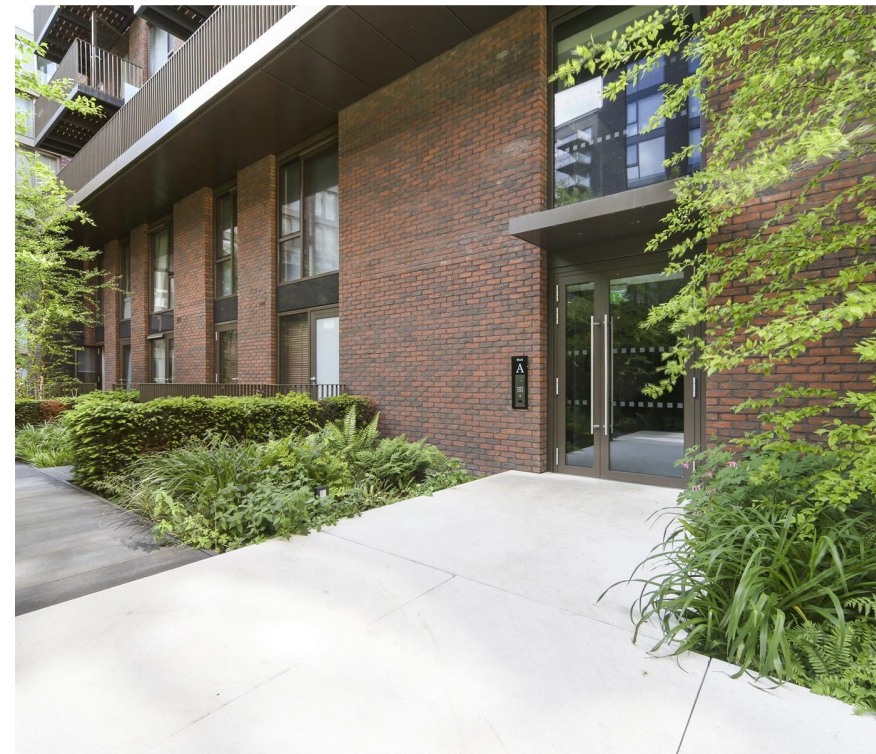


Description

Finished to a high standard this well presented apartment benefits from spacious open plan kitchen reception room with wooden flooring, double bedroom with fitted cupboards, spacious bathroom, balcony and views to The River Thames.

Embassy Gardens offer residents 24 hour concierge, private cinema, business centre and extensive leisure facilities including residents' gymnasium, and swimming pool with steam room and sauna facilities.

Located in the heart of Nine Elms with easy access to the transport links of Vauxhall mainline bus and tube stations.



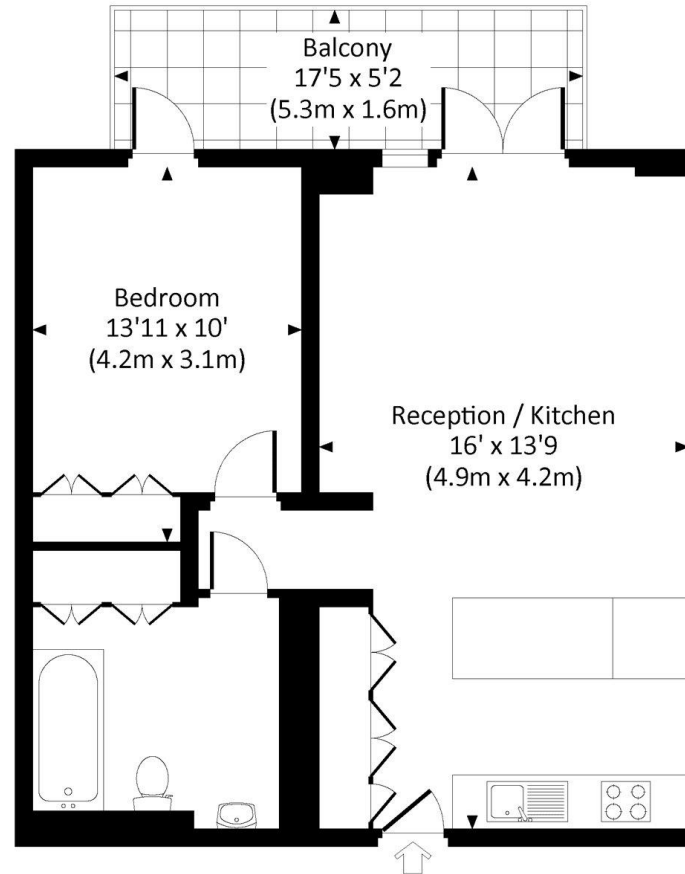
- 1 Bedroom
- 1 Bathroom
- Embassy Gardens, Vauxhall
- Balcony with river views
- Luxury facilities
- Concierge
- 600 sq ft (55 sq m)
- Furnished
- EPC: B

Floorplan

sq ft | sq m

AMBASSADOR BUILDING, EMBASSY GARDENS, SW8

Approx. gross internal area
600 Sq Ft. / 55.7 Sq M.



SECOND FLOOR

All measurements have been made in accordance with RICS Code of Measuring Practice which are approximate only and only for illustrative purposes. For the avoidance of doubt, Dowling Jones Design shall not be liable for any reliance on these measurements. © 2015 www.dowlingjones.com 020 7610 9933

Nine Elms
4 Riverlight Quay,
London SW11 8DG
+4420 3147 1333
lettingsnineelms@eu.jll.com

Urban living, your way.

jll.co.uk/residential

© 2019 Jones Lang LaSalle IP, Inc. All rights reserved. All information contained herein is from sources deemed reliable; however, no representation or warranty is made to the accuracy thereof.

