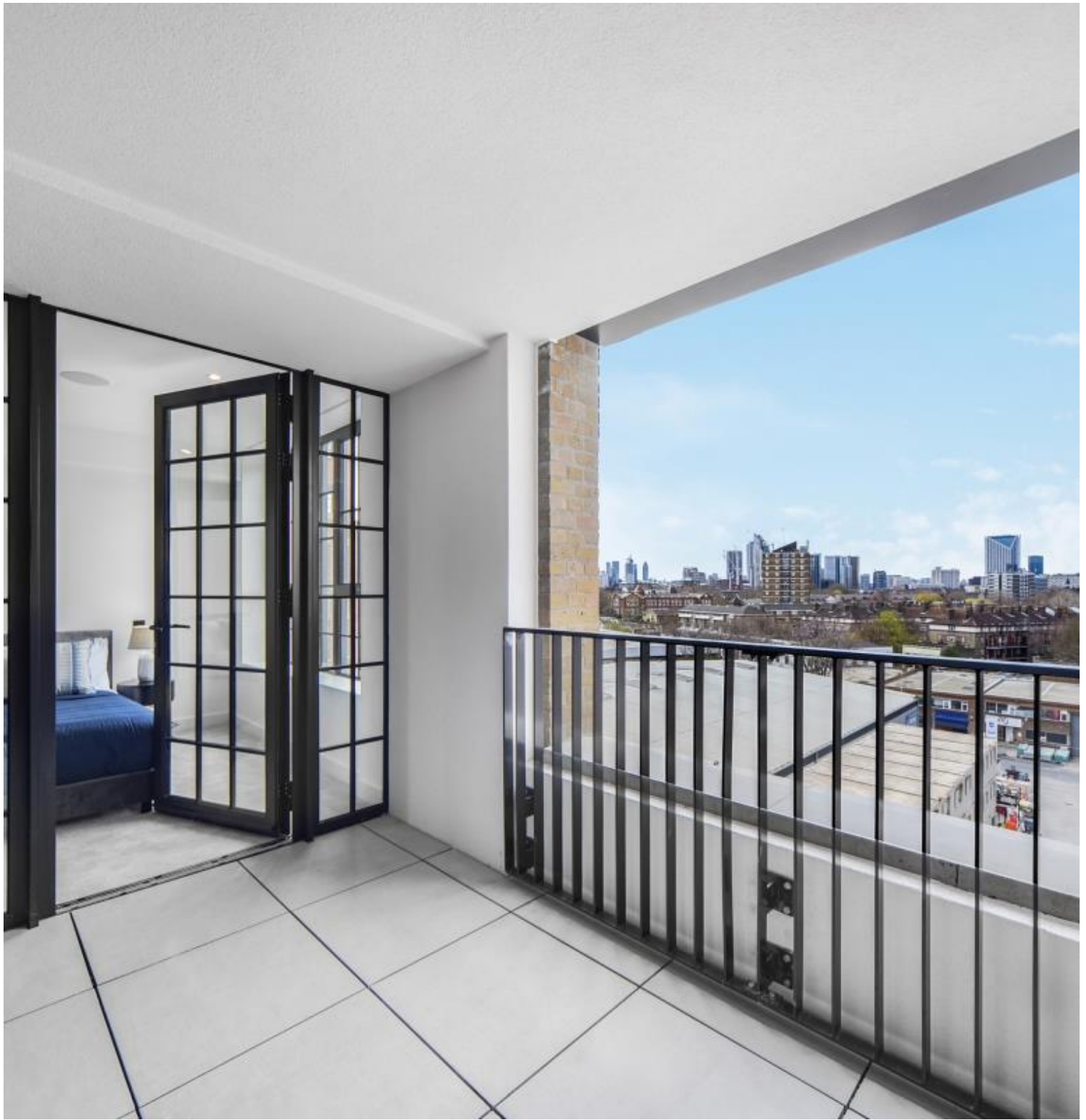




5 New Tannery Way, London SE1

Price £765 per week - Furnished







Description

A fully furnished 2 bedroom apartment in The Pickle Factory, part of London Square Bermondsey development in the vibrant and popular Bermondsey / London Bridge area SE1.

Situated on the 5th floor, this spacious 2 bedroom apartment is offered fully furnished and comprises a large open plan reception area and fitted kitchen with Siemens appliances, large balcony with views over the London Skyline, comprises 2 double bedrooms with fitted wardrobes and en-suite to master, 2 luxury bathrooms, wood flooring, built-in surround sound and excellent storage space.

The development boasts fantastic amenities which include 12 hour concierge and resident's gym (once the gym is completed). The Pickle Factory is situated in the vibrant and trendy hub of Bermondsey / London Bridge, with Bermondsey Station and London Bridge Station within walking distance.

Rent is payable on a monthly basis and you may be required to pay more than a month's rent in advance, depending on your circumstances. You will be required to pay a 1 week holding deposit following a successful offer. Utility bills, council tax, telephone line and broadband are not included in the rent. As well as paying the rent, you may also be required to make som

- 2 Bedrooms
- 2 Bathrooms
- 5th Floor
- Large Balcony
- Open plan kitchen
- On-site concierge
- On-site leisure facilities
- 0.7 miles from Bermondsey Station
- Approx. 742 sq ft (68.9 sq m)
- Furnished

Floorplan

742 sq ft | 69 sq m

City
25 Walbrook The Walbrook
Building,
London EC4N 8AF
+4420 7337 4000

Urban living, your way.

jll.co.uk/residential

© 2019 Jones Lang LaSalle IP, Inc. All rights reserved. All information contained herein is from sources deemed reliable; however, no representation or warranty is made to the accuracy thereof.

