



Sloane Gardens, London SW1W

Price £2,250 per week - Unfurnished







Description

An elegant three bedroom, two bathroom flat on a quiet sought after tree lined street minutes from Sloane Square tube station and fashionable Kings Road. The property is in immaculate condition having recently been refurbished throughout to a high standard and features new appliances, full air conditioning & underfloor heating.

Sloane Gardens is situated just south of Sloane Square between Holbein Place and Lower Sloane Street. The property is well placed for the extensive facilities of Chelsea and Knightsbridge and it is a short walk from Sloane Square underground station.

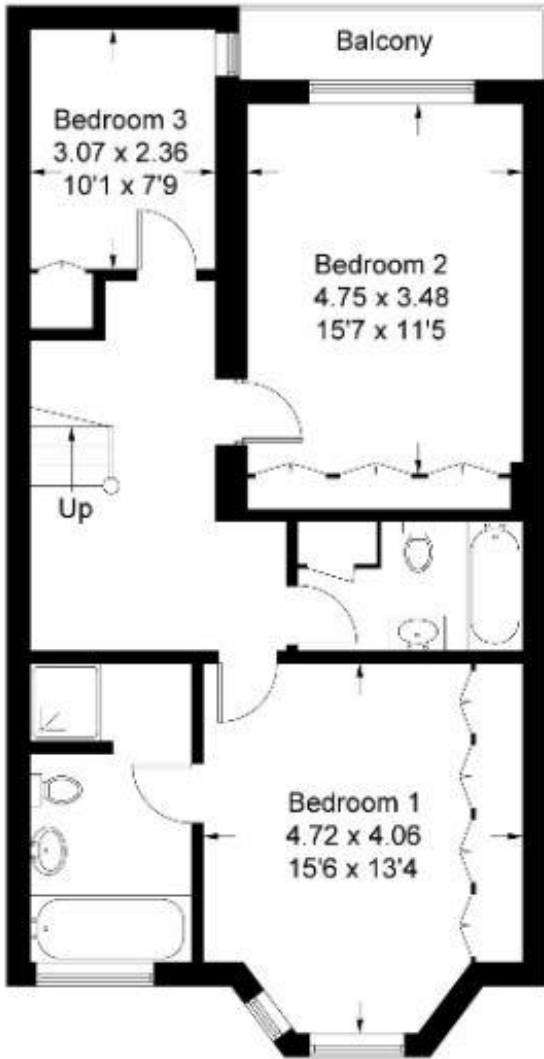
Rent is payable on a monthly basis and you may be required to pay more than a month's rent in advance, depending on your circumstances. You will be required to pay a 1 week holding deposit following a successful offer. Utility bills, council tax, telephone line and broadband are not included in the rent. As well as paying the rent, you may also be required to make some additional permitted payments. If your tenancy does not qualify as an AST, additional fees may apply. Please visit jll.co.uk/fees for details of fees which may be payable when renting a property.

- Master bedroom with en suite shower room
- 2 Further bedrooms
- 1 Further bathroom
- Large reception room
- Modern kitchen
- Patio
- Air conditioning
- Underfloor heating
- Unfurnished
- Approx. 1319 sq ft (122 sq m)

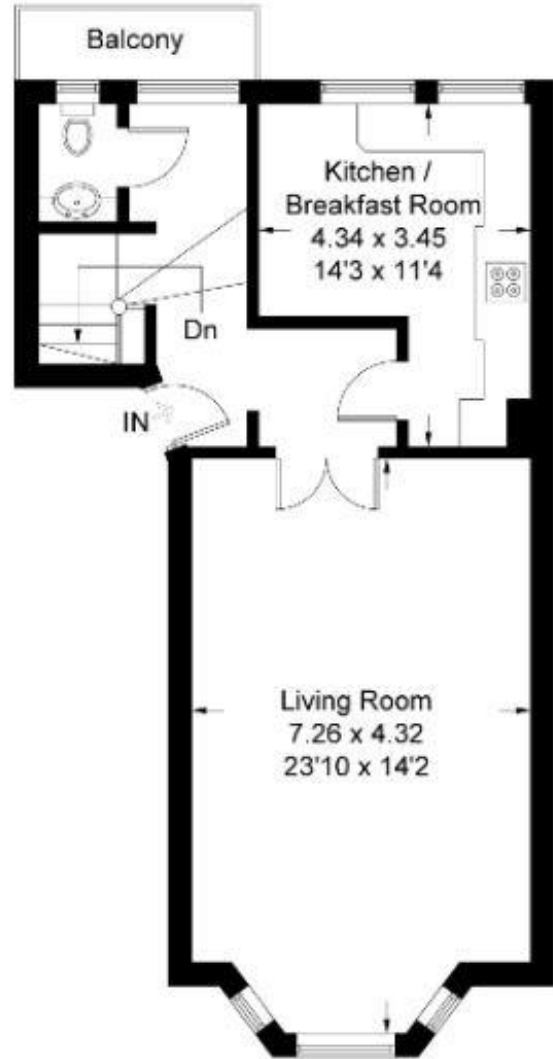
Floorplan

1,319 sq ft | 123 sq m

Approximate Gross Internal Area = 122.0 sq m / 1319 sq ft



Lower Ground Floor



Ground Floor

Chelsea
2 Cale Street,
London SW3 3QU
+4420 7399 5010
lettingschelsea@eu.jll.com

Urban living, your way.

jll.co.uk/residential

© 2019 Jones Lang LaSalle IP, Inc. All rights reserved. All information contained herein is from sources deemed reliable; however, no representation or warranty is made to the accuracy thereof.

