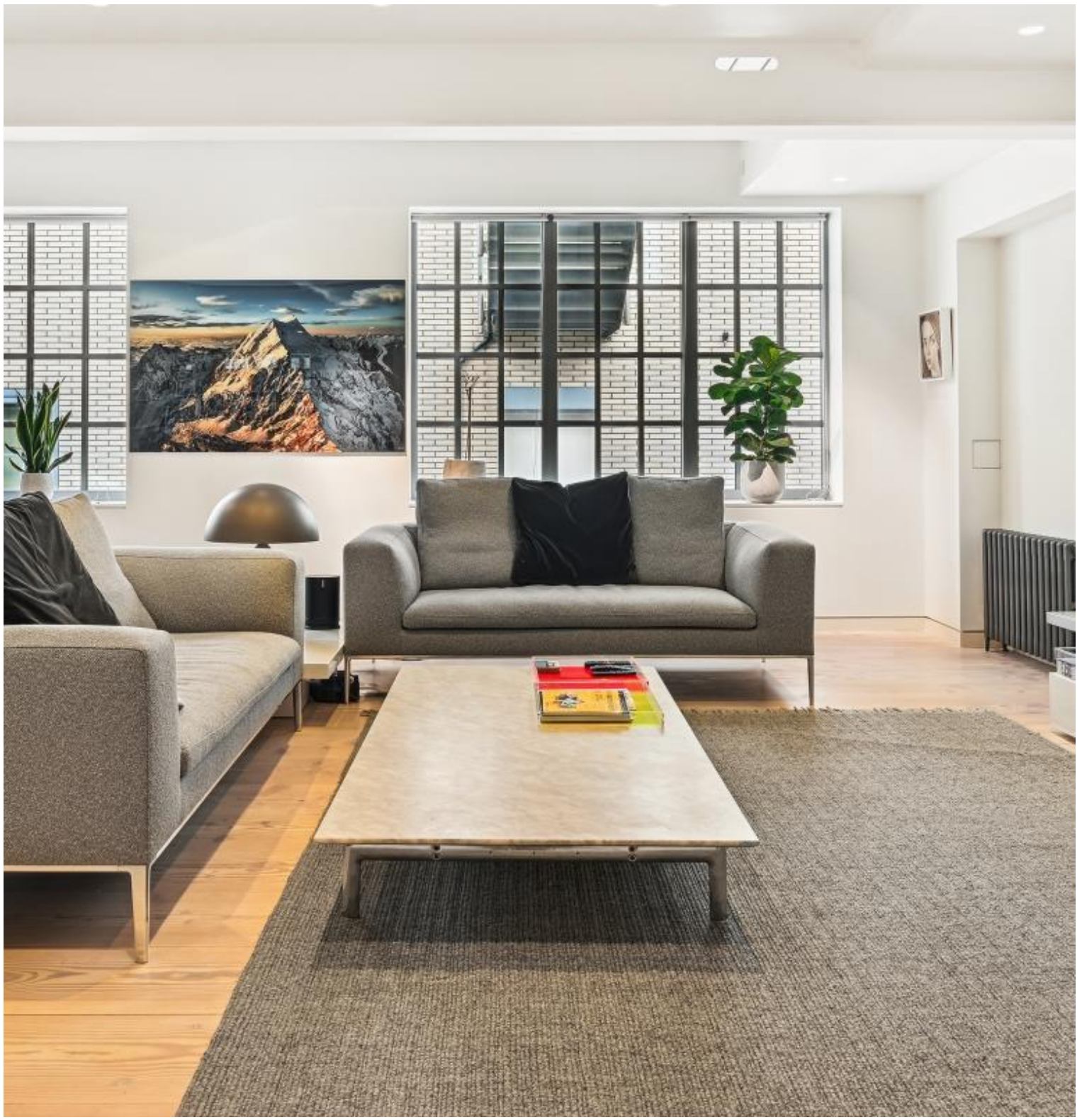
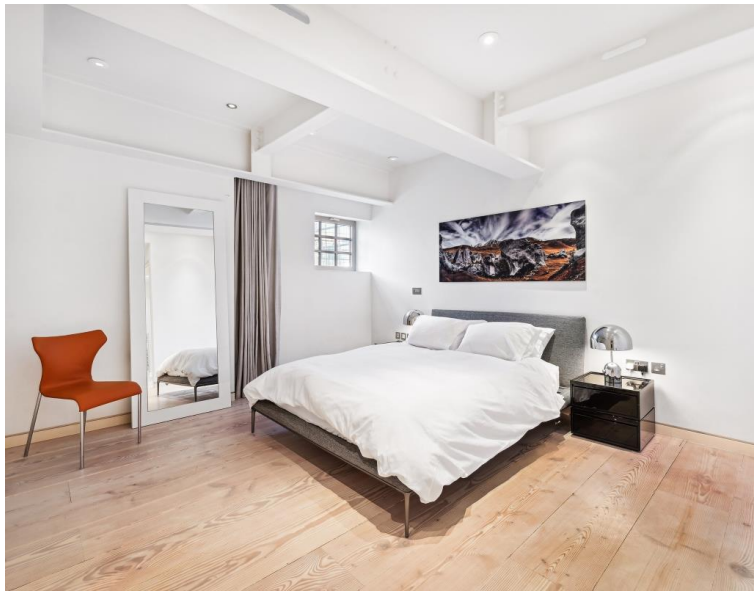


Marshall Street, London W1F

Asking price £3,950,000 Leasehold







Description

The Regent Lofts and Penthouses are located just off Regent Street at the convergence of Mayfair and Soho in London's West End. It offers a stunning collection of unique living spaces rarely found in central London. Placed around the buildings' structures are 37 individual and unique spaces. This apartment is accessed via sky-terraces, adorned by hand-thrown, individually glazed pots, each carefully planted with shrubs and herbs that will thrive in the buildings' micro-climate to create a unique English garden in the sky that resembles the garden squares of central London.

Set on the fourth floor, this apartment offers over 2,200 sqft of contemporary space. The loft-style apartment boasts a large, open-plan living space which is ideal for entertaining. This spacious area has been designed with sleek, neutral interiors, beautiful wooden flooring throughout, beamed ceilings and large crittall windows which flood the area in natural light. The striking open-plan kitchen has been designed with high-specification fittings including, contemporary, white cupboards, integrated appliances and a stylish island with breakfast bar. This three bedroom, three bathroom flat offers a vast amount of storage space. The building itself allows for access to the communal gardens and benefits from 24 hour concierge.

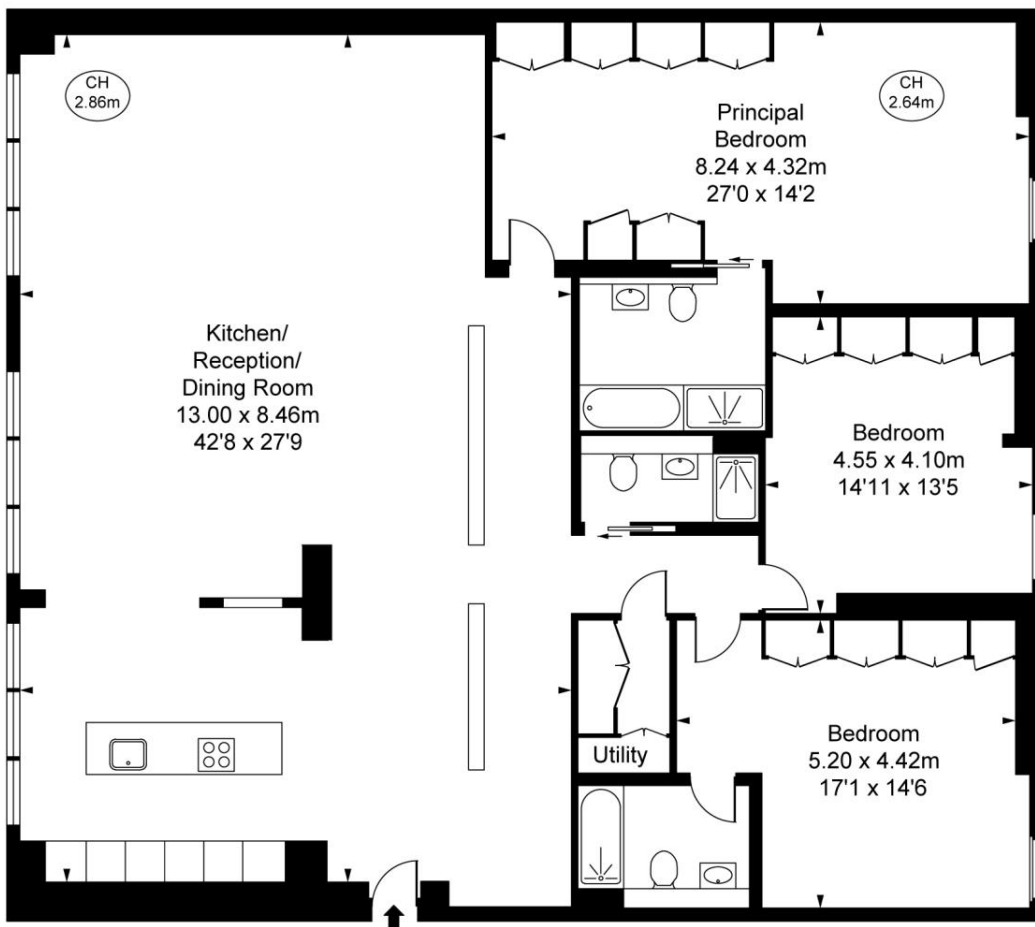
- 3 Double bedrooms
- 3 Bathrooms
- Open plan kitchen
- Fourth floor
- Lift
- 24 Hour concierge
- Approx. 2206 sq ft (205 sq m)
- EPC: B
- Service Charge: £20,016.87
- Ground Rent: £500

Floorplan

2,206 sq ft | 205 sq m

The Regent Lofts, Marshall Street, W1F Approximate Gross Internal Area 204.98 sq m / 2,206 sq ft

(CH = Ceiling Heights)



Fourth Floor

This plan is not to scale. It is for guidance and not for valuation purposes.
All measurements and areas are approximate only, and have been prepared in accordance with the current edition of the RICS Code of Measuring Practice.
© Fulham Performance

Mayfair and Marylebone
13a St George Street,
London W1S 2FQ
+44 207 399 5550

Urban living, your way.

jll.co.uk/residential

© 2019 Jones Lang LaSalle IP, Inc. All rights reserved. All information contained herein is from sources deemed reliable; however, no representation or warranty is made to the accuracy thereof.

