

Commercial Street, London E1

Price £795 per week - Furnished







Description

A luxury 2 bedroom apartment in the sought after Cityscape development.

This luxury 2 bedroom apartment is situated on the 9th floor and boasts spacious reception with views of Canary Wharf, 2 double bedrooms with fitted wardrobes and en-suite to master bedroom, fully fitted open plan kitchen, generous sized balcony, 2 contemporary bathrooms with porcelain and glass tiling and wooden flooring. The apartment benefits from floor to ceiling windows maximising natural light and views.

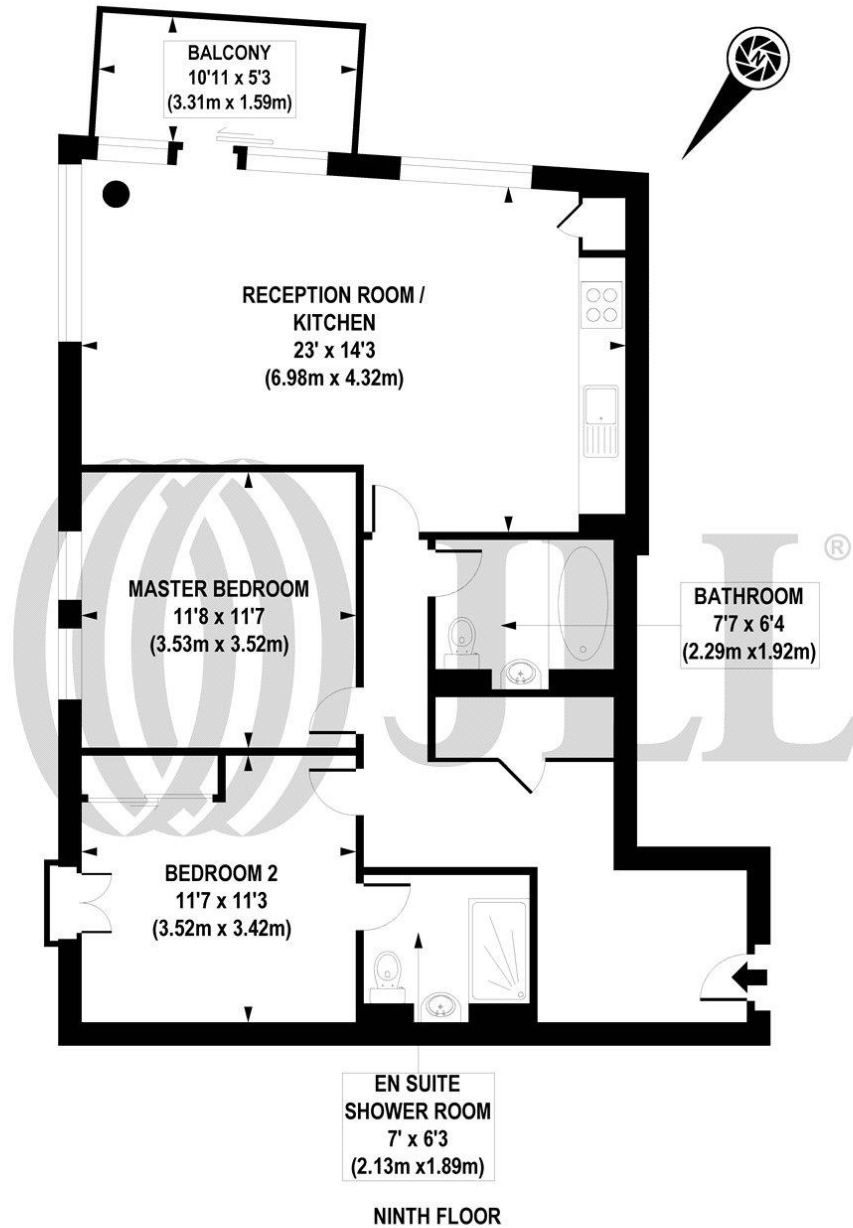
The development is situated next Aldgate East Station and a short walk from the City of London. Located in Zone 1, the development is within easy walking distance to Aldgate and Liverpool Street Stations. Residents also benefit from 24 hour concierge service and on site gymnasium.

Rent is payable on a monthly basis and you may be required to pay more than a month's rent in advance, depending on your circumstances. You will be required to pay a 1 week holding deposit following a successful offer. Utility bills, council tax, telephone line and broadband are not included in the rent. As well as paying the rent, you may also be required to make some additional permitted payments. If your tenancy does not q

- 2 Bedrooms
- 2 Bathrooms
- Balcony
- 24 hour concierge
- On site gym
- 0.2 miles from Aldgate Station
- Approx. 840 sq ft (78.1 sq m)
- Furnished
- EPC: B
- Council tax: Band F

Floorplan

840 sq ft | 78 sq m



APPROX. GROSS INTERNAL FLOOR AREA 840 sq. ft / 78.01 sq. m

Floorplan is for illustrative purposes only and is not to scale. Every attempt has been made to ensure the accuracy of the floorplan shown, however all measurements, fixtures, fittings and data shown are an approximate interpretation for illustrative purposes only. Liability for errors, omissions or mis-statement through negligence or otherwise is hereby excluded.

CP CREATIVE
PROPERTY MARKETING

City
25 Walbrook The Walbrook
Building,
London EC4N 8AF
+4420 7337 4000

Urban living, your way.

jll.co.uk/residential

© 2019 Jones Lang LaSalle IP, Inc. All rights reserved. All information contained herein is from sources deemed reliable; however, no representation or warranty is made to the accuracy thereof.

