



Commercial Street, London E1

Price £795 per week - Furnished







Description

A luxury 2 bedroom apartment on the sub penthouse level of Kensington Apartments, E1.

This luxury 2 bedroom apartment has been furnished to a high standard and is situated on the 10th floor. The property boasts spacious reception with views over the landscaped courtyard, 2 double bedrooms with fitted wardrobes and en-suite to master bedroom, fully fitted open plan kitchen, generous sized balcony, 2 contemporary bathrooms with porcelain and glass tiling and wooden flooring. The apartment benefits from floor to ceiling windows maximising natural light and views.

The development is situated next Aldgate East Station and a short walk from the City of London. Located in Zone 1, the development is close to Aldgate (0.1 mile) and Liverpool Street (0.6 miles) stations. Residents also benefit from 24 hour concierge service and on site gymnasium.

Rent is payable on a monthly basis and you may be required to pay more than a month's rent in advance, depending on your circumstances. You will be required to pay a 1 week holding deposit following a successful offer. Utility bills, council tax, telephone line and broadband are not included in the rent. As well as paying the rent, you may also be required to make som

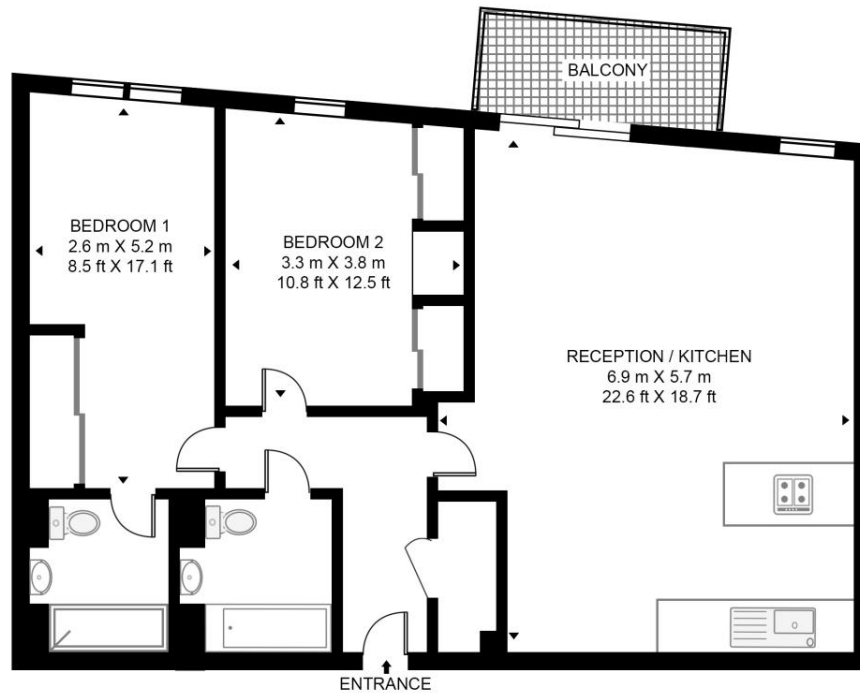
- 2 Bedrooms
- 2 Bathrooms
- 10th floor
- Views over the landscaped courtyard
- Floor to ceiling windows
- 24-hour concierge
- Onsite leisure facilities
- Approx 859 sq ft (79.8 sqm)
- Furnished
- EPC: B

Floorplan

859 sq ft | 80 sq m

KENSINGTON APARTMENTS

APPROXIMATE GROSS INTERNAL FLOOR AREA 859 SQ.FT (79.8 SQ.M)



TENTH FLOOR



This floor plan has been defined by the RICS Code of Measurement. This floor plan and all others are for approximate representative purposes only and upon usage is agreed to as such by the client.
WWW: hdvirtualart.com | TEL: 0203.974.1567 | EMAIL: info@hdvirtualart.com

City
25 Walbrook The Walbrook
Building,
London EC4N 8AF
+4420 7337 4000

Urban living, your way.

jll.co.uk/residential

© 2019 Jones Lang LaSalle IP, Inc. All rights reserved. All information contained herein is from sources deemed reliable; however, no representation or warranty is made to the accuracy thereof.

