



Queensway, W2

Guide price £695,000 Leasehold





Description

A delightful fourth floor apartment, presented in excellent condition, having been recently refurbished, located on Queensway.

There are two spacious double bedrooms, a living room and separate kitchen. With its contemporary design and prime location, this property offers the perfect haven for comfortable city living.

Well-connected by public transportation, Queensway Underground Station (Central Line) and Bayswater Underground Station (Circle and District Lines) are within walking distance, providing easy access in and out of central London.

Queensway is situated between the bustling districts of Bayswater and Notting Hill. It runs parallel to Bayswater Road and is conveniently located near Hyde Park, one of London's most famous parks, offering various recreational activities, also a venue for various special events throughout the year, including concerts, festivals, and cultural celebrations.

- 2 double bedrooms
- Separate kitchen
- Wooden flooring
- 0.2 miles to Hyde Park
- Bayswater station at the doorstep
- 0.2 miles to Queensway station
- 728 sq ft / 68 sq m
- EPC TBC

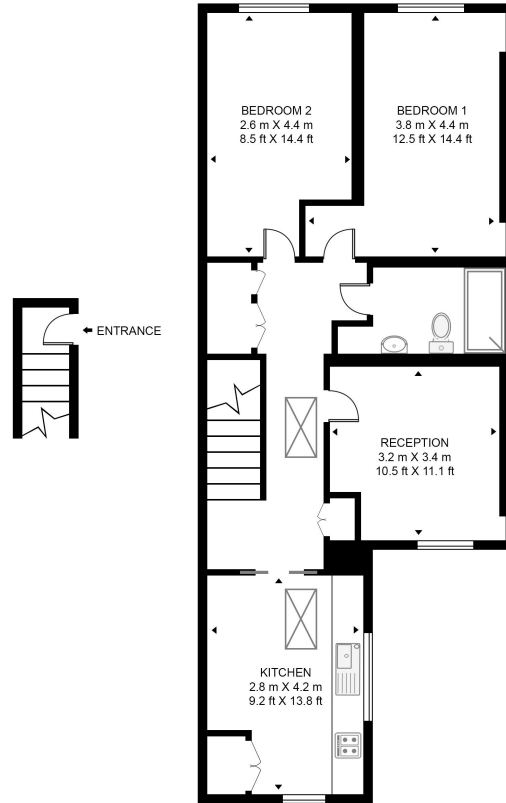


Floorplan

728 sq ft | 68 sq m

QUEENSWAY

APPROXIMATE GROSS INTERNAL FLOOR AREA 728 SQ.FT (67.6 SQ.M)



THIRD FLOOR

FOURTH FLOOR



This floor plan has been defined by the RICS Code of Measurement. This floor plan and all others are for approximate representative purposes only and upon usage is agreed to as such by the client.
WWW: hdvirtualart.com | TEL: 0203.974.1567 | EMAIL: info@hdvirtualart.com

Kensington
387 Kensington High Street,
London W14 8QA
+4420 7087 5696
saleskensington@eu.jll.com

Urban living, your way.

jll.co.uk/residential

© 2019 Jones Lang LaSalle IP, Inc. All rights reserved. All information contained herein is from sources deemed reliable; however, no representation or warranty is made to the accuracy thereof.

