



Avantgarde Place, London E1

Price £865 per week - Furnished







Description

A rarely available 2 bedroom apartment in Avantgarde Tower.

This stunning 2 bedroom apartment is situated on the 15th floor and offers 2 double bedrooms with fitted wardrobes, two contemporary bathrooms, reception with floor to ceiling windows, balcony, stunning South Eastern views of the City Skyline and Canary Wharf, fully fitted kitchen and wood flooring.

The development has a high specification with comfort cooling, on site leisure facilities and 24 hour concierge. Based in the stylish hub of Shoreditch, the development is located in Zone 1, with local transport links such as Shoreditch High Street, Old Street, Hoxton and Aldgate.

We understand that cooling / heating is delivered via a communal system for which separate charges apply.

Rent is payable on a monthly basis and you may be required to pay more than a month's rent in advance, depending on your circumstances. You will be required to pay a 1 week holding deposit following a successful offer. Utility bills, council tax, telephone line and broadband are not included in the rent. As well as paying the rent, you may also be required to make som

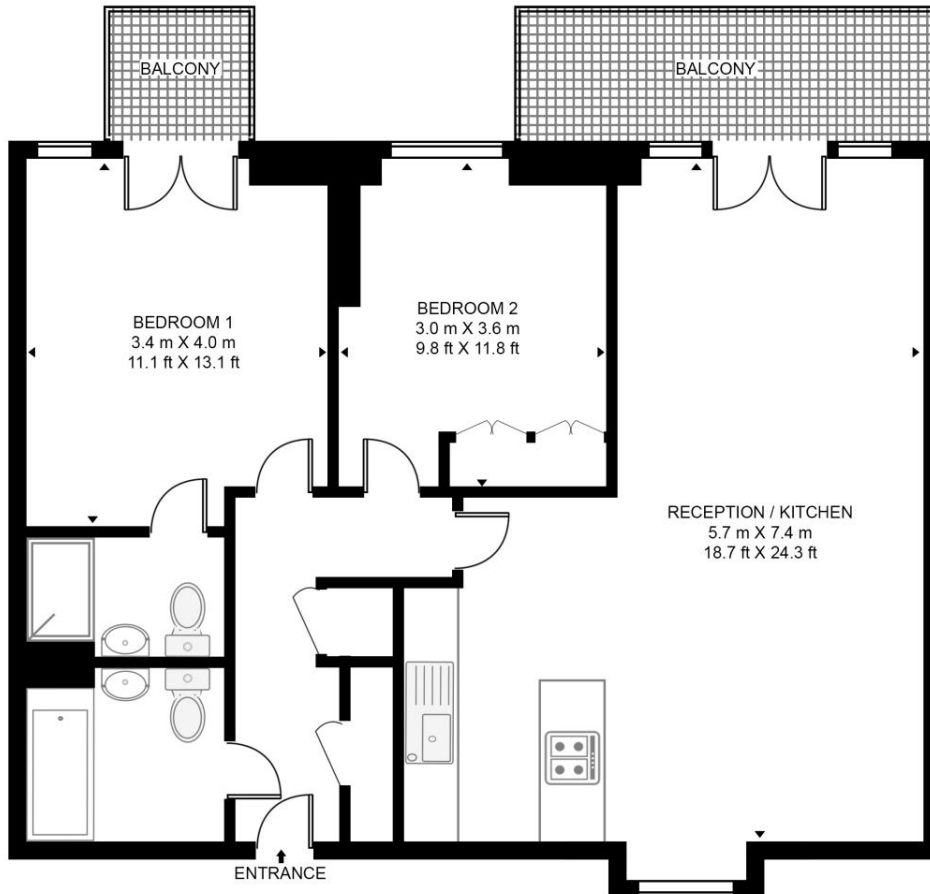
- 2 Bedrooms
- 2 Bathrooms
- Balcony
- Wood flooring
- 24 hour concierge
- 0.1 mile from Shoreditch station
- Approx. 803 sq ft (74.6 sq ft)
- Furnished
- EPC: B
- Council tax: Band E

Floorplan

803 sq ft | 75 sq m

AVANTGARDE TOWER

APPROXIMATE GROSS INTERNAL FLOOR AREA 803 SQ.FT (74.6 SQ.M)



FIFTEENTH FLOOR



This floor plan has been defined by the RICS Code of Measurement. This floor plan and all others are for approximate representative purposes only and upon usage is agreed to as such by the client.

WWW: hdvirtualart.com | TEL: 0203.974.1567 | EMAIL: info@hdvirtualart.com

City
25 Walbrook The Walbrook
Building,
London EC4N 8AF
+4420 7337 4000

Urban living, your way.

jll.co.uk/residential

© 2019 Jones Lang LaSalle IP, Inc. All rights reserved. All information contained herein is from sources deemed reliable; however, no representation or warranty is made to the accuracy thereof.

