



## Avantgarde Place, London E1

Price £770 per week - Furnished







## Description

A stunning two bedroom apartment in the luxury Avant-Garde development, located in the heart of Shoreditch.

This luxury two bedroom apartment is situated on the 8th floor and offers two double bedrooms with fitted wardrobes, two contemporary Roca bathrooms with en-suite to master bedroom, balcony with stunning views of the City Skyline, plus additional 488 sq ft private terrace with views towards Canary Wharf, fully fitted kitchen with Siemens appliances and wood flooring.

This luxury development has a high specification to include comfort cooling, resident's lounge, on site leisure facilities and 24 hour concierge. Based in the stylish hub of Shoreditch, the development is located in Zone 1 and approximately 0.1 mile from Shoreditch High Street station.

We understand that cooling / heating is delivered via a communal system for which separate charges apply.

Rent is payable on a monthly basis and you may be required to pay more than a month's rent in advance, depending on your circumstances. You will be required to pay a 1 week holding deposit following a successful offer. Utility bills, council tax, tele

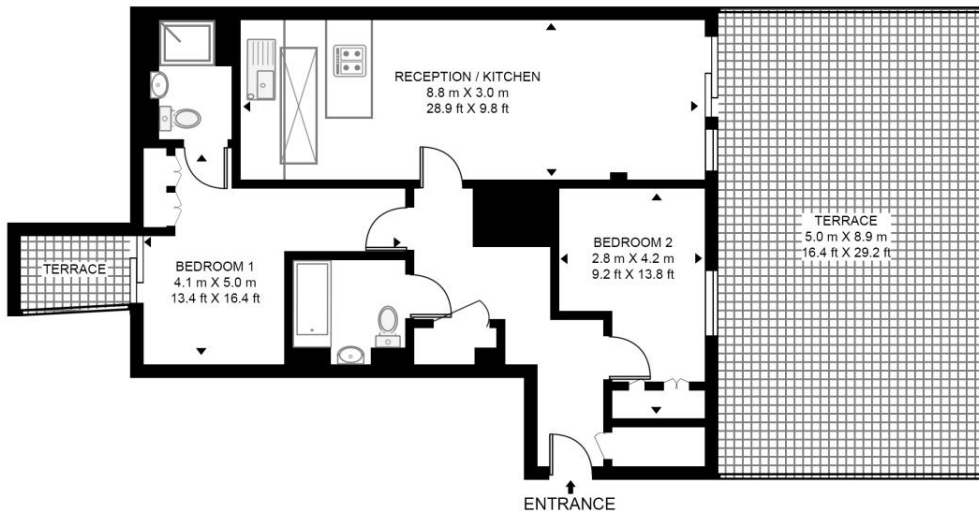
- 2 Bedrooms
- 2 Bathrooms
- 8th floor
- Balcony
- On site leisure facilities
- 24 hour concierge and residents' lounge
- 0.1 mile from Shoreditch Station
- Approx. 808 sq ft (75.1 sq m)
- Furnished
- EPC: B

# Floorplan

808 sq ft | 75 sq m

## COURTYARD APARTMENTS

APPROXIMATE GROSS INTERNAL FLOOR AREA 808 SQ.FT (75.1 SQ.M)



EIGHTH FLOOR



This floor plan has been defined by the RICS Code of Measurement. This floor plan and all others are for approximate representative purposes only and upon usage is agreed to as such by the client.  
WWW: [hdvirtualart.com](http://hdvirtualart.com) | TEL: 0203.974.1567 | EMAIL: [info@hdvirtualart.com](mailto:info@hdvirtualart.com)

City  
25 Walbrook The Walbrook  
Building,  
London EC4N 8AF  
+4420 7337 4000

*Urban living, your way.*

[jll.co.uk/residential](http://jll.co.uk/residential)

© 2019 Jones Lang LaSalle IP, Inc. All rights reserved. All information contained herein is from sources deemed reliable; however, no representation or warranty is made to the accuracy thereof.

